

J E T

4224

WOOD LATHE

1791254M

230/50/1

**PARTS LIST
ERSATZTEILLISTE
LISTE DE PIECES**

WMH Tool Group AG

Bahnstrasse 24, CH – 8603 Schwerzenbach

www.wmhtoolgroup.ch; info@wmhtoolgroup.ch

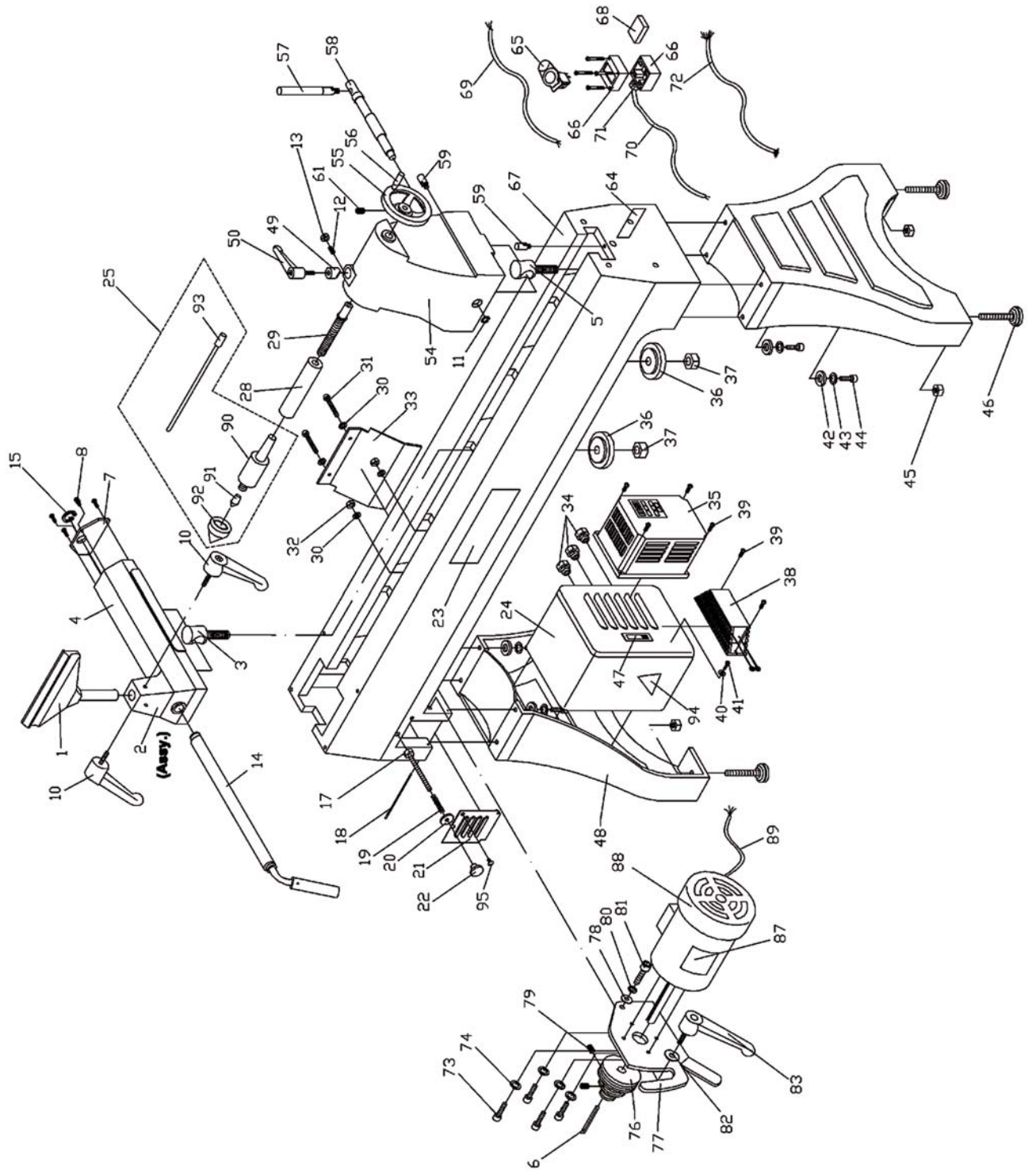
Tel +41 (0) 1 806 47 48

Fax +41 (0) 1 806 47 58

P-1791254M 01/04

Stand and Bed Assembly





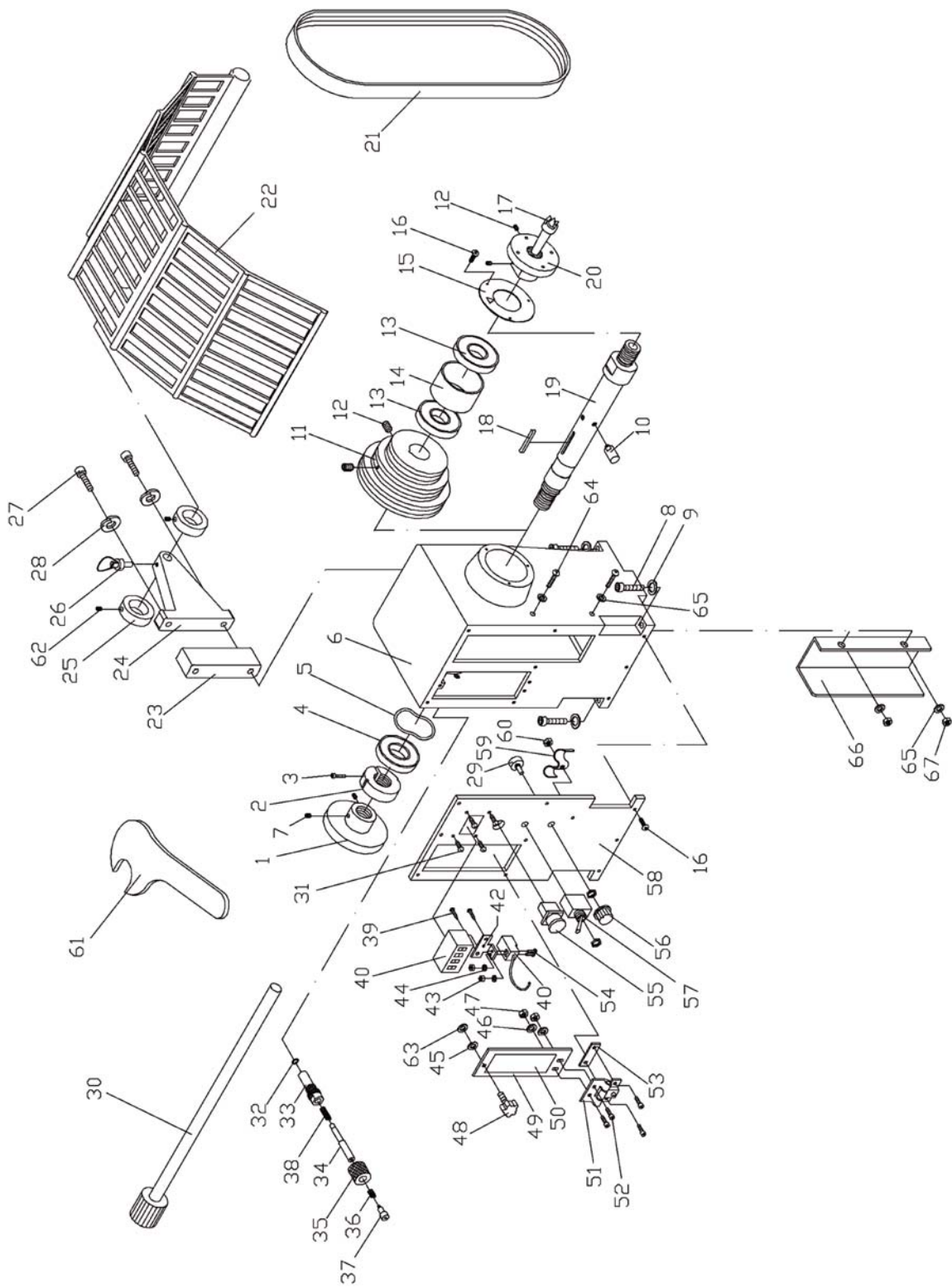
Parts List for the 4224 Woodworking Lathe

Stand and Bed Assembly

Index No.	Part No.	Description	Size	Qty.
1	6294742E	Tool Support	14"	1
2	6294753E	Tool Support Assembly (Items 3 thru 10, 14, 15, 36, 37)		1
3	6295851	Tool Support Clamp Bolt		1
4	6295917E	Base Tool Support		1
5	4224-105	Tailstock Clamp Bolt		1
6	6294761	Key	6x6x45	1
7	6295702E	End Cover		1
8	6295703	Socket Cap Screw	#10-24x5/8"	4
10	6294763	Tool Support Handle		2
11	6295919	C-Ring		1
12	6295922	Set Screw (special)	1/4"-20x1"	1
13	TS-0561011	Hex Nut	1/4-20	1
14	6295709A	Tool Support Rod		1
15	6295710	C-Ring	S-25	1
17	6295712	Hex Head Bolt	5/16"-18x3"	1
18	JML-24	Pin		1
19	JML-26	Spring		1
20	JML-25	Washer	5/16"	1
21	JML-22	Motor Pulley Door		1
22	6295717	Knob		1
23	JWL1442-219	Jet Logo		1
24	6295719E	Inverter Box		1
25	6295902	Live Center Assembly		1
28	6295723E	Tailstock Spindle		1
29	6295724	Lead Screw		1
30	6295725	Washer	M5	4
31	6295726	Socket Head Cap Screw	M5x30	2
32	6295727	Hex Nut	M5	2
33	6295728	Chip Bracket		1
34	JWL1642-196E	Strain Relief	PG13.5	3
35	6295730	Inverter		1
36	6294770	Clamp		2
37	TS-0650081	Lock Nut	3/4"-10	2
38	6295733	Braking Resistor		1
39	6295734	Round Head Screw	#10-24x5/16"	6
40	6295735	Washer	#10	6
41	6295736	Socket Cap Screw	#10-24x1/2"	4
42	6295737	Washer	3/8"	8
43	6295738	Lock Washer	3/8"	8
44	6295792	Socket Cap Screw	3/8"-16x1-1/4"	8
45	6295740	Hex Nut	3/8"-16	4
46	6295741	Leveler		4
47	6295742	Door Lock		1
48	6295743E	Stand		2
49	6295892	Quill Lock Sleeve		1
50	6295893	Tailstock Quill Handle		1
54	6295749E	Tailstock		1
55	6295918	Handwheel		1
56	6295751	Handle		1

Index No.	Part No.	Description	Size	Qty.
57	6295848	Tailstock Handle		1
58	6295849	Tailstock Clamping Shaft		1
59	6295754	Tailstock Stud		2
61	6715013	Set Screw	5/16"-18x3/8"	1
64	6295759E	I.D Label		1
	6294733E	Remote ON/OFF Switch Assembly (Items 65, 66, 68, 70,71)		1
65	6295760	ON/ OFF Switch		1
66	6295761	Switch Box		1
67	6295762E	Bed		1
68	6295763	Magnet		1
69	6295764E	Power Cord		1
70	6295765	Control Cord		1
71	6295914E	Strain Relief	PG11	1
72	6295767	Signal Cord		1
73	6295768	Socket Cap Screw	5/16"-18x1"	4
74	6295769	Lock Washer	5/16"	4
76	6295771	Motor Pulley		1
77	6295772	Motor Assembly Plate		1
78	6295773	Washer	7/16"	1
79	6295774	Set Screw	1/4"-20x3/8"	2
80	6295775	Lock Washer	7/16"	1
81	6295776	Socket Cap Screw	7/16"-14x1-1/4"	1
82	6295777	Large Washer		1
83	6295778A	Lock Handle		1
87	6295782E	Motor Label		1
88	6295783E	Motor		1
89	6295784E	Motor Cord		1
90	JWL1642-202	Live Center Body		1
91	JWL1642-237	Live Center Tip		1
92	JWL1642-238	Live Center Cap		1
93	JWL1642-239	Live Center Rod		1
94	3520A-289E	Warning Label		1
95	TS-081C022	Pan Head Screw	#10-24x3/8"	1

Headstock Assembly



Parts List for the 4224 Woodworking Lathe

Headstock Assembly

Index No.	Part No.	Description	Size	Qty.
1	6295785E	Handwheel		1
2	6295786	Lock Nut		1
3	6295787	Socket Cap Screw	M6x25	1
4	6295788	Bearing	63208	1
5	6295789	Wave Washer		1
6	6295790E	Headstock		1
7	6714160	Set Screw	1/4"-20x1/4"	2
8	6295792	Socket Cap Screw	3/8"-16x1-1/4"	4
9	6295793	Lock Washer	3/8"	4
10	6295794	Stud		4
11	6295795	Spindle Pulley		1
12	6295796	Set Screw	1/4"-20x3/8"	4
13	6295797	Bearing	6207LB	2
14	6295798	Bushing		1
15	6295799E	Front Plate		1
16	6295800	Hex Socket Round Head Screw	#10-24x1/2"	13
17	JWL1642-102	Spur Center	MT2#	1
18	6295802	Key	6x6x50	1
19	6295803E	Head Spindle		1
20	6294736E	Faceplate	3"	1
21	6295805	Belt	V-550J	1
22	6294747E	Guard Assembly		1
23	6295807E	Bracket		1
24	3064711E	Lathe Guard Bracket		1
25	6143004	Retaining Collar		2
26	JWL1642-168	Plunger		1
27	6295850	Socket Cap Screw	3/8"-16x3"	2
28	6861300	Lock Washer	3/8"	2
29	6295915	Control Pot Assembly		1
30	JWL1442-164	Knockout Rod		1
31	6295815	Tap Screw	M3x10	4
32	6295816	E-Ring	E-7	1
33	6295817	Index Bushing		1
34	6295818	Index Shaft		1
35	6295819	Index Knob		1
36	6295820	Spring		1
37	6295821	Bolt		1
38	6295822	Spring		1
39	6295823	Tap Screw	1/4"x1/2"	2
40	JWL1642-130A	Speed Indicator & Sensor Assembly		1
42	6295826	Fixed Plate		1
43	6295827	Nut		2
44	6295828	Washer		2
45	JWL1642-147	O-Ring		1
46	6860704	Lock Washer		2
47	6508007	Nut		2
48	JWL1642-146E	Knob		1
49	6295833E	Door Panel		1
50	6295834E	Speed Label		1

Index No.	Part No.	Description	Size	Qty.
-----------	----------	-------------	------	------

51	JWL1642-154	Door Hinge		1
52	6708019	Socket Cap Screw	#8-32x5/8"	4
53	JWL1642-155	Pad		1
54	6295838	Round Head Screw	M3x20	2
55	JWL1642-137	Push /Pull Switch		1
56	JWL1642-143	Control Panel Knob		1
57	JWL1642-141	Fwd/ Rev Switch		1
58	6295842E	Headstock Plate		1
59	6295843	Clamp		1
60	6295844	Nut	#10-24	1
61	6294744E	Faceplate Spanner		1
62	TS-0270011	Socket Cap Screw	5/16"-18x1/4"	2
63	6295923	Clamp Washer		1
64	6295726	Socket Head Cap Screw	M5x30	2
65	6295725	Washer	M5	4
66	4224-266E	Guard		1
67	6295727	Hex Nut	M5	2

4224
1791254M

	colour of strands	Litzenfarben	couleur des cordons
BK	black	schwarz	noir
WH	white	weiß	blanc
BU	blue	blau	bleu
YE	yellow	gelb	jaune
RD	red	rot	rouge
BN	brown	braun	brun
GY	grey	grau	gris
GNYE	green-yellow	grün-gelb	vert-jaune
OG	orange	orange	orange
VT	violet	violett	violet

	meaning of symbol	Bedeutung der Zeichen	interprétation
M	motor	Motor	moteur
S	switch	Schalter	interrupteur
C	condenser	Kondensator	condensateur
E	electronic unit	Elektronik Einheit	unité électronique
F	fuse	Sicherung	fusible
RS	reversing switch	Drehrichtungsschalter	commu. droite/gauche
S	centrifugal switch	Fliehkraftschalter	déclencheur centrifuge
OL	overload cut-off	Überlastschuttschalter	déclencheur surcharge
LS	limit switch	Positionsendschalter	micro

230/50/1

