

J E T

60 A

JOINTER

10000240M 230/50/1

10000240T 400/50/3

PARTS LIST
ERSATZTEILLISTE
LISTE DE PIECES

WMH Tool Group AG

Bahnstrasse 24, CH – 8603 Schwerzenbach

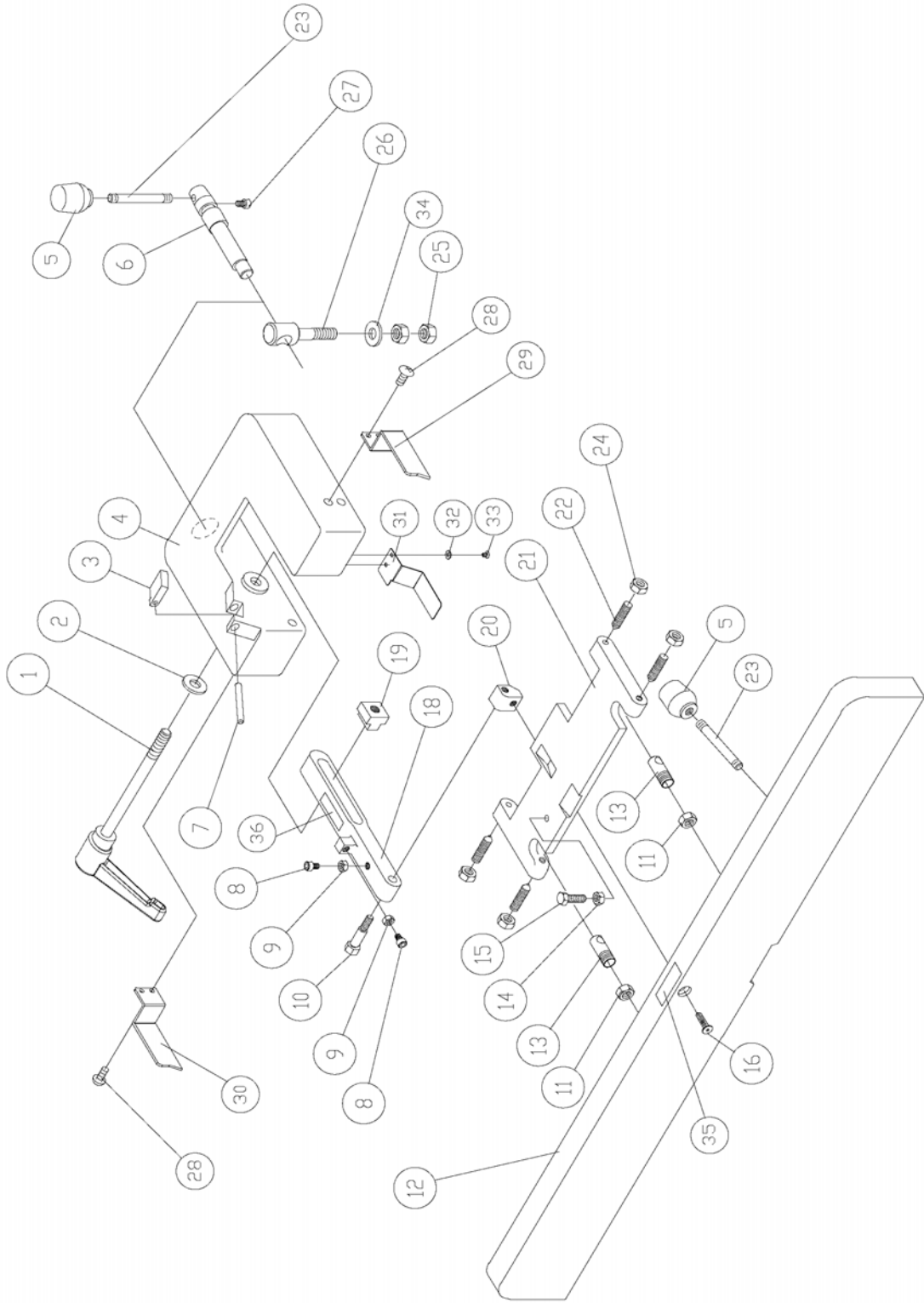
www.wmhtoolgroup.ch; info@wmhtoolgroup.ch

Tel +41 (0) 1 806 47 48

Fax +41 (0) 1 806 47 58



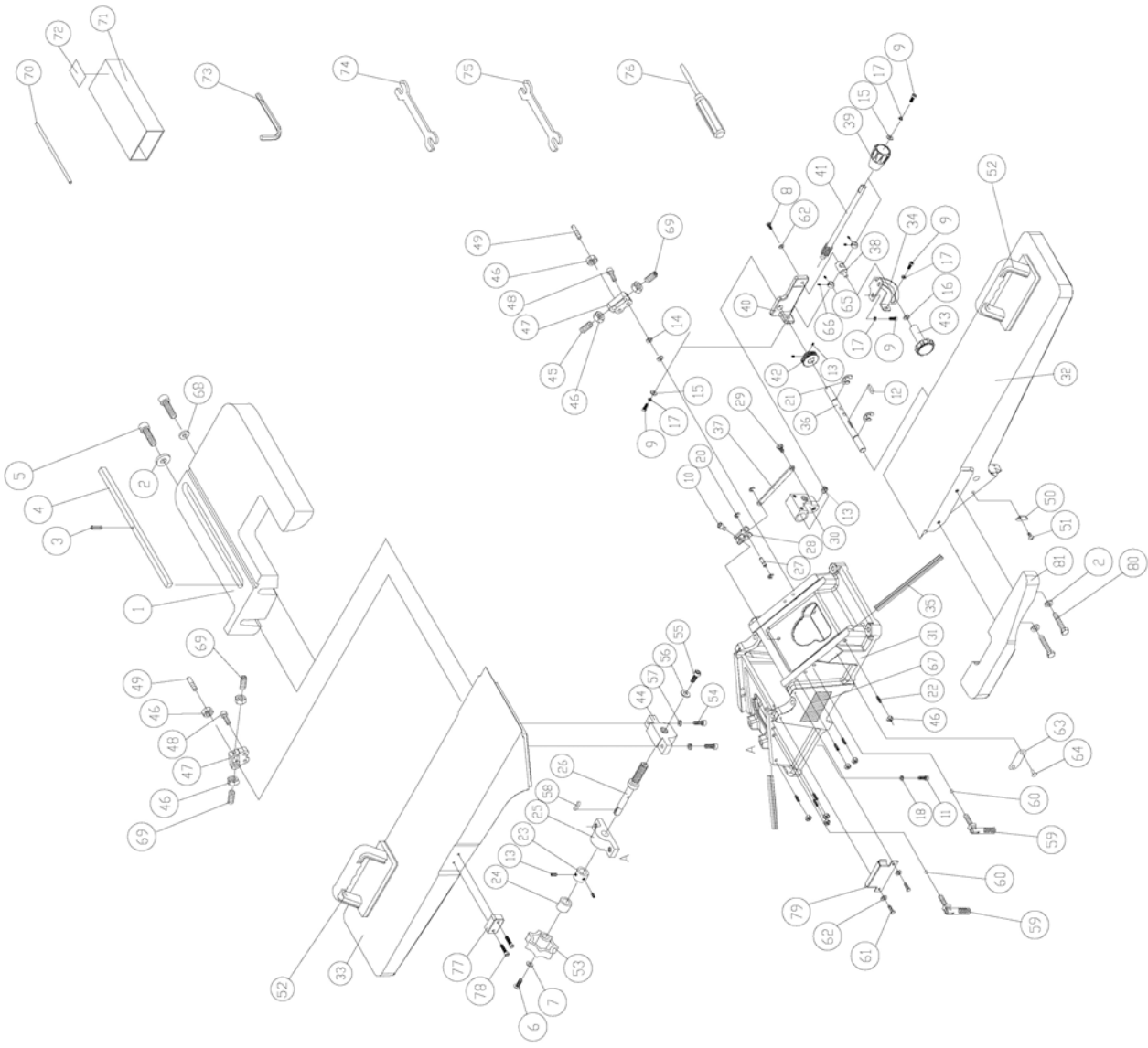
Fence Assembly for The 60A Jointer



Parts List For the 60A Jointer Fence Assembly

Index No.	Part No.	Description	Size	Qty.
	6296130E	Fence Assembly		1
1	6296143	Locking Bolt		1
2	6296066	Flat Washer	1/2"x1-1/8"D	1
3	6296067	Stop Block		1
4	6296068E	Fence Bracket		1
5	6285945	Knob		2
6	6296069	Locking Shaft		1
7	6296070	Pin	ø5mmx50mm	1
8	6296071	Cap Screw	1/4"-20x1-1/4"	2
9	6296072	Hex Nut	1/4"-20	2
10	6296073	Screw		1
11	6285940	Hex Nut	1/2"-20	2
12	6296075E	Fence Body		1
13	6296076	Bolt		2
14	6285966	Hex Nut	5/16"-18	1
15	6296077	Hex Screw	5/16"-18x1-1/4"	1
16	6296078	Hex Screw	5/16"-18x1-1/2"	1
18	6296080	Locking Link		1
19	6296081	Nut		1
20	6285947	Fixed Block		1
21	6296082	Fence Link		1
22	6285942	Cone Point Screw		4
23	6285944	Handle Stud		2
24	6285943	Hex Nut	3/8"-16	4
25	6296083	Hex Nut	1/2"-12	2
26	6296084	Bolt		1
27	6296085	Cap Screw	1/4"-20x1/2"	1
28	54A-F28E	Pan Head Screw	1/4"-20x3/8"	4
29	54A-F29E	Safety Guard - Left		1
30	54A-F30E	Safety Guard - Right		1
31	54A-F31E	Safety Guard - Bottom		1
32	54A-F32E	Flat washer	1/4"	2
33	54A-F33E	Flat Head Screw	1/4"-20x1/2"	2
34	54A-F34E	Flat Washer	1/2"x1-3/8D	1
35	54A-F35E	Direction Label		1
36	54A-F36E	Scale Label		1

Base & Table Assembly for The 60A Jointer

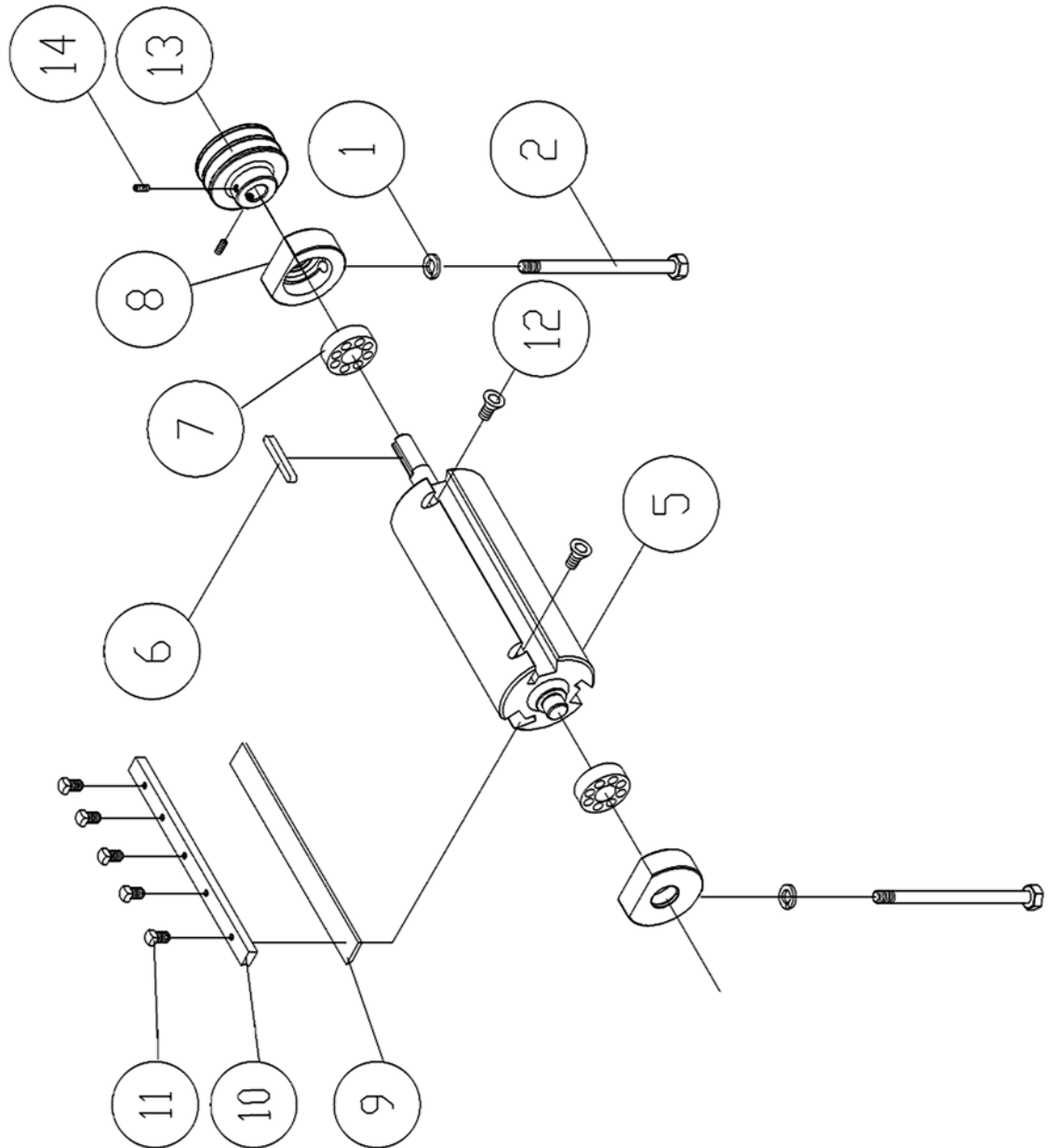


Parts List For the 60A Jointer Base & Table Assembly

Index No.	Part No.	Description	Size	Qty.
1	6296086	Base Slide		1
2	6296087	Flat Washer	3/8"	3
3	6296088	Spring Pin	4mm x 14mm	1
4	6296089	Key	9.5mm x 273mm	1
5	6285931	Cap Screw	3/8"-16 x 1-1/2"	2
6	60A-206	Pan Head Screw	5/16"-18x1/2"	1
7	TS-0680032	Flat Washer	5/16"	1
8	6296091	Hex Screw	1/4"-20 x3/4"	1
9	6296092	Cap Screw	1/4"-20 x 1/2"	5
10	6296093	Cap Screw	5/16"-18 x 3/4"	1
11	60A-211E	Cap Screw	1/2"-12x1-1/2"	2
12	6296094	Key	5mmx5mmx20mm	1
13	6285907	Set Screw	1/4"-20x3/8"	6
14	60A-214	Flat Washer	5/16"x22Dx3t	8
15	6296144	Flat Washer	1/4"	2
16	6296066	Flat Washer	1/2"	1
17	6296095	Spring Washer	1/4"	5
18	TS-0720111	Spring Washer	1/2"	2
19	60A-219E	Flat Washer	5/16"	1
20	6296015	Retaining Ring	ETW-6	3
21	6296022	Retaining Ring	ETW-12	2
22	TS-0270091	Set Screw	5/16"-18x1"	6
23	60A-223	Collar		1
24	60A-224	Bush		1
25	60A-225	Bracket		1
26	60A-226	Adjusting Screw		1
27	6296097	Shaft		1
28	6296098	Lock Bracket		1
29	6296099	Bolt		1
30	6296100	Bracket		1
31	60A-231E	Base		1
32	60A-232E	Front Table		1
33	60A-233E	Rear Table		1
34	60A-234	Plate		1
35	60A-235	Gib		2
36	60A-236	Shaft		1
37	6296107	Plate		1
38	6296108	Lock Plate		1
39	6296109	Handle		1
40	6296110	Adjusting Base		1
41	6296111	Worm Shaft		1
42	6296112	Worm		1
43	60A-243	Nut		1
44	60A-244	Bracket		1
45	6296060	Set Screw	5/16"-18x3/4"	1
46	6285966	Hex Nut	5/16"-18	12
47	6296114	Set Block		2
48	6296014	Cap Screw	5/16"-18x3/4"	4
49	6296115	Stud		2
50	6296116	Pointer		1
51	6296117	Pan Head Screw	5/32"-32x1/4"	1
52	6285917	Push Block		2
53	60A-253	Wheel		1

Index No.	Part No.	Description	Size	Qty.
54	TS-0209061	Cap Screw	3/8"-16x1-1/4"	2
55	TS-0208021	Cap Screw	5/16"-18x1/2"	1
56	TS-0680031	Flat Washer	5/16"x3/4"x3t	1
57	TS-0720091	Lock Washer	3/8"	2
58	60A-258	Key	5mmx5mmx12mm	1
59	60A-259	Lock Handle		2
60	60A-260	Ball	ø6	2
61	TS-0050021	Hex Bolt	1/4"-20x3/4"	2
62	60A-262	Flat Washer	1/4"	3
63	6296147E	Depth Scale		1
64	6296148	Rivet		6
65	6296151	Collar		2
66	6296152	Set Screw	1/4"-20x1/4"	4
67	60A-267E	I.D Label	1PH	1
	60A-267AE	I.D Label	3PH	1
68	54A-T68	Flat Washer	3/8"	1
69	54A-T69	Set Screw	5/16"-18x1-1/4"	3
70	54A-T70E	Club		1
71	54A-T71E	Knife Gauge		1
72	54A-T72E	Direction Label		1
73	54A-T73	Angle Wrench	3mm	1
74	54A-T74	Open End Wrench	8*10	1
75	54A-T75	Open End Wrench	12*14	1
76	54A-T76	Driver Wrench		1
77	54A-77E	Spacer		1
78	54A-78E	Cap Screw	M6x1.0Px50mm	2
79	60A-279E	Safety Guard		1
80	TS-0060051	Hex Bolt	3/8"-16x1"	2
81	60A-281E	Rabbit		1

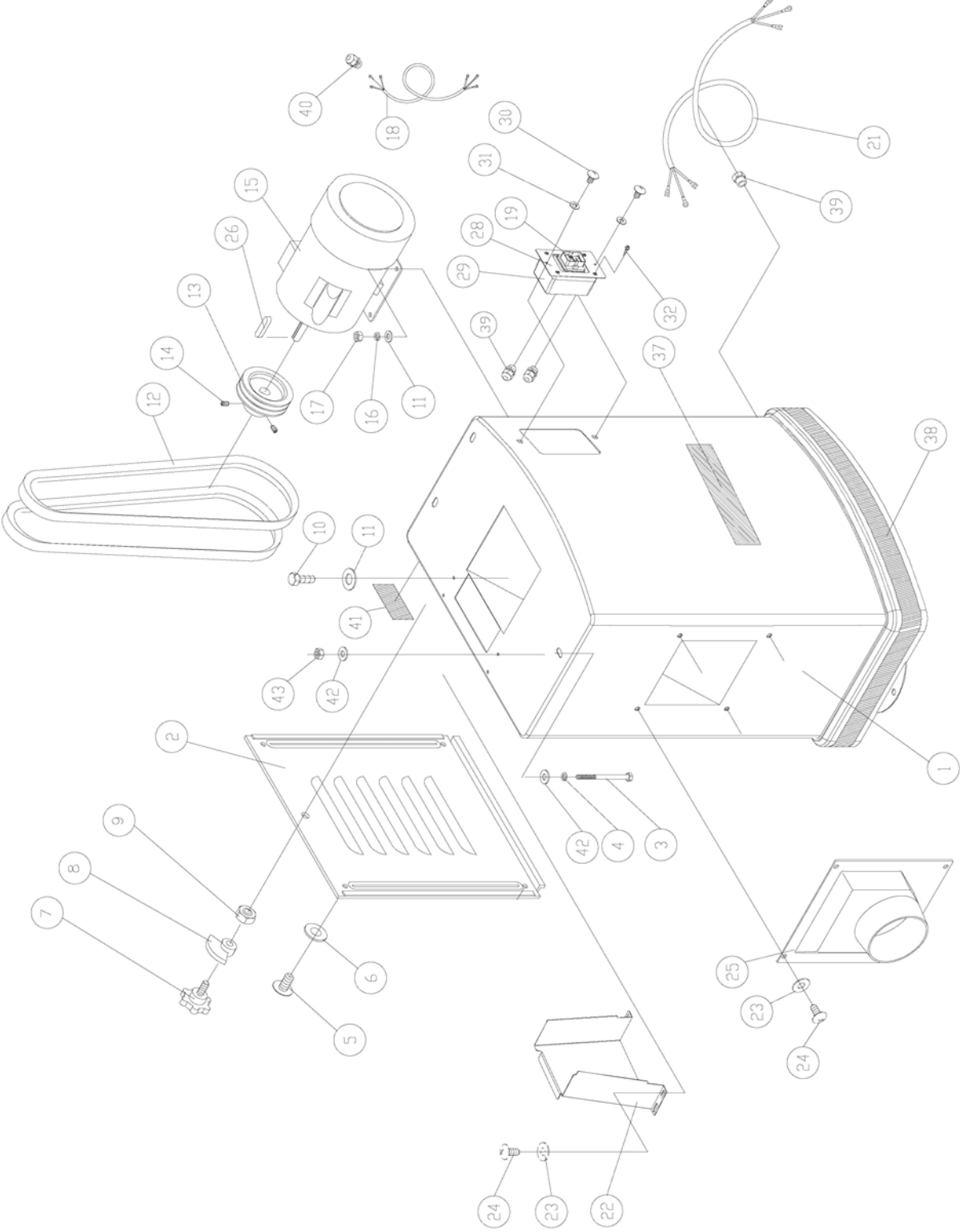
Cutterhead Assembly for The 60A Jointer



Parts List For the 60A Jointer Cutterhead Assembly

Index No.	Part No.	Description	Size	Qty.
	60A-CCA	Cutterhead Complete Assembly		1
1	6285852	Spring Washer	3/8"	2
2	60A-302	Stud		2
5	60A-305E	Cutterhead		1
6	6285857	Key	5mmx5mmx25mm	1
7	6285858	Bearing	6203-2NSE	2
8	6285859	Bearing housing		2
9	60A-309	Knife		3
	60A-KLBA	Knife Lock Bar Assembly (Items 10 & 11)		1
10	60A-310	Knife Lock Bar		3
11	6285862	Hex Screw		15
12	6285863	Flat Socket Screw	M5x0.8Px12mm	6
13	60A-313E	Pulley		1
14	6285865	Set Screw	1/4"-20x1/4"	2

Stand Assembly for the 60A Jointer



Parts List For the 60A Jointer Stand Assembly

Index No.	Part No.	Description	Size	Qty.
	60A-SCAE	Stand Complete Assembly		1
1	60A-401E	Stand		1
2	60A-402	Door		1
3	60A-403	Cap Screw	3/8"-16x2-1/8"	3
4	6285852	Spring Washer	3/8"	3
5	TS-1534051	Screw	M6-1.0Px12	2
6	TS-1550041	Flat Washer	M6	2
7	6285975	Screw Knob		1
8	6285976	Door Lock		1
9	6285977	Hex Nut	3/8"-16	1
10	6285980	Hex Screw	5/16"-18x3/4"	4
11	6285805	Flat Washer	5/16"	8
12	6077233E	V-Belt	M-44	2
13	60A-413E	Motor Pulley		1
14	6285865	Set Screw	1/4"-20x1/4"	2
15	60A-415E	Motor	1-1/2HP, 1PH	1
	60A-415AE	Motor	2HP, 3PH	1
16	6285988	Spring Washer	5/16"x5/8"	4
17	6285966	Hex Nut	5/16"-18	4
18	60A-418E	Motor Cord	H05VV-Fx1.0mm	1
	60A-418AE	Motor Cord		1
19	60A-419E	Switch	1PH	1
	60A-419AE	Switch	3PH	1
21	60A-421E	Power Cord	H07RN-Fx1.0mm	1
	60A-421AE	Power Cord		1
22	60A-422E	Belt Guard		1
23	6285909	Washer	1/4"-20x1/2"	8
24	6285910	Handle Screw	1/4"-20x1/2"	8
25	60A-425	Dust Chute		1
26	6285978	Key	5mmx5mmx30mm	1
28	60A-428E	Switch Cover		1
29	60A-429E	Switch Box		1
30	60A-430E	Pan Head Screw	1/4"-20x1/4"	2
31	TS-0680022	Washer	1/4"	2
32	6296138	Machine Screw	M4x1.59Px38mm	4
37	6296149E	Name Plate		1
38	54A-S38E	Strip		1
39	54A-S39E	Strain Relief	PG11	3
40	54A-S40E	Strain Relief	PG9	1
	54A-S40AE	Strain Relief	PG13.5	1
41	60A-441E	Motor Label	1-1/2HP	1
	60A-441AE	Motor Label	2HP	1
42	TS-0680041	Flat Washer	3/8"	6
43	TS-0561031	Hex Nut	3/8"	3

**60A
10000240M**

	colour of strands	Litzenfarben	couleur des cordons
BK	black	schwarz	noir
WH	white	weiß	blanc
BU	blue	blau	bleu
YE	yellow	gelb	jaune
RD	red	rot	rouge
BN	brown	braun	brun
GY	grey	grau	gris
GNYE	green-yellow	grün-gelb	vert-jaune
OG	orange	orange	orange
VT	violet	violett	violet

	meaning of symbol	Bedeutung der Zeichen	interprétation
M	motor	Motor	moteur
S	switch	Schalter	interrupteur
C	condenser	Kondensator	condensateur
E	electronic unit	Elektronik Einheit	unité électronique
F	fuse	Sicherung	fusible
RS	reversing switch	Drehrichtungsschalter	commu. droite/gauche
CS	centrifugal switch	Fliehkraftschalter	déclencheur centrifuge
OL	overload cut-off	Überlastschuttschalter	déclencheur surcharge
LS	limit switch	Positionsendschalter	micro

230/50/1



60A 10000240T

	colour of strands	Litzenfarben	couleur des cordons
BK	black	schwarz	noir
WH	white	weiß	blanc
BU	blue	blau	bleu
YE	yellow	gelb	jaune
RD	red	rot	rouge
BN	brown	braun	brun
GY	grey	grau	gris
GNYE	green-yellow	grün-gelb	vert-jaune
OG	orange	orange	orange
VT	violet	violett	violet

	meaning of symbol	Bedeutung der Zeichen	interprétation
M	motor	Motor	moteur
S	switch	Schalter	interrupteur
C	condenser	Kondensator	condensateur
E	electronic unit	Elektronik Einheit	unité électronique
F	fuse	Sicherung	fusible
RS	reversing switch	Drehrichtungsschalter	commu. droite/gauche
CS	centrifugal switch	Fliehkraftschalter	déclencheur centrifuge
OL	overload cut-off	Überlastschutzschalter	déclencheur surcharge
LS	limit switch	Positionsendschalter	micro

400/50/3

