

J E T

80S

OSCILLATING EDGE SANDER

1791101M 1791101T
230/50/1 400/50/3

PARTS LIST
ERSATZTEILLISTE
LISTE DE PIECES

WMH Tool Group AG

Bahnstrasse 24, CH – 8603 Schwerzenbach
www.wmhgroupool.ch; info@wmhtoolgroup.ch
Tel +41 (0) 44 806 47 48
Fax +41 (0) 44 806 47 58



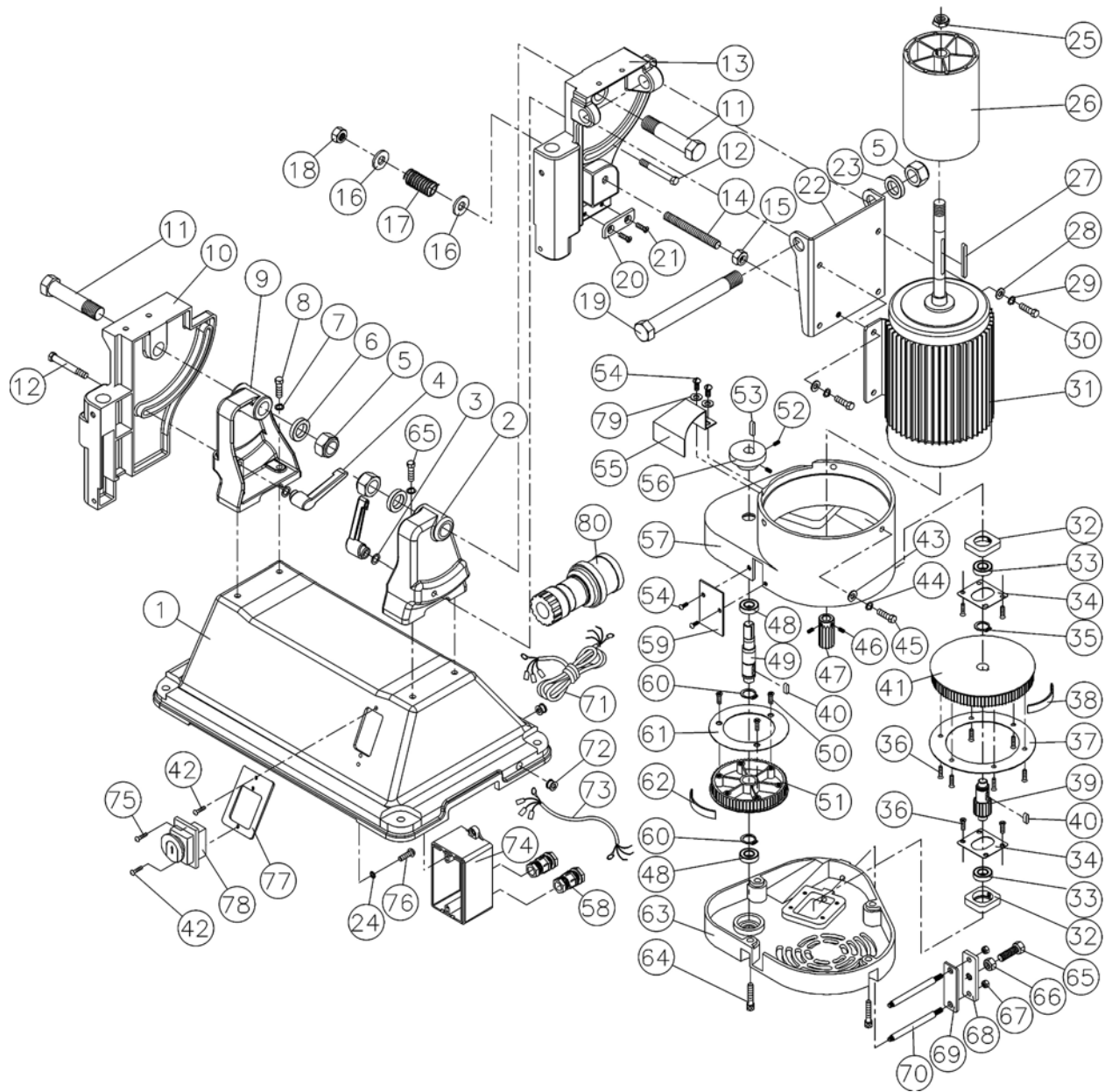
P-1791101M/1791101T 02/05

Parts List: Base and Drive Assembly

Index No.	Part No.	Description	Size	Qty
1	80S-101	Base		1
2	80S-102	Right Support Bracket		1
3	TS-0680041	Flat Washer	3/8	2
4	80S-104	Locking Handle		2
5	TS-2342241	Nylon Insert Lock Nut	M24	3
6	TS-1550121	Flat Washer	M24	2
7	TS-0720091	Lock Washer	3/8	4
8	TS-0060071	Hex Cap Screw	3/8-16 x 1-1/2	4
9	80S-109	Left Support Bracket		1
10	80S-110	Left Tilt Bracket		1
11	80S-111	Bolt		2
12	80S-112	Bolt		2
13	80S-113	Right Tilt Bracket		1
14	80S-114	Lead Screw		1
15	TS-0561052	Hex Nut	1/2-20	1
16	TS-0680061	Flat Washer	1/2	2
17	80S-117	Spring		1
18	TS-0640112	Nylon Insert Lock Nut	1/2-20	1
19	80S-119	Bolt		1
20	80S-120	Plate		1
21	TS-0245031	Socket Flat Head Screw	1/4-20 x 5/8	2
22	80S-122	Motor Plate		1
23	80S-123	Collar		1
24	TS-0733031	External Tooth Lock Washer	#10	1
25	TS-0640132	Nylon Insert Lock Nut	5/8-18	1
26	80S-126	Drive Drum		1
27	80S-127	Key	5 x 5 x 70	1
28	TS-0680031	Flat Washer	5/16	4
29	TS-0720081	Lock Washer	5/16	4
30	TS-0081031	Hex Cap Screw	5/16-18 x 3/4	4
31	80S-131E	Motor 230V	1-1/2 HP, 230 V, 1PH.	1
	80S-131AE	Motor 400V	2 HP, 400 V, 3PH	1
	80S-131C	Capacitor (not shown)	200MFD	1
	80S-131B	Capacitor (not shown)	40 μ F	1
32	80S-132	Bearing Housing		2
33	BB-6001ZZ	Ball Bearing	6001ZZ	2
34	80S-134	Bearing Housing Cover		2
35	80S-135	Retainer Ring		2
36	80S-136	Flat Head Screw	#10-24 x 3/16	12
37	80S-137	Lock Plate		2
38	80S-138	Timing Belt	500-5GT	1
39	80S-139	Timing Shaft		1
40	80S-140	Key	5 x 5 x 15	2
41	80S-141	Timing Pulley		1
42	TS-081C011	Flat Head Screw	#10-24 x 1/4	8
43	TS-0680021	Flat Washer	1/4	3
44	TS-0720071	Lock Washer	1/4	3
45	TS-0050011	Hex Cap Screw	1/4-20 x 1/2	3
46	TS-1523011	Socket Set Screw	M6 x 6	2
47	80S-147	Timing Shaft		1
48	BB-6002ZZ	Ball Bearing	6002ZZ	2
49	80S-149	Shaft		1
50	TS-081C011	Flat Head Screw	#10-24 x 1/4	6
51	80S-151	Timing Pulley		1
52	TS-0267021	Socket Set Screw	1/4-20 x 1/4	2
53	80S-153	Key	5 x 5 x 20	2
54	TS-0813022	Round Head Slotted Screw	1/4-20 x 3/8	4

Index No.	Part No.	Description	Size	Qty
55	80S-155	Eccentric Cam Cover		1
56	80S-156	Eccentric Cam		1
57	80S-157	Reducer Box		1
58	80S-158E	Strain Relief		2
59	80S-159	Clear Shield		1
60	80S-160	Retainer Ring		2
61	80S-161	Lock Plate		2
62	80S-162	Timing Belt	415-5GT	1
63	80S-163	Reducer Box Cover		1
64	TS-0208041	Socket Head Cap Screw	5/16-18 x 3/4	4
65	TS-0060061	Hex Cap Screw	3/8-16 x 1-1/4	1
66	TS-0561031	Hex Nut	3/8-16	1
67	TS-1540041	Hex Nut	M6	2
68	80S-168	Belt Tension Adjusting Plate		1
69	80S-169	Lock Plate		1
70	80S-170	Adjusting Bar		2
71	80S-171E	Power Cord 230V(For 1-1/2 HP Motor)		1
	80S-171AE	Power Cord 400V (For 2HP Motor)		1
72	80S-172	Plastic Bushing		2
73	80S-173E	Motor Cord 230V(For 1-1/2 HP)		1
	80S-173AE	Motor Cord 400V(For 2HP)		1
74	80S-174	Switch Box		1
75	TS-074A062	Self Tapping Screw	#10 x 1	1
76	TS-081B062	Machine Screw	#8-32 x 1	1
77	80S-177E	Magnetic Switch Cover		1
78	80S-178E	Magnetic Switch 230V (For 1-1/2 HP Motor)		1
	80S-178AE	Magnetic Switch 400V (For 2HP Motor)		1
79	TS-0680021	Flat Washer	1/4	1
80	80S-180AE	Plug 400V (For 2HP Motor)		1

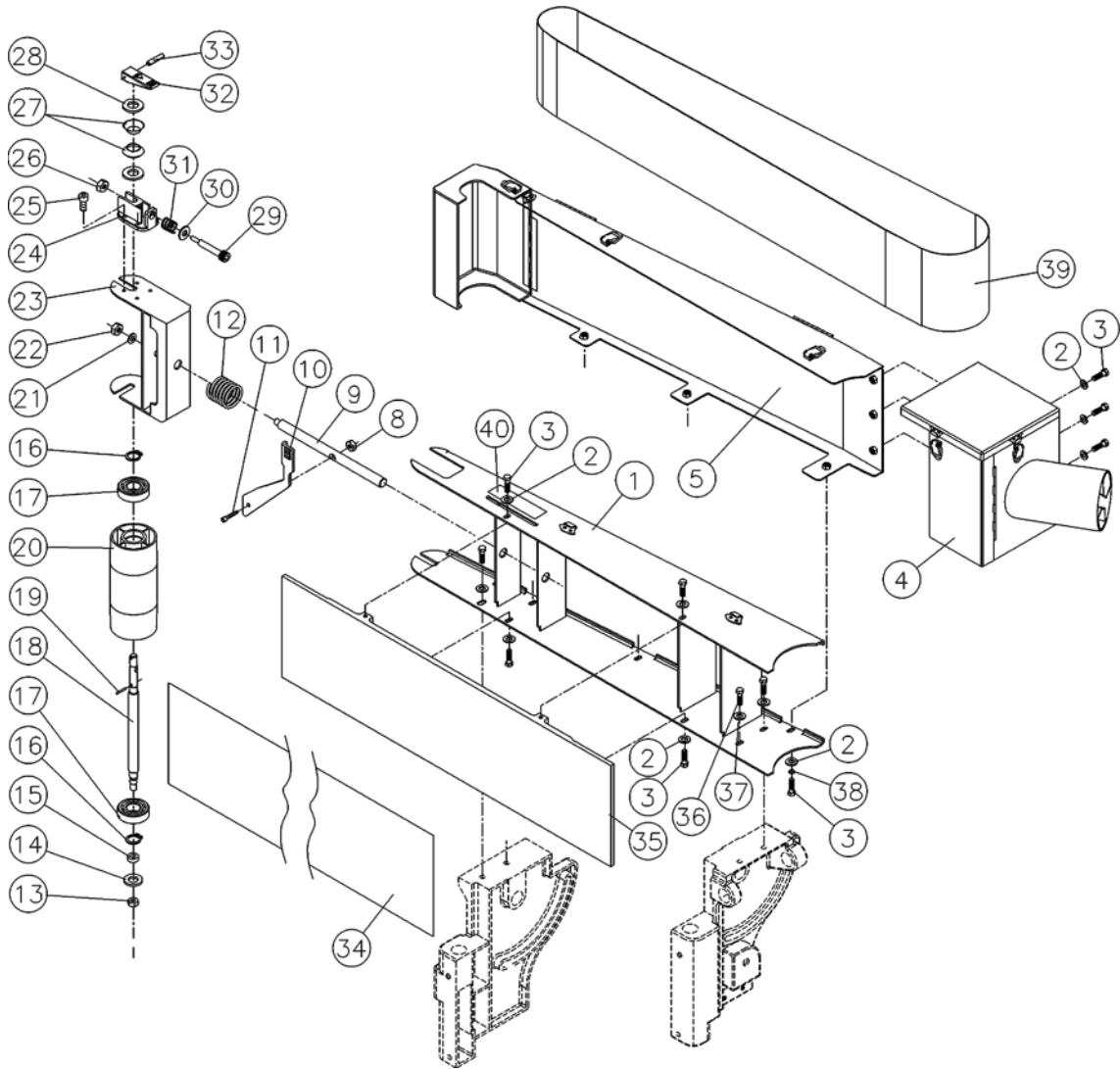
Base and Drive Assembly



Parts List: Sanding Belt Assembly

Index No.	Part No.	Description	Size	Qty
1	80S-201	Belt Support		1
2	TS-0680021	Flat Washer	1/4	10
3	TS-0050011	Hex Cap Screw	1/4-20 x 1/2	10
4	80S-204	4" Dust Port		1
5	80S-205	Belt Guard		1
7	80S-207	Idler Drum Guard		1
8	TS-0640071	Nylon Insert Lock Nut	1/4-20	1
9	80S-209	Shaft		1
10	80S-210	Tension Adjustment Handle		1
11	TS-0207071	Socket Head Cap Screw	1/4-20 x 1-1/4	1
12	80S-212	Spring		1
13	TS-0640091	Nylon Insert Lock Nut	3/8-16	1
14	TS-0680041	Flat Washer	3/8	1
15	80S-215	Bushing		1
16	80S-216	Retainer Ring		2
17	BB-6201VV	Ball Bearing	BB-6201VV	2
18	80S-218	Idler Drum Shaft		1
19	80S-219	Roll Pin		1
20	80S-220	Idler Drum		1
21	TS-0680041	Flat Washer	3/8	1
22	TS-0640091	Nylon Insert Lock Nut	3/8-16	1
23	80S-223	Support Bracket		1
24	JSG96-230	Micro-Adjusting Seat		1
25	TS-0207011	Socket Head Cap Screw	1/4-20 x 3/8	4
26	TS-1541021	Nylon Insert Lock Nut	M6	1
27	JSG96-237	Disc Spring		2
28	JSG96-236	Washer		2
29	JSG96-232	Screw		1
30	JSG96-233	Adjusting Knob		1
31	JSG96-234	Spring		1
32	JSG96-238	Lock Handle		1
33	JSG96-239	Roll Pin		1
34	80S-234	Graphite Pad		1
35	80S-235	Platen		1
36	TS-0051021	Hex Cap Screw	5/16-18 x 5/8	4
37	TS-0680031	Flat Washer	5/16	4
38	TS-0720071	Lock Washer	1/4	3
39	80S-239	Running Direction Label (Not Shown)		1

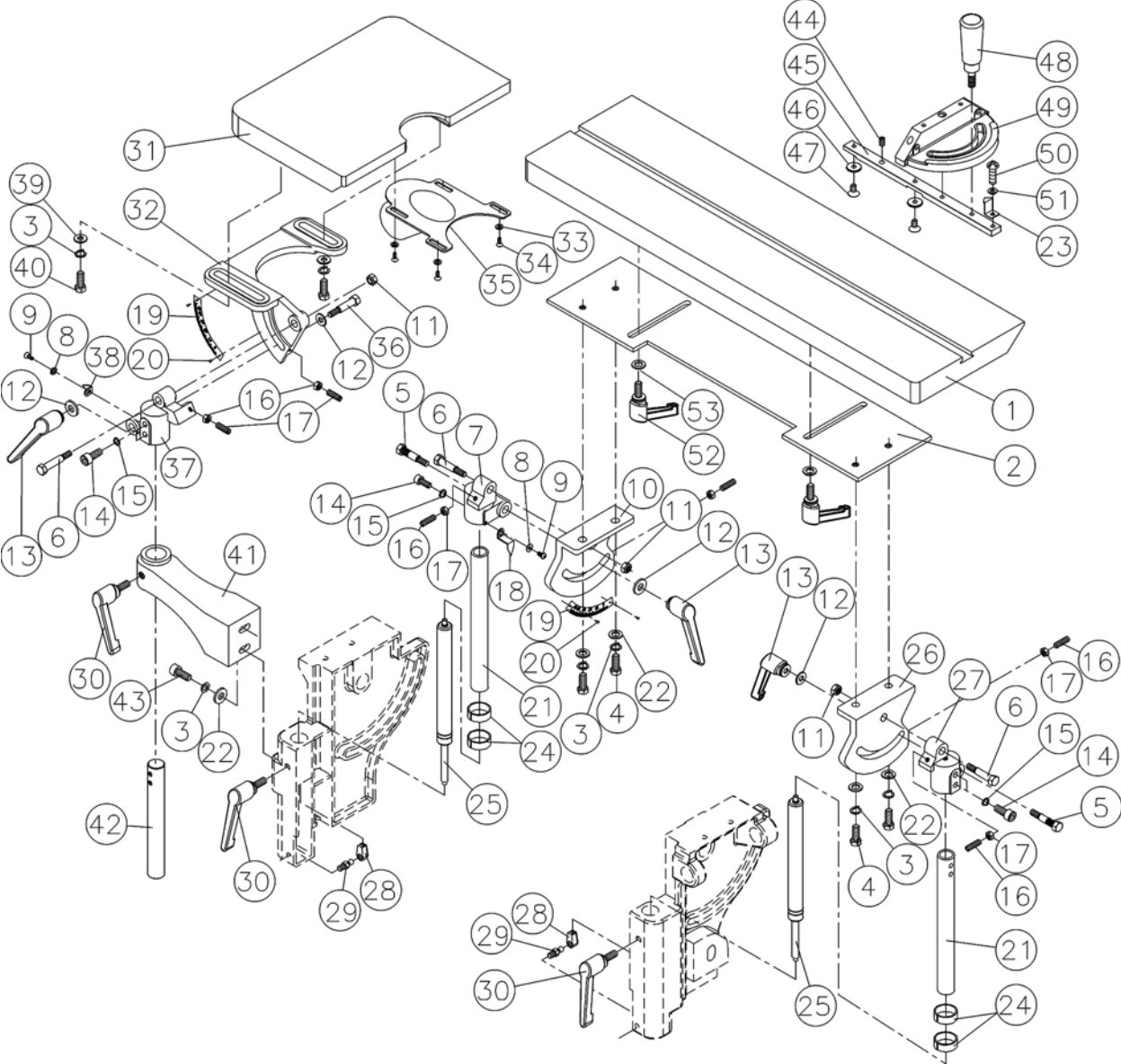
Sanding Belt Assembly



Parts List: Table Assembly

Index No.	Part No.	Description	Size	Qty
1	80S-301	Main Table		1
2	80S-302	Adjusting Plate		1
3	TS-0720081	Lock Washer	5/16	8
4	TS-0081031	Hex Cap Screw	5/16-18 x 3/4	4
5	80S-305	Bolt		2
6	80S-306	Bolt		3
7	80S-307	Left, Table Support Bracket		1
8	TS-1550021	Flat Washer	M4	2
9	TS-2171012	Pan Head Machine Screw	M4 x 6	2
10	80S-310	Left, Table Tilt Bracket		1
11	TS-0640091	Nylon Insert Lock Nut	3/8-16	3
12	TS-0680041	Flat Washer	3/8	3
13	80S-313	Locking Handle		3
14	TS-0207031	Socket Head Cap Screw	1/4-20 x 5/8	6
15	TS-0720071	Lock Washer	1/4	6
16	TS-1522051	Socket Set Screw	M5 x 16	6
17	TS-1540031	Hex Nut	M5	6
18	80S-318	Pointer		1
19	80S-319	Angle Scale		2
20	80S-320	Rivet		4
21	80S-321	Support Post		2
22	TS-0680031	Flat Washer	5/16	6
23	80S-323	Pointer		1
24	80S-324	Bushing		4
25	80S-325	Cylinder		2
26	80S-326	Right, Table Tilt Bracket		1
27	80S-327	Right, Table Support Bracket		1
28	80S-328	Cylinder Head		2
29	80S-329	Cylinder Fitting		2
30	80S-330	Locking Handle		3
31	80S-331	Contour Sanding Table		1
32	80S-332	Side Table Tilt Bracket		1
33	TS-0680011	Flat Washer	3/16	4
34	TS-081C022	Pan Head Machine Screw	#10-24 x 3/8	4
35	80S-335	Dust Port		1
36	80S-336	Bolt		1
37	80S-337	Side Table Support Bracket		1
38	80S-338	Pointer		1
39	TS-0680031	Flat Washer	5/16	2
40	TS-0051051	Hex Cap Screw	5/16-18 x 1	2
41	80S-341	Arm		1
42	80S-342	Support Post		1
43	TS-0208041	Socket Head Cap Screw	5/16-18 x 3/4	2
	80S-MGA	Miter Gauge Assembly (Index #23, #44 to #51)		1
44	TS-0271021	Socket Set Screw	3/8-16 x 5/16	1
45	80S-345	Guide Bar		1
46	80S-346	Guide Piece		2
47	80S-347	Flat Head Screw	1/4-20 x 5/16	2
48	80S-348	Handle		1
49	80S-349	Miter Gauge Body		1
50	TS-0810012	Round Head Slotted Screw	#10-24 x 1/4	1
51	TS-1550031	Flat Washer	M5	1
52	80S-352	Handle	5/16	2
53	80S-353	Flat Washer	5/16	2

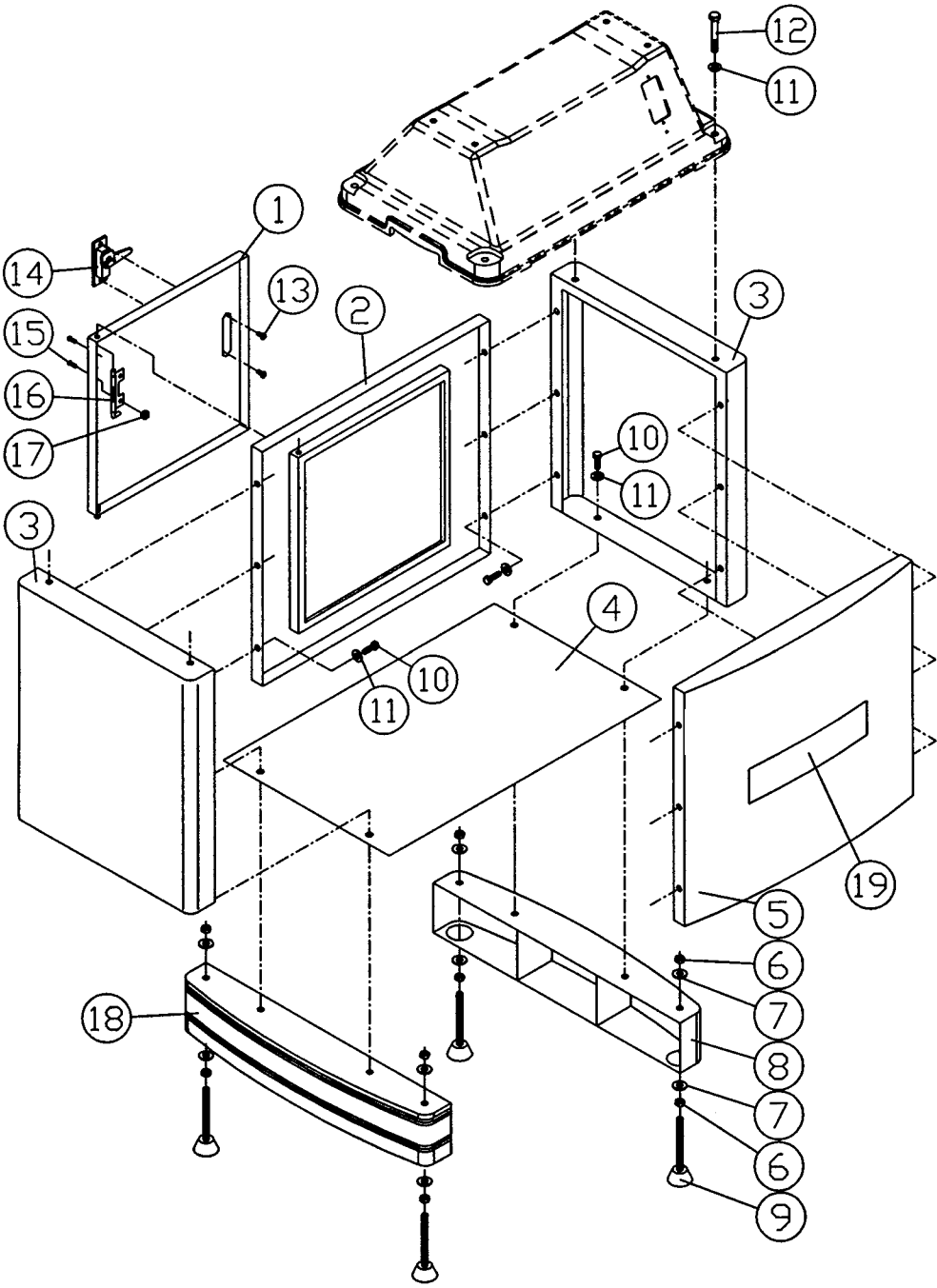
Table Assembly



Parts List: Stand Assembly

Index No.	Part No.	Description	Size	Qty
1	80S-401	Door		1
2	80S-402	Rear Plate		1
3	80S-403	Side Plate		2
4	80S-404	Bottom Plate		1
5	80S-405	Front Plate		1
6	TS-0561031	Hex Nut	3/8-16	8
7	TS-0680041	Flat Washer	3/8	8
8	80S-408	Foot		2
9	80S-409	Leveling Pad		4
10	TS-0060031	Hex Cap Screw	3/8-16 x 3/4	16
11	TS-0680041	Flat Washer	3/8	20
12	TS-0060091	Hex Cap Screw	3/8-16 x 2	4
13	80S-413	Screw	M3 x 4	2
14	80S-414	Latch		1
15	TS-081F032	Pan Head Machine Screw	1/4-20 x 1/2	2
16	80S-416	Door Hinge		1
17	TS-0561011	Hex Nut	1/4-20	2
18	80S-418	Stripe		2
19	80S-419	JET Logo		1

Stand Assembly

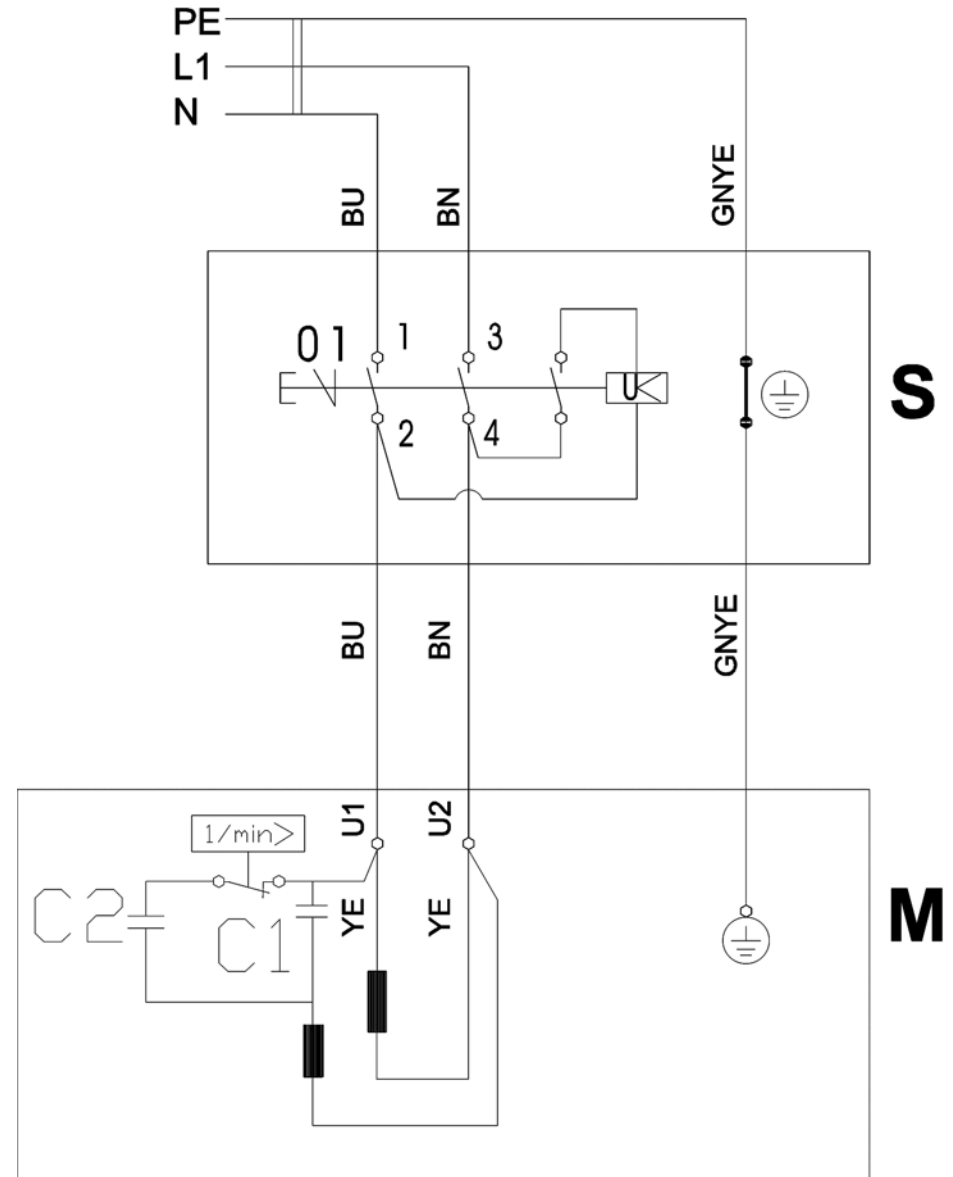


80S
1791101M

230/50/1

	colour of strands	Litzenfarben	couleur des cordons
BK	black	schwarz	noir
WH	white	weiß	blanc
BU	blue	blau	bleu
YE	yellow	gelb	jaune
RD	red	rot	rouge
BN	brown	braun	brun
GY	grey	grau	gris
GNYE	green-yellow	grün-gelb	vert-jaune
OG	orange	orange	orange
VT	violet	violett	violet

	meaning of symbol	Bedeutung der Zeichen	interprétation
M	motor	Motor	moteur
S	switch	Schalter	interrupteur
C	condenser	Kondensator	condensateur
E	electronic unit	Elektronik Einheit	unité électronique
F	fuse	Sicherung	fusible
RS	reversing switch	Drehrichtungsschalter	commu. droite/gauche
CS	centrifugal switch	Fliehkraftschalter	déclencheur centrifuge
OL	overload cut-off	Überlastschuttschalter	déclencheur surcharge
LS	limit switch	Positionsendschalter	micro



80S
1791101T

400/50/3

	colour of strands	Litzenfarben	couleur des cordons
BK	black	schwarz	noir
WH	white	weiß	blanc
BU	blue	blau	bleu
YE	yellow	gelb	jaune
RD	red	rot	rouge
BN	brown	braun	brun
GY	grey	grau	gris
GNYE	green-yellow	grün-gelb	vert-jaune
OG	orange	orange	orange
VT	violet	violett	violet

	meaning of symbol	Bedeutung der Zeichen	interprétation
M	motor	Motor	moteur
S	switch	Schalter	interrupteur
C	condenser	Kondensator	condensateur
E	electronic unit	Elektronik Einheit	unité électronique
F	fuse	Sicherung	fusible
RS	reversing switch	Drehrichtungsschalter	commu. droite/gauche
CS	centrifugal switch	Fliehkraftschalter	déclencheur centrifuge
OL	overload cut-off	Überlastschuttschalter	déclencheur surcharge
LS	limit switch	Positionsendschalter	micro

