

# **J E T**

**AFS-1000B AIR FILTRATION SYSTEM**

**708620M**

**230/50/1**

**PARTS LIST  
ERSATZTEILLISTE  
LISTE DE PIECES**

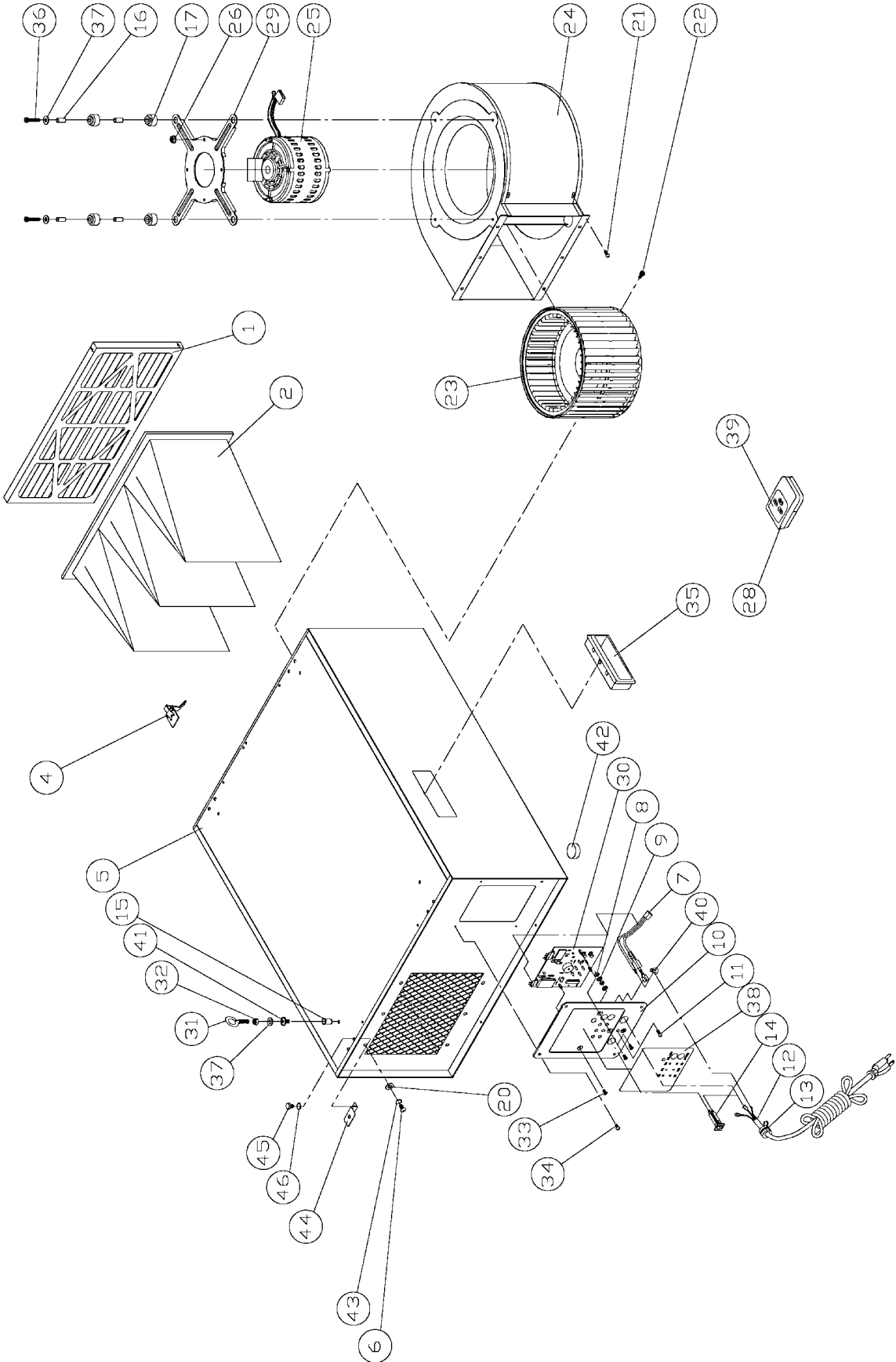
**WMH Tool Group AG**  
Bahnstrasse 24, CH-8603 Schwerzenbach  
[www.wmhtoolgroup.ch](http://www.wmhtoolgroup.ch); [info@wmhtoolgroup.ch](mailto:info@wmhtoolgroup.ch)

Tel +41 (0) 1 806 47 48  
Fax +41 (0) 1 806 47 58

P-708526M 03/02



# Parts Breakdown



## Parts List for the AFS-1000B Air Filtration

Index No.	Part No.	Description	Size	Qty.
1	708731	Filter		1
2	708733	Filter Bag		1
4	AB001008	Door Clip Set		2
5	AB001108W	Air Box		1
6	SJ069300	Pan Head Bolt	M6x12	6
7	OO1033	Switch Wire w/Terminal		1
8	NH050800	Nut	M5	2
9	WE050000	Star Washer	M5	2
10	OO1022W	Switch Plate		1
	AB001022W	Switch Plate Set (assembly not shown)		1
11	SP059300	Pan Head Bolt	M5x12	1
12	IC001016	Electric Wire		1
13	709409	Strain Relief		1
14	330075	3A Thermos Switch		1
15	10042	Nut	M6	4
16	330006	Sleeve		4
17	330005	Spacer		4
20	WF061310	Flat Washer	M6	6
21	ST049200	Tapping Screw	M4x8	2
22	SR089300	Hex Socket Bolt	M8x12	1
23	OO1055	Fan Blade		1
24	OO1056	Fan Housing		1
25	OO1057-1	Motor		1
	CA0030400	Capacitor (not shown)	3uF,400VAC	1
26	NF050800	Nut	M5	4
28	708711	Remote Control		1
29	330004	Flange		1
30	330043	PC Board		1
31	OO1023	Eye Bolt		4
32	NH061000	Nut	M6	4
33	SN490200	Counter Sunk Bolt	1/8"x1/4"	3
34	SP049100	Pan Head Bolt	M4x6	4
35	OO1029	Concave Handle		2
36	SR060600	Hex Socket Bolt	M6x30	4
37	WF061620	Washer	M6x16	8
38	LM000593	I.D. Label		1
39	LM000344	Remote Label		1
40	990638	Wiring Nut	P2	1
41	SF069200	Rivet Nut	M6x8	4
42	330074	Pad		4
43	WS060000	Spring Washer	M6	6
44	OO1027	Hanger Plate		4
45	SH069200	Hex Head Bolt	M6x8	8
46	WS060000	Spring Washer	M6	8
	OO1045	Color Stripe (not shown)		1
	AH001103	Hardware Kit (not shown)		1
	LM000280	JET Air Filtration I.D. Label (not shown: side of cabinet)		2

### Replacement Filters:

708733	Inner Filter
708731	Electrostatic Filter
708734	Charcoal Filter
708732	Washable Electrostatic Filter

**AFS-1000B**  
**708620 M**

**230/50/1**

	colour of strands	Litzenfarben	couleur des cordons
BK	black	schwarz	noir
WH	white	weiß	blanc
BU	blue	blau	bleu
YE	yellow	gelb	jaune
RD	red	rot	rouge
BN	brown	braun	brun
GY	grey	grau	gris
GNYE	green-yellow	grün-gelb	vert-jaune
OG	orange	orange	orange
VT	violet	violett	violet

	meaning of symbol	Bedeutung der Zeichen	interprétation
M	motor	Motor	moteur
S	switch	Schalter	interrupteur
C	condenser	Kondensator	condensateur
E	electronic unit	Elektronik Einheit	unité électronique
F	fuse	Sicherung	fusible
RS	reversing switch	Drehrichtungsschalter	commu. droite/gauche
CS	centrifugal switch	Fliehkraftschalter	déclencheur centrifuge
OL	overload cut-off	Überlastschuttschalter	déclencheur surcharge
LS	limit switch	Positionsendschalter	micro