



HBS-1319V

HORIZONTAL BANDSAW

HBS-1319V...50000441T .. 3~400V, 50Hz

PARTS LIST

JPW (Tool) AG

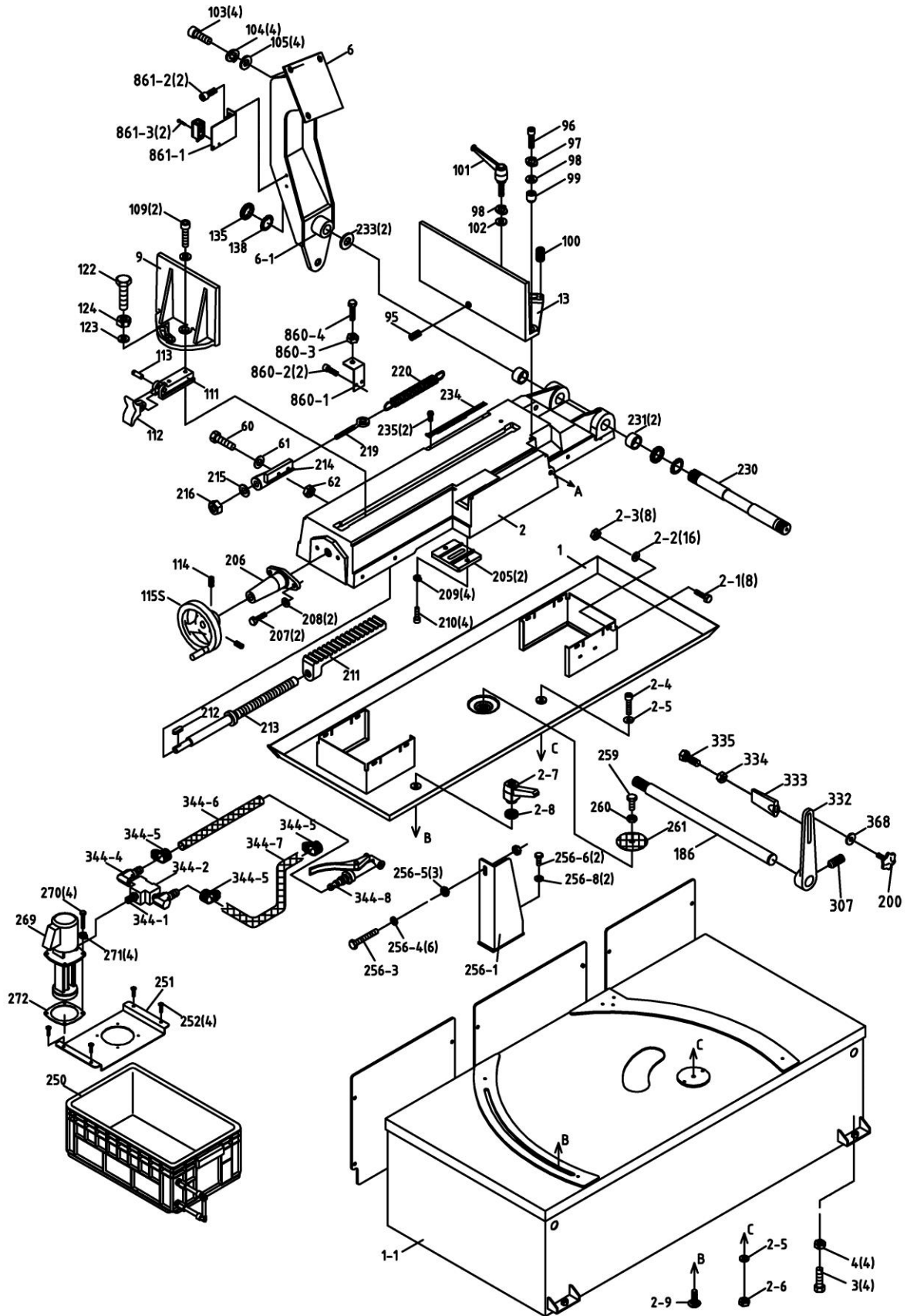
Tämperlistrasse 5
CH-8117 Fällanden
Switzerland

Phone +41 44 806 47 48

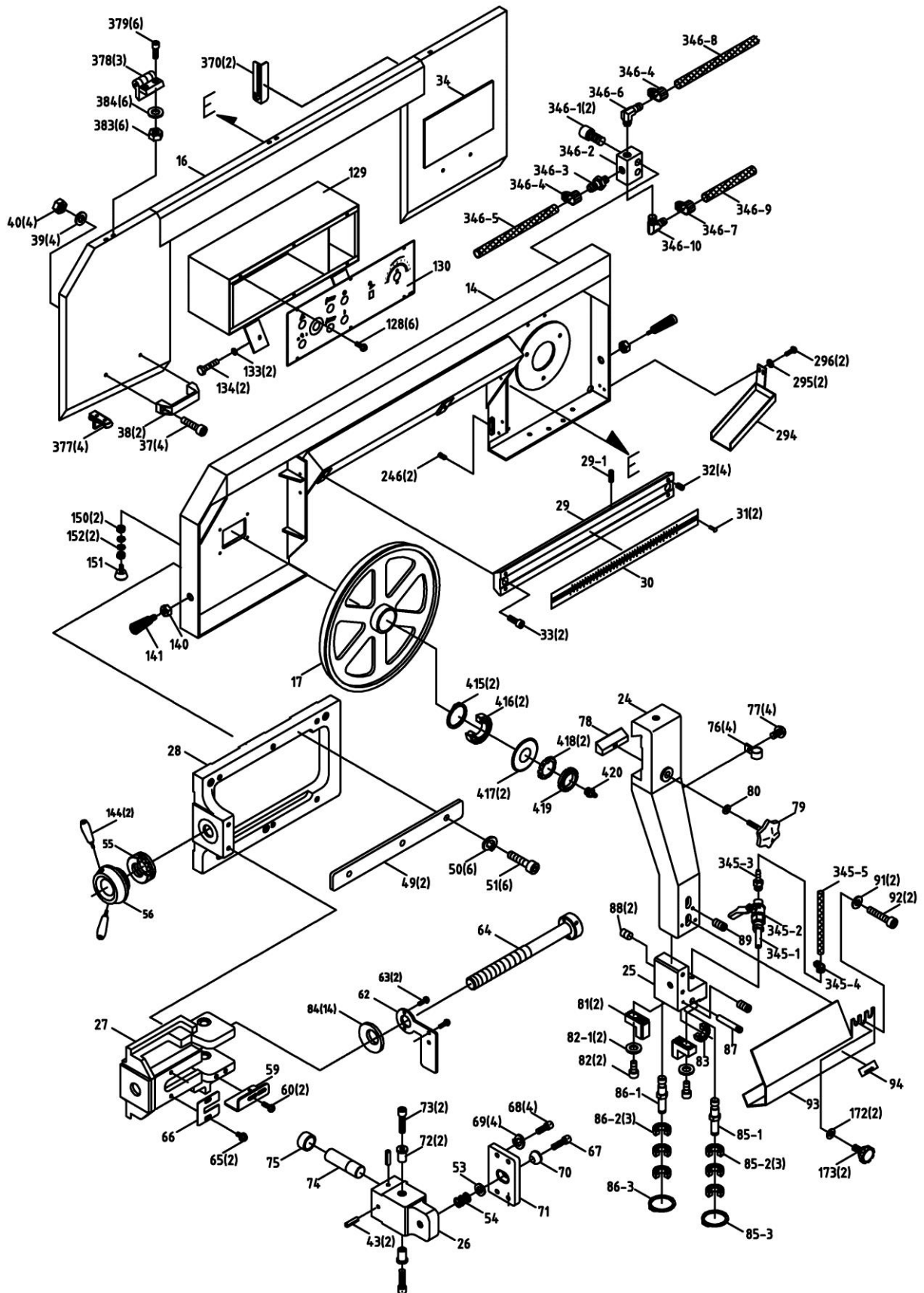
Fax +41 44 806 47 58

www.jettools.com

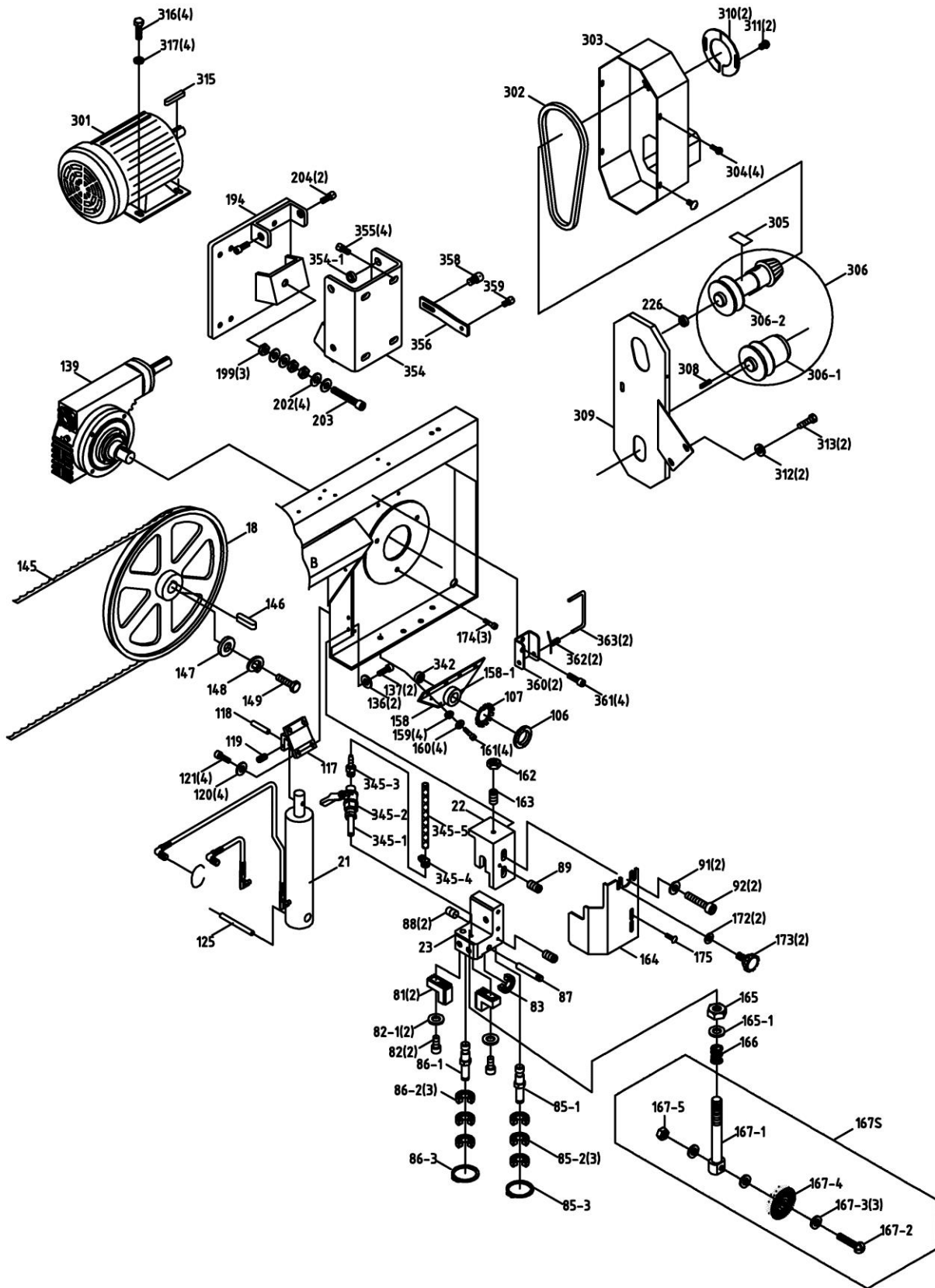
HBS-1319V Breakdown for Stand and Base Assembly



HBS-1319V Breakdown for Bow Assembly



HBS-1319V Breakdown for Bow Assembly



HBS-1319V Part list

Index No.	Part No.	Description	Size	Q'ty
1.....	HBS1319V-1.....	Fluid Collected Plate		1
1-1.....	HBS1319V-1-1	Stand		1
2.....	HBS1319V-2.....	Base		1
2-1.....	HBS1319V-2-1	Hex. Head Screw	M8x1.25x40L	8
2-2.....	HBS1319V-2-2	Washer	5/16"x23x2mm	16
2-3.....	HBS1319V-2-3	Hex. Nut	M8	8
2-4.....	HBS1319V-2-4	Hex. Socket Head Screw	M10x25L	1
2-5.....	HBS1319V-2-5	Washer	M10x27x2.....	2
2-6.....	HBS1319V-2-6	Hex. Nut	M10	1
2-7.....	HBS1319V-2-7	Knob		1
2-8.....	HBS1319V-2-8	Washer	M10x27x2.....	1
2-9.....	HBS1319V-2-9	Carriage Screw	3/8"	1
2-10.....	HBS1319V-2-10	Cross Round Head Screw	M6x10L	12
3.....	HBS1319V-3.....	Hex. Head Screw	M12x50L	4
4.....	HBS1319V-4.....	Hex. Nut	M12	4
6.....	HBS1319V-6.....	Rear Pivot Bracket		1
6-1.....	HBS1319V-6-1	Bushing		1
9.....	HBS1319V-9.....	Vise Jaw Bracket(Front)		1
13.....	HBS1319V-13	Vise Jaw Bracket(Rear)		1
14.....	HBS1319V-14	Body Frame		1
16.....	HBS1319V-16	Blade Back Cover		1
17.....	HBS1319V-17	Idler Wheel Assembly		1
18.....	HBS1319V-18	Drive Wheel		1
21.....	HBS1319V-21	Cylinder Assembly		1
22.....	HBS1319V-22	Arm (Right)		1
23.....	HBS1319V-23	Blade Adjustable (Rear)		1
24.....	HBS1319V-24	Arm (Left)		1
25.....	HBS1319V-25	Bearing Bracket (Left)		1
26.....	HBS1319V-26	Blade Angle Adjusting Bracket		1
27.....	HBS1319V-27	Blade Tension Sliding Plate		1
28.....	HBS1319V-28	Anchor Block		1
29.....	HBS1319V-29	Column		1
30.....	HBS1319V-30	Scale		1
31.....	HBS1319V-31	Rivet	ø2x5L	2
32.....	HBS1319V-32	Hex. Socket Headless Screw	M8x20L	4
33.....	HBS1319V-33	Hex. Socket Head Screw	M12x20L	2
34.....	HBS1319V-34	Blade Select Chart		1
37.....	HBS1319V-37	Hex. Socket Head Screw	M8x20L	4
38.....	HBS1319V-38	Knob		2
39.....	HBS1319V-39	Washer	M8	4
40.....	HBS1319V-40	Hex. Nut	M8	4
43.....	HBS1319V-43	Pin	ø5x45L	2
49.....	HBS1319V-49	Gib		2
50.....	HBS1319V-50	Spring Washer	M8	6
51.....	HBS1319V-51	Hex. Socket Head Screw	M8x45L	6
53.....	HBS1319V-53	Washer	M10	1
54.....	HBS1319V-54	Spring		1
55.....	HBS1319V-55	Bearing	51203	1
56.....	HBS1319V-56	Blade Tension Handle		1
57.....	HBS1319V-57	Bracket		1
58.....	HBS1319V-58	Cross Round Head Screw	M5x10L	2
59.....	HBS1319V-59	Switch Base		1
60.....	HBS1319V-60	Hex. Head Screw	M8x40L	2

Index No.	Part No.	Description	Size	Q'ty
61.....	HBS1319V-61	Washer	8x18x2.0 (M8)	2
62.....	HBS1319V-62	Hex. Nut	M8	2
63.....	HBS1319V-63	Cross Round Head Screw	M4x20L	2
64.....	HBS1319V-64	Leadscrew	1
65.....	HBS1319V-65	Cross Round Head Screw	M5x10L	2
66.....	HBS1319V-66	Tension Indicating Plate	1
67.....	HBS1319V-67	Hex. Socket Head Screw	M10x40L	1
68.....	HBS1319V-68	Hex. Socket Head Screw	M6x15L	4
69.....	HBS1319V-69	Spring Washer	M6	4
70.....	HBS1319V-70	Hemicycle Washer	1
71.....	HBS1319V-71	Washer	1
72.....	HBS1319V-72	Shaft Bushing	2
73.....	HBS1319V-73	Hex. Socket Head Screw	M6x25L	2
74.....	HBS1319V-74	Shaft	1
75.....	HBS1319V-75	Bushing	1
76.....	HBS1319V-76	Hose Clamp	ø12	4
77.....	HBS1319V-77	Cross Round Head Screw	M5x10L	4
78.....	HBS1319V-78	Gib	1
79.....	HBS1319V-79	Blade Adjustable Knob	1
80.....	HBS1319V-80	Washer	M10	1
81.....	HBS1319V-81	Carbide Guide	4
82.....	HBS1319V-82	Hex. Socket Head Screw	M6x20L	4
82-1	HBS1319V-82-1	Washer	6.5x13x0.8 (M6)	4
83.....	HBS1319V-83	Bearing	609ZZ	2
84.....	HBS1319V-84	Disc Spring	14
85.....	HBS1319V-85	Bearing Shaft Assembly	2
85-1	HBS1319V-85-1	Bearing Shaft	2
85-2	HBS1319V-85-2	Bearing	609ZZ	6
85-3	HBS1319V-85-3	C-Retainer Ring	S10	2
86.....	HBS1319V-86	Eccentric Shaft Assembly	2
86-1	HBS1319V-86-1	Eccentric Shaft	2
86-2	HBS1319V-86-2	Bearing	609ZZ	6
86-3	HBS1319V-86-3	C-Retainer Ring	S10	2
87.....	HBS1319V-87	Bearing Pin	2
88.....	HBS1319V-88	Hex. Socket Headless Screw	M5x10L	4
89.....	HBS1319V-89	Hex. Socket Headless Screw	M6x10L	2
91.....	HBS1319V-91	Washer	M8	4
92.....	HBS1319V-92	Hex. Socket Head Screw	M8x25L	4
93.....	HBS1319V-93	Blade Guard (Front)	1
94.....	HBS1319V-94	Label	1
95.....	HBS1319V-95	Hex. Headless Screw	M8x1.25x30L	1
96.....	HBS1319V-96	Hex. Head Screw	M12x1.5Px35L	1
97.....	HBS1319V-97	Spring Washer	ø10.2x3	2
98.....	HBS1319V-98	Washer	ø10.5xø21x2	2
99.....	HBS1319V-99	Bushing	1
100.....	HBS1319V-100	Hex. Headless Screw	M6x1.0x10L	1
101.....	HBS1319V-101	Knob	1
102.....	HBS1319V-102	Washer	ø10.5xø27x3	2
103.....	HBS1319V-103	Hex. Socket Head Screw	M10x25L	4
104.....	HBS1319V-104	Spring Washer	M10	4
105.....	HBS1319V-105	Washer	M10	4
106.....	HBS1319V-106	Nut	2
107.....	HBS1319V-107	Washer	2
109.....	HBS1319V-109	Hex. Socket Head Screw	M10x55L	1
111.....	HBS1319V-111	Bracket	1

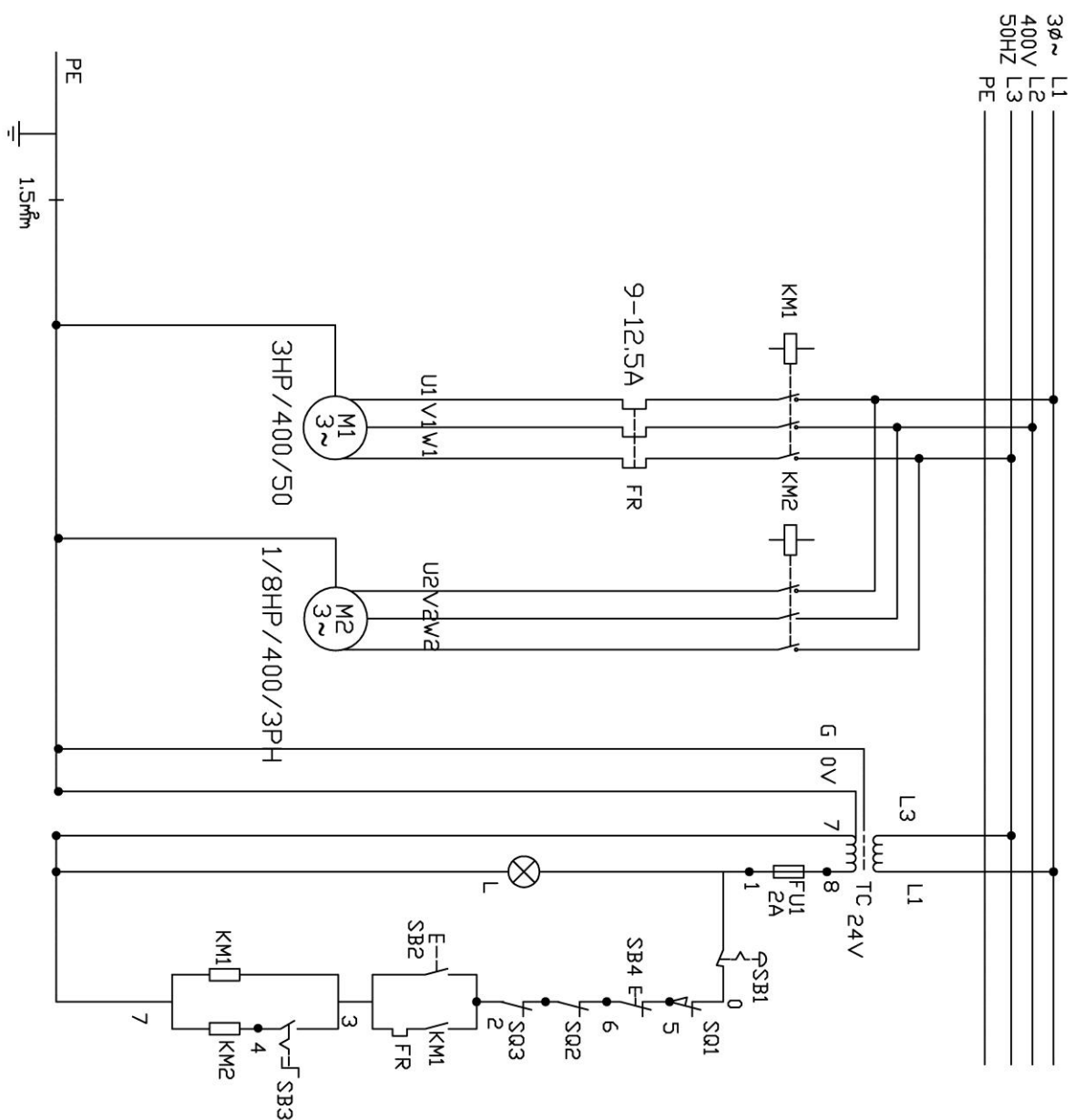
Index No.	Part No.	Description	Size	Q'ty
112.....	HBS1319V-112	Rack Hook		1
113.....	HBS1319V-113	Pin		1
114.....	HBS1319V-114	Hex. Socket Headless Screw	M6x10L	1
115S	HBS1319V-115S	Handwheel assembly		1
117.....	HBS1319V-117	Cylinder Upper Support		1
118.....	HBS1319V-118	Pivot Pin		1
119.....	HBS1319V-119	Hex. Socket Headless Screw	M6x10L	1
120.....	HBS1319V-120	Washer	M8	4
121.....	HBS1319V-121	Hex. Socket Head Screw	M8x20L	4
122.....	HBS1319V-122	Hex. Head Screw	M8x40L	1
123.....	HBS1319V-123	Washer	8.5x18x1.6 (M8)	1
124.....	HBS1319V-124	Hex. Nut	M8	1
125.....	HBS1319V-125	Pivot Pin		1
128.....	HBS1319V-128	Cross Round Head Screw	M5x10L	6
129.....	HBS1319V-129	Control Box		1
130.....	HBS1319V-130	Control Plate		1
133.....	HBS1319V-133	Washer	M6	2
134.....	HBS1319V-134	Hex. Head Screw	M6x10L	2
135.....	HBS1319V-135	Nut		2
136.....	HBS1319V-136	Washer	M8	2
137.....	HBS1319V-137	Hex. Socket Head Screw	M8x20L	2
138.....	HBS1319V-138	Washer		2
139.....	HBS1319V-139	Gear Box Assembly		1
140.....	HBS1319V-140	Hex. Nut	3/8"	2
141.....	HBS1319V-141	Handle		2
142.....	HBS1319V-142	Cross Round Head Screw	M5x10L	2
143.....	HBS1319V-143	Bracket		1
144.....	HBS1319V-144	Knob		2
145.....	HBS1319V-145	Blade	27x0.9x3810 4/6T	1
146.....	HBS1319V-146	Key	7x7x30L	1
147.....	HBS1319V-147	Washer	M10	1
148.....	HBS1319V-148	Spring Washer	M10	1
149.....	HBS1319V-149	Hex. Head Screw	M10x25L	1
150.....	HBS1319V-150	Hex. Nut	M8x1.25.....	2
151.....	HBS1319V-151	Screw	M8x1.25.....	1
152.....	HBS1319V-152	Washer	8.5x18x1.6 (M8)	1
158.....	HBS1319V-158	Bracket		1
158-1	HBS1319V-158-1 ..	Bushing		1
159.....	HBS1319V-159	Spring Washer	M10	4
160.....	HBS1319V-160	Washer	M10	4
161.....	HBS1319V-161	Hex. Socket Head Screw	M10x20L	4
162.....	HBS1319V-162	Hex. Nut	M8	1
163.....	HBS1319V-163	Hex. Socket Headless Screw	M8x25L	1
164.....	HBS1319V-164	Blade Guard (Rear)		1
165.....	HBS1319V-165	Hex. Nut	M10	1
165-1	HBS1319V-165-1 ..	Washer	M10x20x2	1
166.....	HBS1319V-166	Spring		1
167S	HBS1319V-167S ..	Brush Assemble		1
167-1	HBS1319V-167-1 ..	Brush Shaft		1
167-2	HBS1319V-167-2 ..	Cross Round Head Screw	M6x1.0x40L	1
167-3	HBS1319V-167-3 ..	Washer	6.5x13x0.8 (M6)	3
167-4	HBS1319V-167-4 ..	Brush		1
167-5	HBS1319V-167-5 ..	Hex. Nut	M6	1
172.....	HBS1319V-172	Washer	M6	4
173.....	HBS1319V-173	Plum Screw	M6x10L	4

Index No.	Part No.	Description	Size	Q'ty
174.....	HBS1319V-174	Hex. Socket Head Screw	M10x20L	3
175.....	HBS1319V-175	Cross Round Head Screw	M5x8L	1
186.....	HBS1319V-186	Distance Set Rod		1
194.....	HBS1319V-194	Motor Plate		1
199.....	HBS1319V-199	Hex. Nut	M10	3
200.....	HBS1319V-200	Plum Screw		1
202.....	HBS1319V-202	Washer	ø10x27x3.....	4
203.....	HBS1319V-203	Hex. Socket Head Screw	M10x65L	1
204.....	HBS1319V-204	Hex. Socket Head Screw	M12x50L	2
205.....	HBS1319V-205	Rack Support		2
206.....	HBS1319V-206	Axle Base		1
207.....	HBS1319V-207	Hex. Head Screw	M10x30L	2
208.....	HBS1319V-208	Washer	M10	2
209.....	HBS1319V-209	Spring Washer	M8	4
210.....	HBS1319V-210	Hex. Socket Head Screw	M8x20L	4
211.....	HBS1319V-211	Rack		1
212.....	HBS1319V-212	Key	5x5x15L	1
213.....	HBS1319V-213	Acme Screw		1
214.....	HBS1319V-214	Spring Bracket		1
215.....	HBS1319V-215	Washer	M12	1
216.....	HBS1319V-216	Hex. Nut	M12	1
219.....	HBS1319V-219	Eye Bolt		1
220.....	HBS1319V-220	Spring	ø10	1
226.....	HBS1319V-226	Washer Ring		1
230.....	HBS1319V-230	Pivot Shaft		1
231.....	HBS1319V-231	Axle Bushing	35x39x40B	2
233.....	HBS1319V-233	Gap Ring		2
234.....	HBS1319V-234	Meter		1
235.....	HBS1319V-235	Cross Tablet Head Screw	M5x0.8x8L	2
246.....	HBS1319V-246	Hex. Head Screw	M8x20L	2
250.....	HBS1319V-250	Coolant Tank		1
251.....	HBS1319V-251	Coolant Bracket		1
252.....	HBS1319V-252	Screw	M5x15L	4
256-1	HBS1319V-256-1 ..	Bracket		1
256-3	HBS1319V-256-3 ..	Hex. Head Screw	M10x60L	1
256-4	HBS1319V-256-4 ..	Washer	M10	4
256-5	HBS1319V-256-5 ..	Hex. Nut	M10	2
256-6	HBS1319V-256-6 ..	Hex. Head Screw	M8x20L	2
256-8	HBS1319V-256-8 ..	Washer	M8	2
259.....	HBS1319V-259	Hex. Head Screw	M6x10L	1
260.....	HBS1319V-260	Hex. Nut	M6	1
261.....	HBS1319V-261	Filter		1
269.....	HBS1319V-269	Cooling Pump	1/8 HP,400V,3PH	1
270.....	HBS1319V-270	Hex. Head Screw	M6x15L	4
271.....	HBS1319V-271	Spring Washer	M6	4
272.....	HBS1319V-272	Rubber Cushion		1
294.....	HBS1319V-294	Splash Board		1
296.....	HBS1319V-296	Cross Round Head Screw	M6x12L	2
301.....	HBS1319V-301	Motor	3HP,400V,50HZ,3PH	1
302.....	HBS1319V-302	Belt	(1422) 360V	1
303.....	HBS1319V-303	Motor Pulley Cover		1
304.....	HBS1319V-304	Cross Round Head Screw	M5x10L	4
305.....	HBS1319V-305	Speed Label	E=1/30	1
306.....	HBS1319V-306	Spindle Pulley		1
306-1	HBS1319V-306-1 ..	Spindle Pulley	2HP ø24	1

Index No.	Part No.	Description	Size	Q'ty
306-2	HBS1319V-306-2	Variable Speed Pulley	2HP ø24	1
307	HBS1319V-307	Hex. Headless Screw	M6x1.0x10L	1
308	HBS1319V-308	Key	7x7x30L	1
309	HBS1319V-309	Pulley Lower Cover		1
310	HBS1319V-310	Cover		2
311	HBS1319V-311	Cross Round Head Screw	M5x5L	2
312	HBS1319V-312	Washer	M6	2
313	HBS1319V-313	Hex. Head Screw	M6x10L	2
315	HBS1319V-315	Washer	M8	4
316	HBS1319V-316	Hex. Head Screw	M8x15L	4
317	HBS1319V-317	Key	7x7x35L	1
332	HBS1319V-332	Support Rod		1
333	HBS1319V-333	Distance Set Bracket		1
334	HBS1319V-334	Hex. Nut	M10x1.5	1
335	HBS1319V-335	Hex. Head Screw	M10x1.5x25L	1
336	HBS1319V-336	Hex. Head Screw	M10x40L	1
337	HBS1319V-337	Hex. Nut	M10	1
338	HBS1319V-338	Hex. Socket Head Screw	M5x15L	2
339	HBS1319V-339	Lower Adjusting Support		1
342	HBS1319V-342	Gap Ring		1
344	HBS1319V-344	Spray Assembly		1
344-1	HBS1319V-344-1	Straight Connector	PT3/8"xPT3/8"	1
344-2	HBS1319V-344-2	3 Way Connector	PT3/8"xPT3/8"xPT3/8"	1
344-3	HBS1319V-344-3	Straight Connector	PT3/8"x1/2"	1
344-4	HBS1319V-344-4	Micro Control Block	PT3/8"x1/2"	1
344-5	HBS1319V-344-5	Hose Clamp	IDø19	3
344-6	HBS1319V-344-6	Net Tube	ID1/2"x2.8Tx126cm	1
344-7	HBS1319V-344-7	Net Tube	ID1/2"x2.8Tx320cm	1
344-8	HBS1319V-344-8	Spray		1
345S	HBS1319V-345S	Valve Assembly	PT1/8"x1/8"	1
346	HBS1319V-346	3 Way Valve Assembly		1
346-1	HBS1319V-346-1	Hex. Socket Head Screw	M6x30L	2
346-2	HBS1319V-346-2	3 Way Valve		1
346-3	HBS1319V-346-3	Straight Connector	PT1/4"x1/4"	1
346-4	HBS1319V-346-4	Hose Clamp	IDø12	2
346-5	HBS1319V-346-5	Net Tube	ID1/4"x2.2Tx143cm	1
346-6	HBS1319V-346-6	Micro Control Block	PT1/4"x1/4"	1
346-7	HBS1319V-346-7	Hose Clamp	IDø19	1
346-8	HBS1319V-346-8	Net Tube	ID1/4"x2.2Tx64cm	1
346-9	HBS1319V-346-9	Net Tube	ID1/2"x2.8Tx320cm	1
346-10	HBS1319V-346-10	Micro Control Block	PT1/4"x1/2"	1
354	HBS1319V-354	Motor Bracket		1
354-1	HBS1319V-354-1	Bushing		1
355	HBS1319V-355	Hex. Socket Head Screw	M8x20L	4
360	HBS1319V-360	Bracket		2
361	HBS1319V-361	Hex. Socket Head Screw	M6x10L	4
362	HBS1319V-362	Twisted Spring		2
363	HBS1319V-363	Support Rod		2
368	HBS1319V-368	Spring Washer	1/4"x19x1.5	1
370	HBS1319V-370	Bracket		2
377	HBS1319V-377	Ring		4
378	HBS1319V-378	Flexible Plate		3
379	HBS1319V-379	Hex. Socket Head Screw	M6x20L	6
383	HBS1319V-383	Hex. Nut	M6	6
384	HBS1319V-384	Washer	M6	6

Index No.	Part No.	Description	Size	Q'ty
415.....	HBS1319V-415	C-Retainer Ring	R52	2
416.....	HBS1319V-416	Taper Roller Bearing	30205J	2
417	HBS1319V-417	Cover		3
418.....	HBS1319V-418	Star Washer		2
419.....	HBS1319V-419	Nut		1
420.....	HBS1319V-420	Grease Nipple	PT1/8".....	1

HBS-1319V...50000441T 3~400V, 50Hz



FR:Overload
M1:Motor
FU1:fuse
TC:Transformer
SB1:Emergency Stop
SB2:Start Switch
SB3:Pump Switch
SB4:Limit Switch
KM1:Contactor
KM2:Contactor
L:Signal
SQ1:Limit SwitchMET1621
SQ2:Limit SwitchMET1621
SQ3:Limit SwitchMET1624
M2:Colling Pump