

# JET

**HP-  
5A/15A/35A**

**Гидравлический пресс**

**331406**

**331416**

**331431**

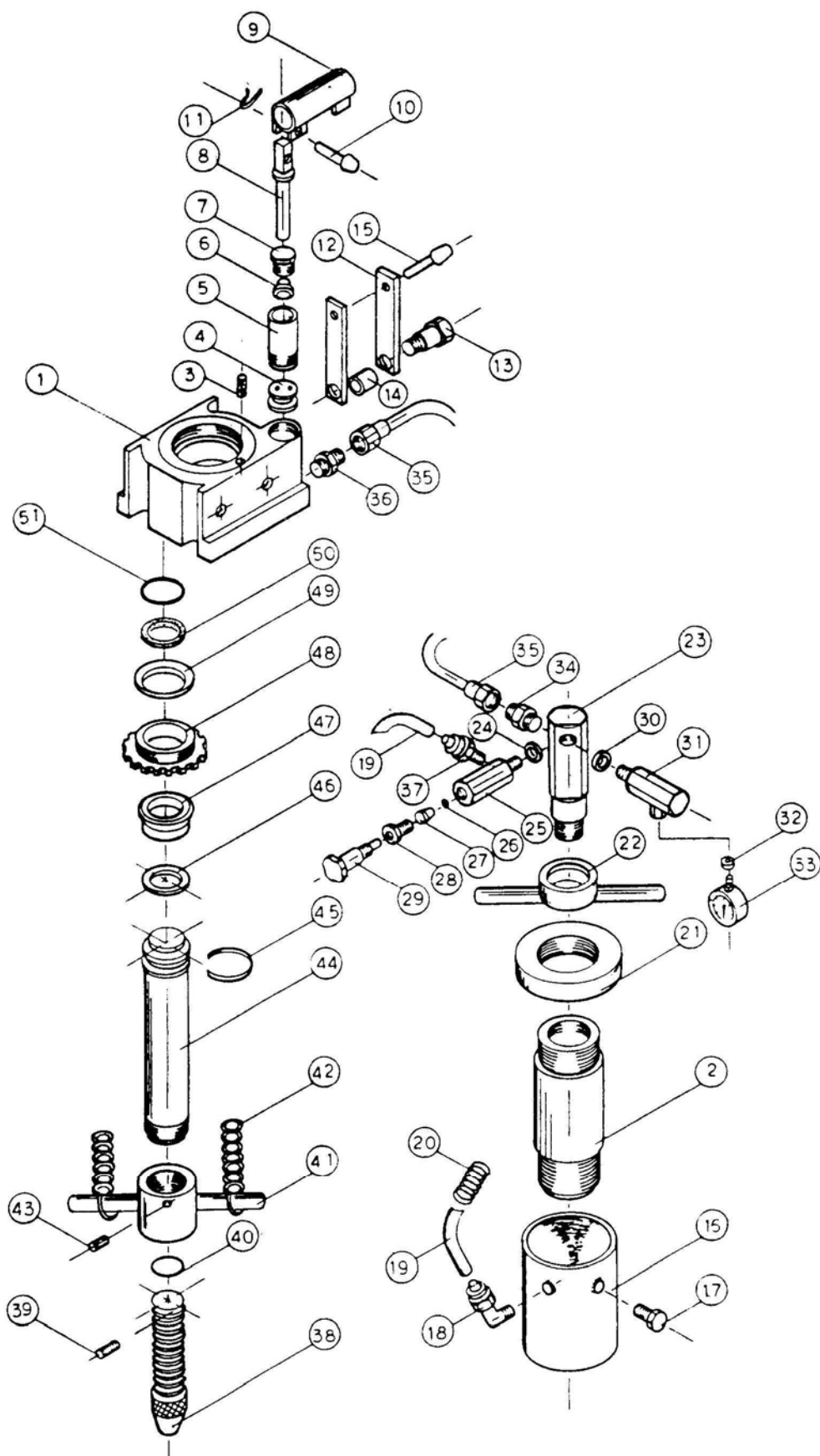
## Список деталей

**WMH Tool Group AG**

Bahnstrasse 24,  
CH – 8603 Schwerzenbach  
[www.wmhtoolgroup.ch](http://www.wmhtoolgroup.ch)  
[info@wmhtoolgroup.ch](mailto:info@wmhtoolgroup.ch)  
Tel +41 (0)44 806 47 48  
Fax +41 (0) 44 806 47 58  
P-331406/331416/331431



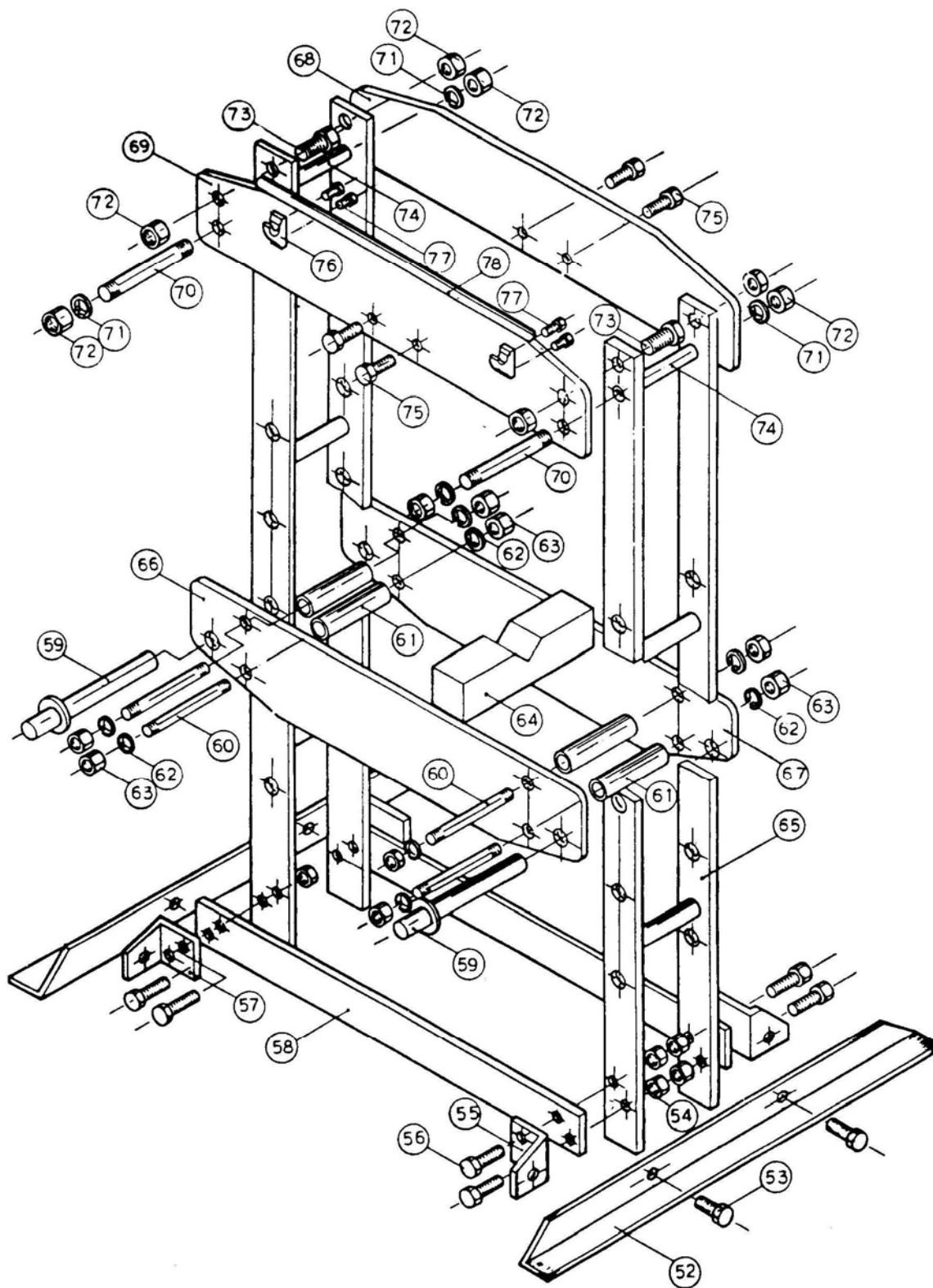
# Монтажная схема: голова в сборе (НР-5А)



## Список деталей: голова в сборе (HP-5A)

№	№ детали	обозначение	размер	кол-во
1	HP5A-1	Hydraulic Base		1
2	HP5A-2	Cylinder		1
3	HP5A-3	Base Filter"		1
4	HP5A-4	Single Action Valve		1
5	HP5A-5	Pump Cylinder		1
6	HP5A-6	Cup Seal **		1
7	HP5A-7	Release Valve Assembly		1
8	HP5A-8	Pin		1
9	HP5A-9	Handle Socket		1
10	HP5A-10	Bolt		1
11	HP5A-11	C-Clip		1
12	HP5A-12	Linking Sleeve		1
13	HP5A-13	Fixed Screw		2
14	HP5A-14	Spacer		1
15	HP5A-15	Bolt		1
16	HP5A-16	Reservoir		1
17	HP5A-17	Hex Filler Plug w/Seal "		2
18	HP5A-18	Brass Tube Connector"		1
19	HP5A-19	Plastic Tube **		1
20	HP5A-20	Spring "		1
21	HP5A-21	Top Base		1
22	HP5A-22	Spring Top Holder		1
23	HP5A-23	Oil Pass Connector		1
24	HP5A-24	Washer **		1
25	HP5A-25	Release Valve Block		1
26	HP5A-26	Steel Ball "		1
27	HP5A-27	Rubber Spacer"		1
28	HP5A-28	Release Valve Assembly		1
29	HP5A-29	Release Valve Spindle		1
30	HP5A-30	Washer**		1
31	HP5A-31	Release Valve Block		1
32	HP5A-32	Washer **		1
33	HP5A-33	Pressure Gauge		1
34	HP5A-34	Male Connect Tube		1
35	HP5A-35	Bronze Tube		1
36	HP5A-36	Male Connector		1
37	HP5A-37	Brass Tube Connector **		1
38	HP5A-38	Extension Screw		1
39	HP5A-39	Stopper Roll Pin		1
40	HP5A-40	Stopper **		1
41	HP5A-41	Connector Post		1
42	HP5A-42	Return Spring		2
43	TS-0270031	Set Screw	5/16 x 3/8	1
44	HP5A-44	Plunger		1
45	HP5A-45	Teflon Support Ring **		1
46	HP5A-46	Support Seal **		1
47	HP5A-47	Cup Seal **		1
48	HP5A-48	Plug Nut		1
49	HP5A-49	Gasket **		1
50	HP5A-50	Oil Absorber **		1
51	HP5A-51	Seal		1

### Монтажная схема: каркас в сборе (НР-5А)

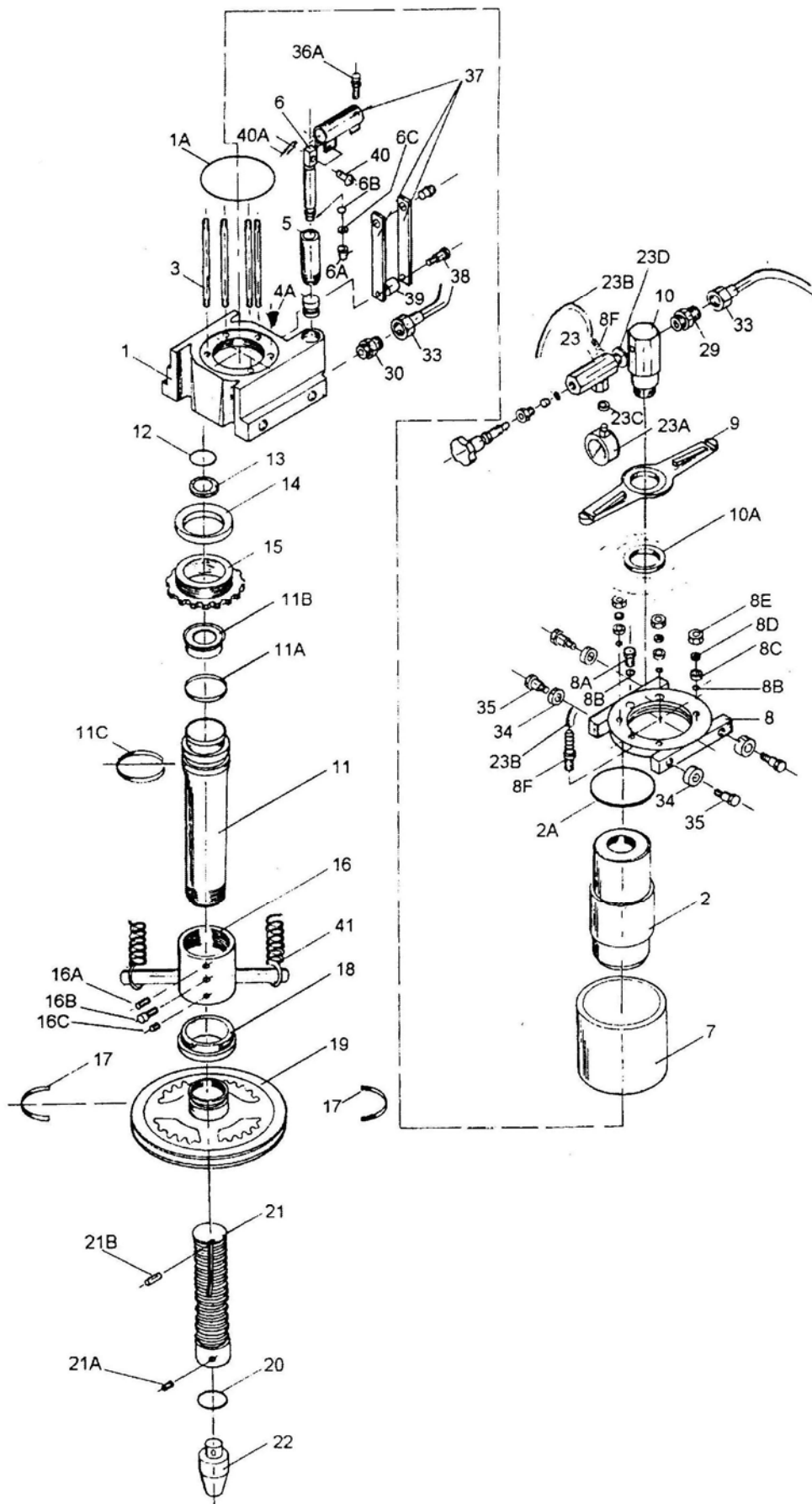


## Список деталей: каркас в сборе (HP-5A)

№	№ детали	обозначение	размер	кол-во
52	HP5A-52	Frame Bracket		2
53	TS-0060051	Hex Cap Bolt	3/8x1	4
54	TS-0561031	Nut	3/8	12
55	HP5A-55	Frame Base Bracket		2
56	TS-0060071	Hex Cap Bolt	3/8 x 1-1/2	8
57	HP5A-57	Frame Base Bracket		2
58	HP5A-58	Lower Frame Support		2
59	HP5A-59	Table Holder		2
60	HP5A-60	Table Spindle		4
61	HP5A-61	Crank Shaft Sleeve		4
62	TS-0720111	Lock Washer	1/2	8
63	TS-0561051	Nut	1/2	8
64	HP5A-64	Bed Plate		1
65	HP5A-65	Main Frame (L-R post)		2
66	HP5A-66	Table Frame (front)		1
67	HP5A-67	Table Frame (rear)		1
68	HP5A-68	Top Frame (rear)		1
69	HP5A-69	Top Frame (front)		1
70	HP5A-70	Frame Spindle		1
71	TS-0720131	Lock Washer	5/8	8
72	TS-0561071	Nut	5/8	8
73	TS-0071011	Hex Cap Bolt	5/8x1-1/2	4
74	HP5A-74	Spindle Sleeve		2
75	TS-0071011	Hex Cap Bolt	5/8 X 1-1/2	4
76	HP5A-76	Handle Holder		2
77	TS-0051031	Hex Cap Bolt	5/16x3/4	4
78	HP5A-78	Pump Handle		1
	HP5A-RK	Repair Kit		1

\*\* Included in Hydraulic Repair Kit

# Монтажная схема: голова в сборе (HP-15A)



## Список деталей: голова в сборе (HP-15A)

№	№ детали	обозначение	размер	кол-во
1	HP15A-01	Hydraulic Base		1
1A	HP15A-01A	Base Seal **		1
2	HP15A-02	Cylinder		1
2A	HP15A-02A	Seal **		1
3	HP15A-03	Support Rod		4
4	HP15A-04	Single Action Valve		1
4A	HP15A-04A	Base Filter**		1
5	HP15A-05	Pump Cylinder		1
6	HP15A-06	Piston		1
6A	HP15A-06A	Cup Seal**		1
6B	HP15A-06B	Seal **		1
6C	HP15A-06C	WiperSeal **		1
7	HP15A-07	Reservoir		1
8	HP15A-08	Top Base		1
8A	HP15A-08A	Hex Filler Plug w/ Seal		1
8B	HP15A-08B	O-Ring **		5
8C	HP15A-08C	Spacer		4
8D	TS-0720091	Spring Washer	3/8	4
8E	TS-0561031	Nut	3/8	4
8F	HP15A-08F	Brass Tube Connector		2
9	HP15A-09	Spring Top Holder		1
10	HP15A-10	Oil Pass Connector		1
10A	HP15A-10A	Spacer		1
11	HP15A-11	Plunger		1
11A	HP15A-11A	Support Seal **		1
11B	HP15A-11B	Cup Seal **		1
11C	HP15A-11C	Teflon Support Ring **		1
12	HP15A-12	Seal**		1
13	HP15A-13	Oil Absorber**		1
14	HP15A-14	Gasket **		1
15	HP15A-15	Plug Nut Fixer		1
16	HP15A-16	Connector Post		1
16A	HP15A-16A	Screw		1
16B	HP15A-16B	Screw		1
16C	HP15A-16C	Screw		1
17	HP15A-17	Hand Wheel Fixer		2
18	HP15A-18	Hand Wheel Spacer		1
19	HP15A-19	Hand Wheel		1
20	HP15A-20	Seal		1
21	HP15A-21	Extension Screw		1
21A	HP15A-21A	Set Screw		1
21B	HP15A-21B	Stopper Roll Pin		1
22	HP15A-22	Press Head		1
23	HP15A-23	Release Valve Block		1
23A	HP15A-23A	Pressure Gauge		1
23B	HP15A-23B	Plastic Tube		1
23C	HP15A-23C	Washer		1
23D	HP15A-23D	Spacer		1
24	HP15A-24	Steel Ball		1
25	HP15A-25	Release Valve Seal **		1

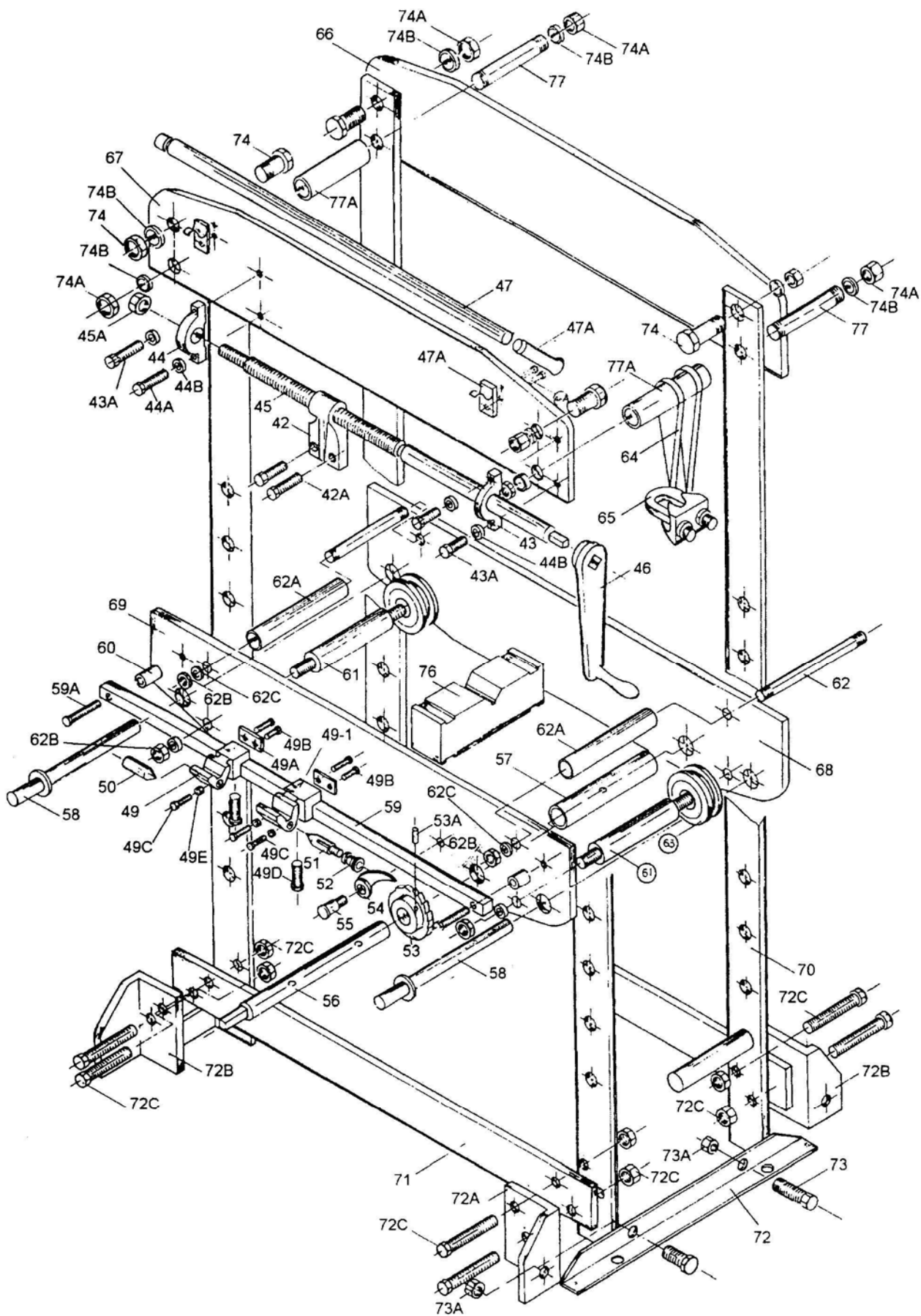
## Список деталей: голова в сборе (HP-15A)

№	№ детали	обозначение	размер	кол-во
26	HP15A-26	Release Valve Nut		1
27	HP15A-27	Release Valve		1
29	HP15A-29	Male Connector		1
30	HP15A-30	Male Connector		1
33	HP15A-33	Bronze Tube		1
34	HP15A-34	Sliding Wheel		4
35	HP15A-35	Locking Screw		4
36A	HP15A-36A	Hand Stopper		1
37	HP15A-37	Complete Handle Sleeve Assembly		1
38	HP15A-38	Fixed Screw		1
39	HP15A-39	Spacer		1
40	HP15A-40	Pin		1
40A	HP15A-40A	Cotter Pin		1
41	HP15A-41	Return Spring		2
	HP15A-RK	Repair Kit (not shown)		1
	HP15A-RKA	Hydraulic Repair Kit (not Shown)		1

\*\* Included in Hydraulic Repair Kit



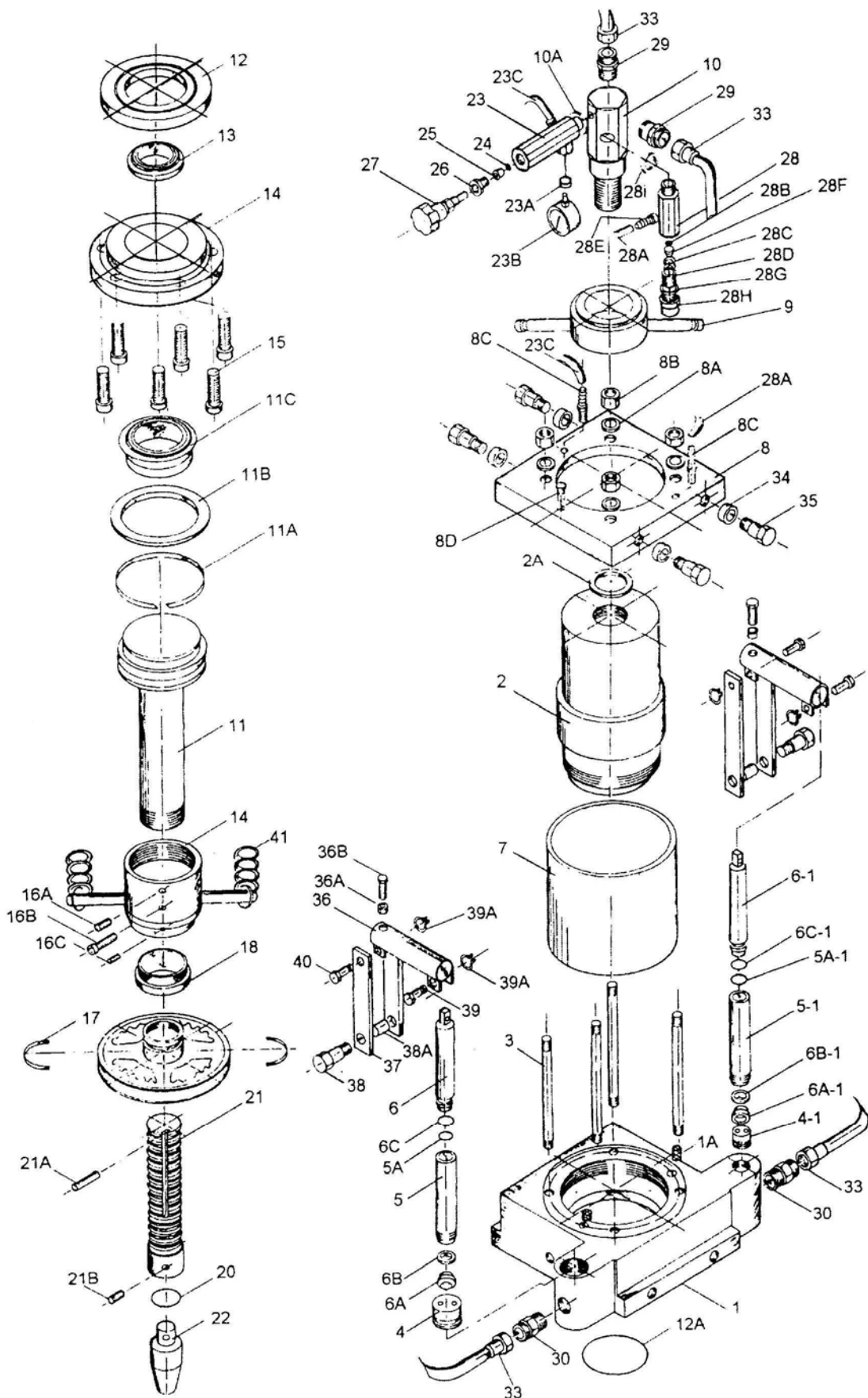
Монтажная схема: каркас в сборе (HP-15A)



## Список деталей: каркас в сборе (HP-15A)

№	№ детали	обозначение	размер	кол-во
42	HP15A-42	Shaft Holder		1
42A	TS-0070011	Hex Head Bolt	1/2x1	2
43	HP15A-43	Rolling Shaft Block w/o Thread		1
43A	TS-0060061	Hex Cap Bolt	3/8x1 1/4	3
44	HP15A-44	Rolling Block		1
44A	TS-0060051	Hex Cap Bolt	3/8x1	1
44B	HP15A-44B	Washer		4
45	HP15A-45	Rolling Shaft		1
45A	HP15A-45A	Nut		2
46	HP15A-46	Hand Crank		1
47	HP15A-47	Pump Handle		1
47A	HP15A-47A	Rubber Grip		1
48	HP15A-48	Handle Holder		2
48A	HP15A-48A	Handle Holder Screw		2
49	HP15A-49	V-BlockBody		1
49-1	HP15A-49-1	V-Block Body		1
49B	HP15A-49B	Body Sliding Plates		2
49C	HP15A-49C	Hex Screw		4
49D	HP15A-49D	Hex Screw		3
49E	HP15A-49E	Stopper		2
50	HP15A-50	Center Tails		2
51	HP15A-51	Adjustable Center-Tail Body		1
52	HP15A-52	Adjustable Center - Tail Knob		1
53	HP15A-53	Crank Gear		1
53A	HP15A-53A	Roll Pin		1
54	HP15A-54	Crank Gear Pawl		1
55	HP15A-55	Pawl Stud Screw		1
56	HP15A-56	Crank Gear Shaft		1
57	HP15A-57	Spindle Sleeve		2
58	HP15A-58	Table Holder		1
59	HP15A-59	Square Bar		1
59A	HP15A-59A	Center Tail Assembly Screw		2
60	HP15A-60	Screw Spacer		2
61	HP15A-61	Cable Sliding Spindle		1
61A	HP15A-61A	Hex Nut		2
62	HP15A-62	Table Spindle		2
62A	HP15A-62A	Crank Shaft Sleeve		1
63	HP15A-63	Cable Slide Wheel		1
64	HP15A-64	Cable		1
65	HP15A-65	Wire Rope Clip		1
66	HP15A-66	Top Frame (rear)		1
67	HP15A-67	Top Frame (front)		2
68	HP15A-68	Table Frame (rear)		1
69	HP15A-69	Table Frame (front)		1
70	HP15A-70	Main Frame (Left/Right Post)		2
71	HP15A-71	Lower Frame Support		2
72	HP15A-72	Frame Bracket		2
72A	HP15A-72A	Frame Base Bracket		2
72B	HP15A-72B	Frame Base Bracket		2
72C	HP15A-72C	Bolt		8
72D	HP15A-72D	Nut		8
73	HP15A-73	Bolt		4
73A	HP15A-73A	Nut		4
74	HP15A-74	Hex Bolt		4
76	HP15A-76	Bed Plate		2
77	HP15A-77	Frame Spindle		2
77A	HP15A-77A	Spindle Sleeve		2

**Монтажная схема: голова в сборе (НР-35А)**



## Список деталей: голова в сборе (HP-35A)

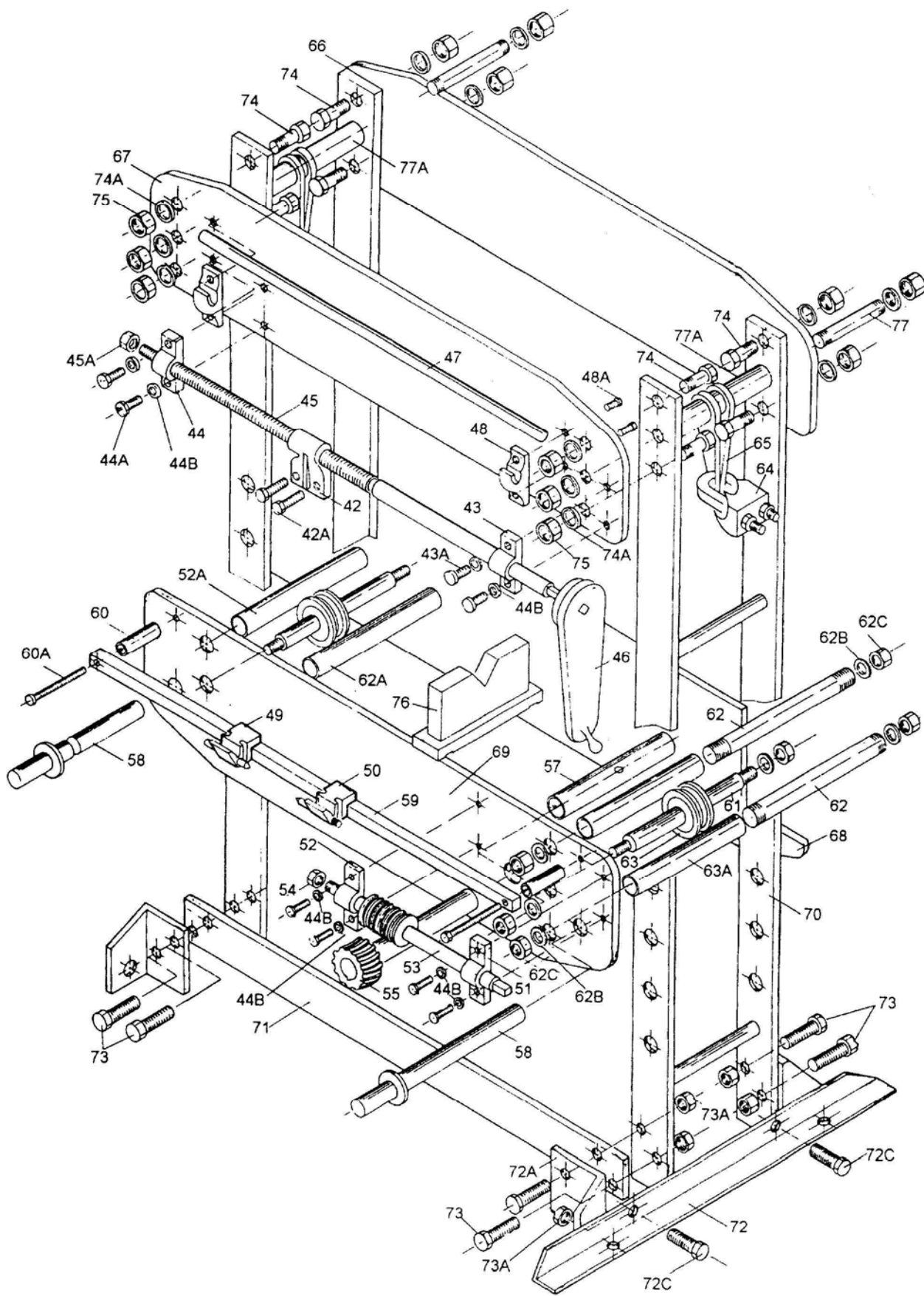
№	№ детали	обозначение	размер	кол-во
1	HP35A-01	Base		1
1A	HP35A-01A	Base Filter"		2
2	HP35A-02	Cylinder		1
2A	HP35A-02A	Spacer		1
3	HP35A-03	Support Rod		4
4	HP35A-04	Single Action Valve		1
4-1	HP35A-04-1	Single Action Valve		1
5	HP35A-05	Pump Cylinder		1
5-1	HP35A-05-1	Pump Cylinder		1
5A	HP35A-05A	O Ring **		1
5A-1	HP35A-05A-1	O Ring **		1
6	HP35A-06	Shaft		1
6-1	HP35A-06-1	Shaft		1
6A	HP35A-06A	Cup Seal **		1
6A-1	HP35A-06A-1	Cup Seal **		1
6B	HP35A-06B	Wiper Seal**		1
6B-1	HP35A-06B-1	Wiper Seal **		1
6C	HP35A-06C	O Ring **		1
6C-1	HP35A-06C-1	O Ring **		1
7	HP35A-07	Reservoir		1
8	HP35A-08	Hydraulic Base Top		1
8A	TS-0720111	Lock Washer	1/2	4
8B	TS-0561051	Hex Nut	1/2	4
8C	HP35A-08C	Brass Tube Connector		3
8D	HP35A-08D	Hex Filler Plug W/ Seal		1
9	HP35A-09	Connector Post		1
10	HP35A-10	Oil Pass Connector		1
10A	HP35A-10A	Spacer		1
11	HP35A-11	Plunger		1
11A	HP35A-11A	Teflon Supporting Ring **		1
11B	HP35A-11B	Spacer Ring		1
11C	HP35A-11C	Cup Seal**		1
12	HP35A-12	Brass Gasket		1
12A	HP35A-12A	O Ring **		1
13	HP35A-13	Seal**		1
14	HP35A-14	Plunger Plate w/ Gasket		1
15	TS-0209061	Socket Head Cap Screw	3/8-1 1/4	6
16	HP35A-16	Connector Post		1
16A	HP35A-16A	Socket Set Screw		1
16B	HP35A-16B	Set Screw		1
16C	HP35A-16C	Socket Set Screw		1
17	HP35A-17	Handle Wheel Retainer Clips		2
18	HP35A-18	Handle Wheel Spacer		1
19	HP35A-19	Handle Wheel		1
20	HP35A-20	Seal		1
21	HP35A-21	Extension Screw		1
21A	HP35A-21A	Stopper Roll Pin		1
21B	HP35A-21B	Set Screw		1
22	HP35A-22	Press Head		1
23	HP35A-23	Release Valve Block		1
23A	HP35A-23A	Spacer		1
23B	HP35A-23B	Pressure Gauge		1
23C	HP35A-23C	Plastic Tube		1
24	HP35A-24	Steel Ball		1

## Список деталей: голова в сборе (HP-35A)

№	№ детали	обозначение	размер	кол-во
25	HP35A-25	Release Valve Seal **		1
26	HP35A-26	Release Valve Nut		1
27	HP35A-27	Release Valve		1
28	HP35A-28	Safety Valve Block		1
28A	HP35A-28A	Plastic Tube		1
28B	HP35A-28B	Steel Ball		1
28C	HP35A-28C	Safety Spring		1
28D	HP35A-28D	Safety Valve Set Screw		1
28E	HP35A-28E	Brass Tube Connector		1
28F	HP35A-28F	Release Valve Seal **		1
28G	HP35A-28G	Washer		1
28H	HP35A-28H	Hex Nut		1
28I	HP35A-28I	Spacer		1
29	HP35A-29	Male Connector		2
30	HP35A-30	Male Connector		2
33	HP35A-33	Bronze Tube		2
34	HP35A-34	Sliding Wheel		4
35	HP35A-35	Hex Locking Bolt		4
36	HP35A-36	Handle Socket		2
36A	TS-0561031	Nut	3/8	2
36B	TS-0060051	Hex Head Screw	3/8-16x1	2
37	HP35A-37	Linking Sleeve		4
38	HP35A-38	Bottom	Fixed Bolt	2
38A	HP35A-38A	Spacer		2
39	HP35A-39	Bolt		2
39A	HP35A-39A	C-Clip		4
40	HP35A-40	Bolt		2
41	HP35A-41	Return Spring		2
	HP35A-RK	Hydraulic Repair Kit (not show)		1

\*\* Included in Repair Kit

# Монтажная схема: каркас в сборе (HP-35A)



## Список деталей: каркас в сборе (HP-35A)

№	№ детали	обозначение	размер	кол-во
42	HP35A-42	Shaft Holder		1
42A	HP35A-42A	Hex Cap Head Bolt		2
43	HP35A-43	Rolling Shaft Block		1
43A	TS-0060061	Hex Head Bolt	3/8x1 1/4	2
44	HP35A-44	Rolling Shaft Block		1
44A	TS-0060051	Hex Cap Bolt	3/8-16x1	2
44B	TS-0680041	Washer	3/8	8
45	HP35A-45	Sliding Shaft		1
45A	TS-0561072	Nut	5/8-18	1
46	HP35A-46	Hand Crank		1
47	HP35A-47	Handle		1
48	HP35A-48	Handle Holder		2
48A	TS-0051051	Hex Cap Bolt	5/16x1	4
49	HP35A-49	Center Post Assy. (left)		1
50	HP35A-50	Center Post Assy. (right)		1
51	HP35A-51	Fixed Holder		1
52	HP35A-52	Shaft Fixed Block		1
53	HP35A-53	Drive Gear Shaft Assembly		1
54	HP35A-54	Hex Nut		1
55	HP35A-55	Worm Gear / shaft Assembly		1
56	TS-0060051	Hex Head Screw	3/8x1	4
57	HP35A-57	Spacer Sleeve		1
58	HP35A-58	Table Holder Pin		1
59	HP35A-59	Square Bar		1
60	HP35A-60	Screw Spacer		2
60A	TS-0060151	Hex Cap Bolt	3/8x3 1/2	2
61	HP35A-61	Slide Wheel Shaft		2
62	HP35A-62	Table Bolt		4
62A	HP35A-62A	Spindle Sleeve		8
62B	TS-0720131	Lock Washer	5/8	12
62C	TS-0561071	Hex Nut	5/8	12
63	HP35A-63	Cable Slide Wheel		2
64	HP35A-64	Wire Rope Clip		2
65	HP35A-65	Cable		1
66	HP35A-66	Top Frame (rear)		1
67	HP35A-67	Top Frame (front)		1
68	HP35A-68	Table Frame (rear)		1
69	HP35A-69	Table Frame (front)		1
70	HP35A-70	Main Frame		2
71	HP35A-71	Lower Frame Support		2
72	HP35A-72	Base Frame Bracket		2
72A	HP35A-72A	Frame Bracket (left)		2
72B	HP35A-72B	Frame Bracket (right)		2
72C	TS-0071011	Hex Cap Bolt	5/8x1 1/2	4
73	TS-0071031	Hex Cap Bolt	5/8x2	8
73A	TS-0561071	Nut	5/8	12
74	HP35A-74	Hex Head Bolt	3/4x2	8
74A	TS-0720141	Lock Washer	3/4	12
75	TS-0561081	Nut	3/4	12
76	HP35A-76	V-Block Bed Plate		2
77	HP35A-77	Top Link Bolt		2
77A	HP35A-77A	Spacer Sleeve		2