

J E T

JBG-10A

BENCH GRINDER

577103M

230/50/1

**PARTS LIST
ERSATZTEILLISTE
LISTE DE PIECES**

WMH Tool Group AG

Bahnstrasse 24, CH – 8603 Schwerzenbach
www.wmhtoolgroup.ch; info@wmhtoolgroup.ch

Tel +41 (0) 44 806 47 48

Fax +41 (0) 44 806 47 58



P-577103M 07/06

Parts and Assembly

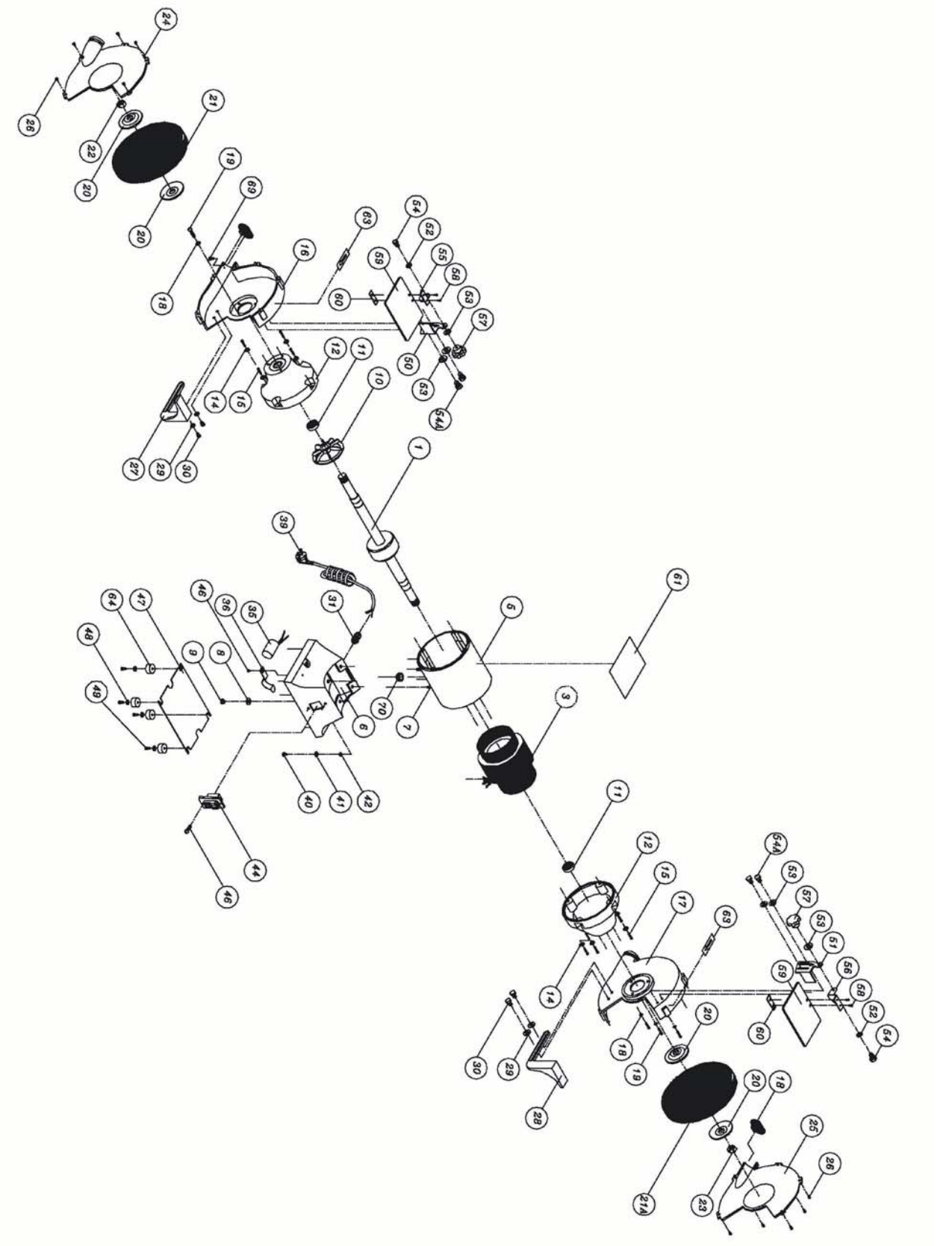
Parts List

Index No	Part No	Description	Size	Qty
1	JBG10A-02PE	Shaft and Rotor Assy		1
3	JBG10A-03E	Stator Assy		1
5	JBG10A-05	Motor Housing		1
6	JBG10A-06E	Base		1
7	JBG10A-07	Cross Screw	5/16"-18 x 1"	4
8	TS-0720081	Lock Washer	5/16"	4
9	TS-0561021	Hex Nut	5/16"-18	4
10	JBG10A-10	Fan		1
11	BB-6206ZZ	Ball Bearing (JBG-10A)	6206ZZ	2
12	JBG10A-12	Cover		2
14	TS-0720071	Lock Washer	1/4"	8
15	JBG10A-15	Screw	1/4"-20 x 7/8"	8
16	JBG10A-16E	Inner Wheel Guard - left		1
17	JBG10A-17E	Inner Wheel Guard - right		1
18	TS-0720081	Lock Washer	5/16"	8
19	JBG10A-19	Cross Screw	5/16"-18x3/4"	8
20	JBG10A-20	Wheel Flange	1 I.D	4
21	576228	Grinding Wheel	10", 46G	1
21A	576226	Grinding Wheel	10", 24G	1
22	JBG10A-22	Nut - left		1
23	JBG10A-23	Nut - right		1
24	JBG10A-24	Outer Wheel Guard - left		1
25	JBG10A-25	Outer Wheel Guard - right		1
26	JBG6A-26	Cross Screw	1/4"-20x1/2"	10
27	JBG10A-27	Tool Rest - left		1
28	JBG10A-28	Tool Rest - right		1
29	TS-0680031	Flat Washer	5/16"	4
30	TS-0051031	Hex Cap Bolt	5/16"-18x3/4"	4
31	JBG10A-31E	Clamp	PG11	1
35	JBG10A-35	Condenser	400V, 40uf	1
36	JBG10A-36E	Bracket		1
39	JBG10A-39E	Power Cord		1
42	JBG10A-42	Clip		1
44	JBG10A-44E	Switch		1
46	TS-081C032	Screw	#10-24x1/2"	3
47	JBG10A-47	Base Plate		1
48	TS-0680021	Flat Washer	1/4"	4
49	JBG10A-49	Cross Screw	1/4"-20x1/2"	4
50	JBG10A-50	Eye Shield Plate - left		1
51	JBG10A-51	Eye Shield Plate - right		1
52	TS-0720071	Lock Washer	1/4"	2
53	TS-0680021	Flat Washer	1/4"	6
54	JBG10A-54	Screw	1/4-20x1/2	2
54A	JBG6A-54	Cross Screw	1/4"-20x3/8"	4
55	JBG10A-55	Eye Shield Plate - left		1
56	JBG10A-56	Eye Shield Plate - right		1
57	JBG6A-57	Lock Knob	1/4"	2

Parts List

Index No	Part No	Description	Size	Qty
58	JBG6A-58	Cross Screw	3/16"x3/8"	4
59	JBG10A-59	Eye Shield		2
	JBG10A-59A	Eye Shield Assembly		1
60	JBG10A-60	Eye Shield Bracket Plate		2
61	JBG10A-61E	Identification Label		1
63	JBG6A-63	Direction Label		2
64	JBG10A-64	Rubber Foot		4
67	JBG10A-67E	Safety Guard		1
68	JBG10A-68E	Safety Guard		1
69	JBG10A-69E	Cross Screw	#8-32x3/8"	4
70	JBG10A-70E	Cord Protector		1

Assembly Drawing



JBG-10A
577103M

230/50/1

	colour of strands	Litzenfarben	couleur des cordons
BK	black	schwarz	noir
WH	white	weiß	blanc
BU	blue	blau	bleu
YE	yellow	gelb	jaune
RD	red	rot	rouge
BN	brown	braun	brun
GY	grey	grau	gris
GNYE	green-yellow	grün-gelb	vert-jaune
OG	orange	orange	orange
VT	violet	violett	violet

	meaning of symbol	Bedeutung der Zeichen	interprétation
M	motor	Motor	moteur
S	switch	Schalter	interrupteur
C	condenser	Kondensator	condensateur
E	electronic unit	Elektronik Einheit	unité électronique
F	fuse	Sicherung	fusible
RS	reversing switch	Drehrichtungsschalter	commu. droite/gauche
CS	centrifugal switch	Fliehkraftschalter	déclencheur centrifuge
OL	overload cut-off	Überlastschalter	déclencheur surcharge
LS	limit switch	Positionsendschalter	micro

