

J E T

JBG-150
JBG-200

BENCH GRINDER

577901M/ 577902M
230/50/1

PARTS LIST
ERSATZTEILLISTE
LISTE DE PIECES

WMH Tool Group AG

Bahnstrasse 24, CH – 8603 Schwerzenbach
www.wmhtoolgroup.ch; info@wmhtoolgroup.ch

Tel +41 (0) 44 806 47 48

Fax +41 (0) 44 806 47 58

P-577901M, 577902M 07/06



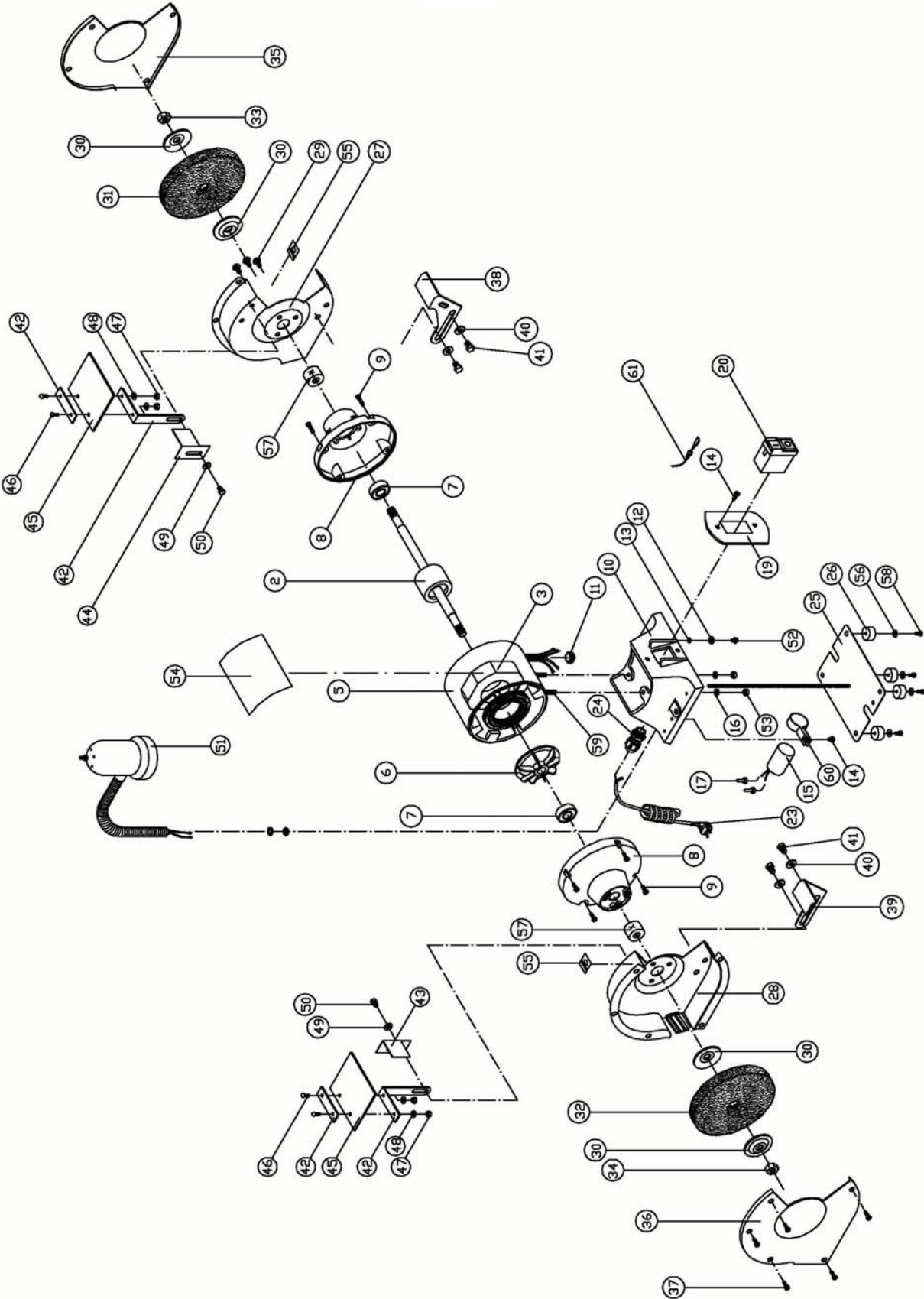
Parts List – Dual Bench Grinder

| Index No. | Part No. | Description | Size | Qty. |
|-----------|------------|---------------------------|----------------|------|
| 2 | JBG150-02E | Rotor Assembly | Ø53x35x Ø 16 | 1 |
| | JBG200-02E | Rotor Assembly | Ø 57x50x Ø 19 | 1 |
| 3 | JBG150-03E | Stator Assembly | Ø 111x Ø 53x35 | 1 |
| | JBG200-03E | Stator Assembly | Ø 123x Ø 57x50 | 1 |
| 5 | JBG150-05 | Motor Housing | | 1 |
| | JBG200-05 | Motor Housing | | 1 |
| 6 | JBG150-06 | Plastic Fan | | 1 |
| | JBG200-06 | Plastic Fan | | 1 |
| 7 | BB-6202ZZ | Ball Bearing | 6202ZZ | 2 |
| | BB-6203ZZ | Ball Bearing | 6203ZZ | 2 |
| 8 | JBG150-08 | Aluminum Cover | | 2 |
| | JBG200-08 | Aluminum Cover | | 2 |
| 9 | JBG150-09 | Cross Head Screw W/washer | 3/16"x5/8" | 8 |
| 10 | JBG150-10E | Base | 1/4" GL | 1 |
| 11 | JBG150-11 | Strain Relief | 18mm | 1 |
| 12 | JBG150-12 | Copper washer | 5mm | 1 |
| 13 | JBG150-13 | Tooth washer | M5 | 1 |
| 14 | JBG150-14 | Cross Head Screw W/washer | 3/16" x 1/4" | 3 |
| 15 | JBG150-15E | Running Capacitor | 8UF, 400V | 1 |
| | JBG200-15E | Running Capacitor | 16UF, 400V | 1 |
| 16 | TS-0720071 | Lock Washer | 1/4" | 2 |
| 17 | JBG150-17E | Terminals | | 4 |
| 19 | JBG150-19E | Switch Plate | | 1 |
| 20 | JBG150-20E | Switch | | 1 |
| 23 | JBG150-23E | Power Cord | | 1 |
| | JBG200-23E | Power Cord | | 1 |
| 24 | JBG150-24 | Wire Clamp | PG9 | 1 |
| 25 | JBG150-25 | Base Plate | 1/4 GL | 1 |
| 26 | JBG150-26 | Rubber Foot | | 4 |
| 27 | JBG150-27E | Inner Wheel Guard (Right) | 1/4 C Type | 1 |
| | JBG200-27E | Inner Wheel Guard (Right) | 1/2 C Type | 1 |
| 28 | JBG150-28E | Inner Wheel Guard (Left) | 1/4 C Type | 1 |
| | JBG200-28E | Inner Wheel Guard (Left) | 1/2 C Type | 1 |
| 29 | JBG150-29 | Cross Head Screw W/washer | 1/4X3/8 | 6 |
| 30 | JBG150-30 | Flange Washer | 1/2" | 4 |
| | JBG200-30 | Flange Washer | 5/8" | 4 |
| 31 | JBG150-31 | Grinding Wheel | 6", 36G | 1 |
| | 576223 | Grinding Wheel | 8", 36G | 1 |
| 32 | JBG150-32 | Grinding Wheel | 6", 60G | 1 |
| | 576225 | Grinding Wheel | 8", 60G | 1 |
| 33 | JBG150-33 | Nut (Right) | 1/2" | 1 |
| | JBG200-33 | Nut (Right) | 5/8" x 23 | 1 |
| 34 | JBG150-34 | Nut (Left) | 1/2" | 1 |
| | JBG200-34 | Nut (Left) | 5/8" x 23 | 1 |
| 35 | JBG150-35 | Outer Wheel Guard (Right) | 1/4 C Type | 1 |
| | JBG200-35 | Outer Wheel Guard (Right) | 1/2 C Type | 1 |
| 36 | JBG150-36 | Outer Wheel Guard (Left) | 1/4 C Type | 1 |
| | JBG200-36 | Outer Wheel Guard (Left) | 1/2 C Type | 1 |

Parts List – Dual Bench Grinder

| Index No. | Part No. | Description | Size | Qty. |
|-----------|------------|----------------------------------|-----------------|------|
| 37 | TS-0810012 | Machine Screw | #10-24 x 1/4" | 10 |
| 38 | JBG150-38 | Tool Rest (Right) | 1/3HP, 2mm | 1 |
| | JBG200-38 | Tool Rest (Right) | 1/2HP, 3mm | 1 |
| 39 | JBG150-39 | Tool Rest (Left) | 1/3HP, 2mm | 1 |
| | JBG200-39 | Tool Rest (Left) | 1/2HP, 3mm | 1 |
| 40 | TS-0680031 | Flat Washer | 5/16" | 4 |
| 41 | JBG150-41 | Hex Cap Screw (only for JBG-150) | 5/16"-18 x 3/8" | 4 |
| | TS-0051011 | Hex Cap Screw (only for JBG-200) | 5/16"-18 x 1/2" | 4 |
| 42 | JBG150-42 | Eye Shield Bracket/Plate | 1/4 | 2 |
| 43 | JBG150-43 | Spark Arrestor (Left) | 1/4 | 1 |
| 44 | JBG150-44 | Spark Arrestor (Right) | 1/4 | 1 |
| 45 | JBG150-45 | Eye Shield | 1/4 UL | 2 |
| 46 | TS-081B032 | Machine Screw | #8-32 x 1/2" | 4 |
| 47 | TS-0560061 | Hex Nut | #8-32 | 4 |
| 48 | TS-0692031 | Flat Washer | #8 | 4 |
| 49 | TS-0680021 | Flat Washer | 1/4" | 2 |
| 50 | JBG150-50 | Hex Bolt | 1/4"-20 x 3/8" | 2 |
| 51 | JBG150-51E | Work Light Assembly | | 1 |
| 52 | JBG200-52 | Cross Head Screw w/Washer | #10-24 x 1/4" | 1 |
| 53 | TS-0570011 | Hex Nut | 1/4"-20 | 2 |
| 54 | JBG150-54E | I.D. Label | | 1 |
| | JBG200-54E | I.D. Label | | 1 |
| 55 | JBG150-55 | Direction Label | | 2 |
| 56 | TS-0680011 | Flat Washer | 3/16" | 4 |
| 57 | JBG200-57 | Bushing (only for JBG-200) | | 2 |
| 58 | TS-081C022 | Machine Screw | #10-24 x 3/8" | 4 |
| 59 | JBG150-59 | Cross Head Screw | 1/4"-20x7/8" | 2 |
| 60 | JBG150-60E | Holder | | 1 |
| | JBG20-60E | Holder | | 1 |
| 61 | JBG150-61E | Extension line | | 2 |

Assembly Drawing



JBG-150 / JBG-200
577901M/ 577902M

230/50/1

| | colour of strands | Litzenfarben | couleur des cordons |
|------|-------------------|--------------|---------------------|
| BK | black | schwarz | noir |
| WH | white | weiß | blanc |
| BU | blue | blau | bleu |
| YE | yellow | gelb | jaune |
| RD | red | rot | rouge |
| BN | brown | braun | brun |
| GY | grey | grau | gris |
| GNYE | green-yellow | grün-gelb | vert-jaune |
| OG | orange | orange | orange |
| VT | violet | violett | violet |

| | meaning of symbol | Bedeutung der Zeichen | interprétation |
|----|--------------------|------------------------|------------------------|
| M | motor | Motor | moteur |
| S | switch | Schalter | interrupteur |
| C | condenser | Kondensator | condensateur |
| E | electronic unit | Elektronik Einheit | unité électronique |
| F | fuse | Sicherung | fusible |
| RS | reversing switch | Drehrichtungsschalter | commu. droite/gauche |
| CS | centrifugal switch | Fliehkraftschalter | déclencheur centrifuge |
| OL | overload cut-off | Überlastschutzschalter | déclencheur surcharge |
| LS | limit switch | Positionsendschalter | micro |

