

# **J E T**

**JMD-15**

**Mill / Drill Center**

**350017M**

**230/50/1**

**PARTS LIST**

**ERSATZTEILLISTE**

**LISTE DE PIECES**

**WMH Tool Group AG**

Bahnstrasse 24, CH – 8603 Schwerzenbach

[www.wmhtoolgroup.ch](http://www.wmhtoolgroup.ch); [info@wmhtoolgroup.ch](mailto:info@wmhtoolgroup.ch)

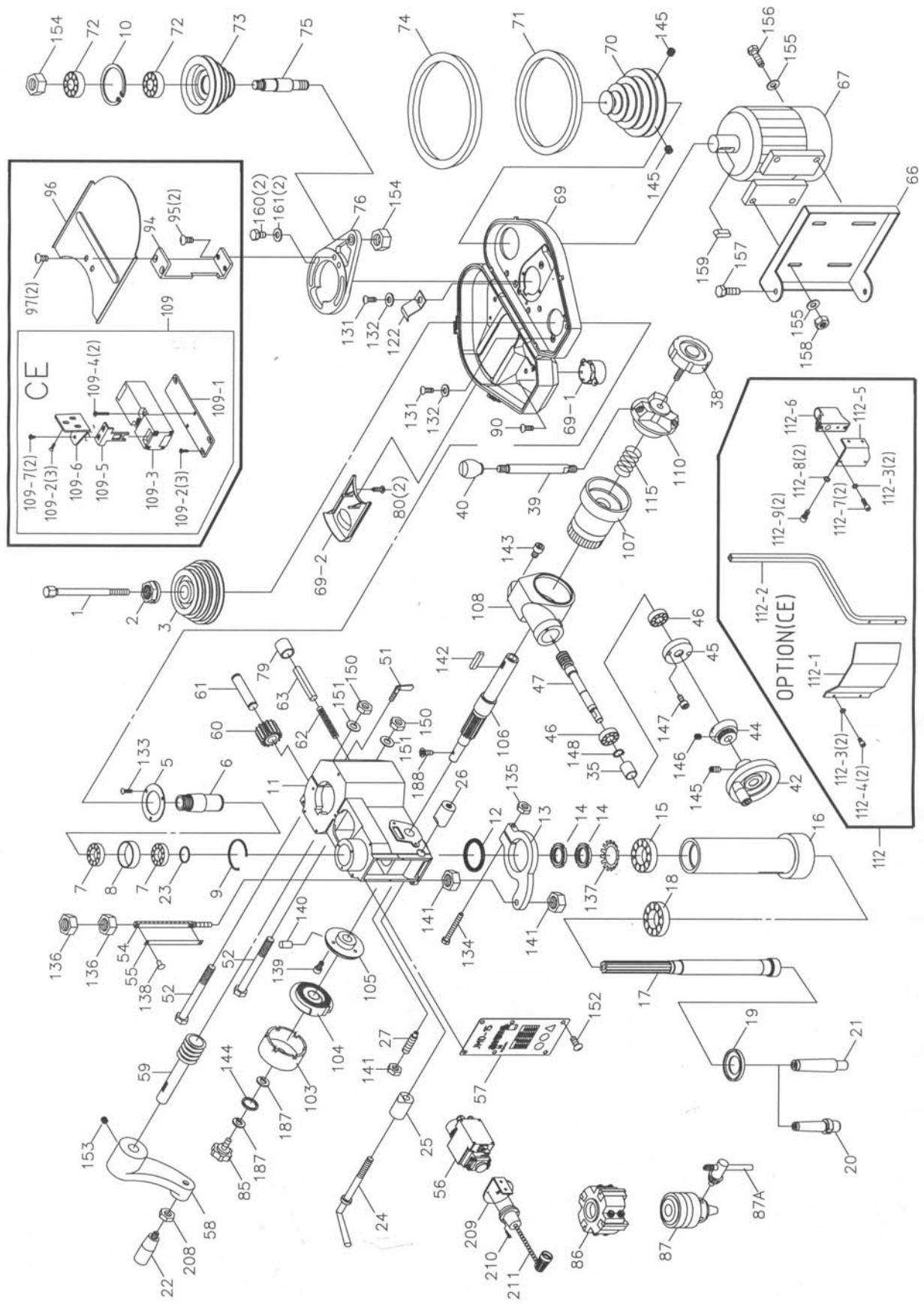
Tel +41 (0) 44 806 47 48

Fax +41 (0) 44 806 47 58



M-350017M 05/06

# JMD-15 Head Assembly



**Parts List for JMD-15 Mill/Drill  
Head Assembly**

Index No.	Part No.	Description	Size	Qty.
1.....	JMD15-001E	Drawbar	M12	1
2.....	JMD15-002	Spindle Lock Nut		1
3.....	JMD15-003	Spindle Pulley		1
5.....	JMD15-005	Outer Bearing Plate		1
6.....	JMD15-006	Spindle Taper Sleeve		1
7.....	BB-6007ZZ	Ball Bearing	6007ZZ	2
8.....	JMD15-008	Bearing Spacer		1
9.....	JMD15-009	C-Ring		1
10.....	JMD15-010	C-Ring		1
11.....	JMD15-011	Head		1
12.....	JMD15-012	Rubber Flange		1
13.....	JMD15-013	Feed Base		1
14.....	JMD15-014	Lock Nut		2
15.....	BB-30205	Taper Roller Bearing	30205	1
16.....	JMD15-016	Rack Sleeve		1
17.....	JMD15-017	Spindle Shaft		1
18.....	BB-30206	Taper Roller Bearing	30206	1
19.....	JMD15-019	Bearing Cap		1
20.....	JMD15-020	Cutting Arbor		1
21.....	JMD15-021	Chuck Arbor	MT3XB16	1
22.....	JMD15-022	Handle		1
23.....	JMD15-023	Retainer Ring		1
24.....	JMD15-024	Lock Handle		1
25.....	JMD15-025	Fixed Collar		1
26.....	JMD15-026	Fixed Collar Thread		1
27.....	JMD18-027	Screw key	3/8"	1
35.....	JMD18-035	Bearing Spacer		1
38.....	JMD18-038	Lock Bolt w/ Knob		1
39.....	JMD18-039	Handle Rod		3
40.....	JMD18-040	Knob		3
42.....	JMD18-042	Feed Handle Wheel		1
44.....	JMD18-044	Micro Adjusting Indicator		1
45.....	JMD18-045	Worm Cover		1
46.....	BB-6202Z	Ball Bearing	6202Z	2
47.....	JMD18-047	Worm Shaft		1
51.....	JMD18-051	Leaf Screw		1
52.....	JMD15-052	Head Lock Bolt	1/2"x7"	2
54.....	JMD15-054	Graduated Rod and Dial Assembly		1
55.....	JMD15-054	Depth Scale		1
56.....	JMD15-056E	Switch	KOA2M	1
.....	JMD15-056PCE	Power cord (not shown)	H07RN-F	1
57.....	JMD15-057	Name Plate		1
58.....	JMD15-058	Head Handle		1
59.....	JMD15-059	Worm Shaft		1
60.....	JMD15-060	Worm Gear		1
61.....	JMD15-061	Shaft		1
62.....	JMD18-062	Compression Spring		1
63.....	JMD15-063	Pin		1
66.....	JMD15-066	Motor Mount		1
67.....	JMD15-067E	Motor	230V, 1HP, 1Ph	1
.....	JMD15-067CA	Capacitor (not shown)	250MFD, 250VAC	1
69.....	JMD15-069	Belt Cover		1
69-1 .....	JMD15-069BCC	Upper Belt Cover Cap		1
69-2 .....	JMD15-069BCP	Upper Belt Cover Plate		1

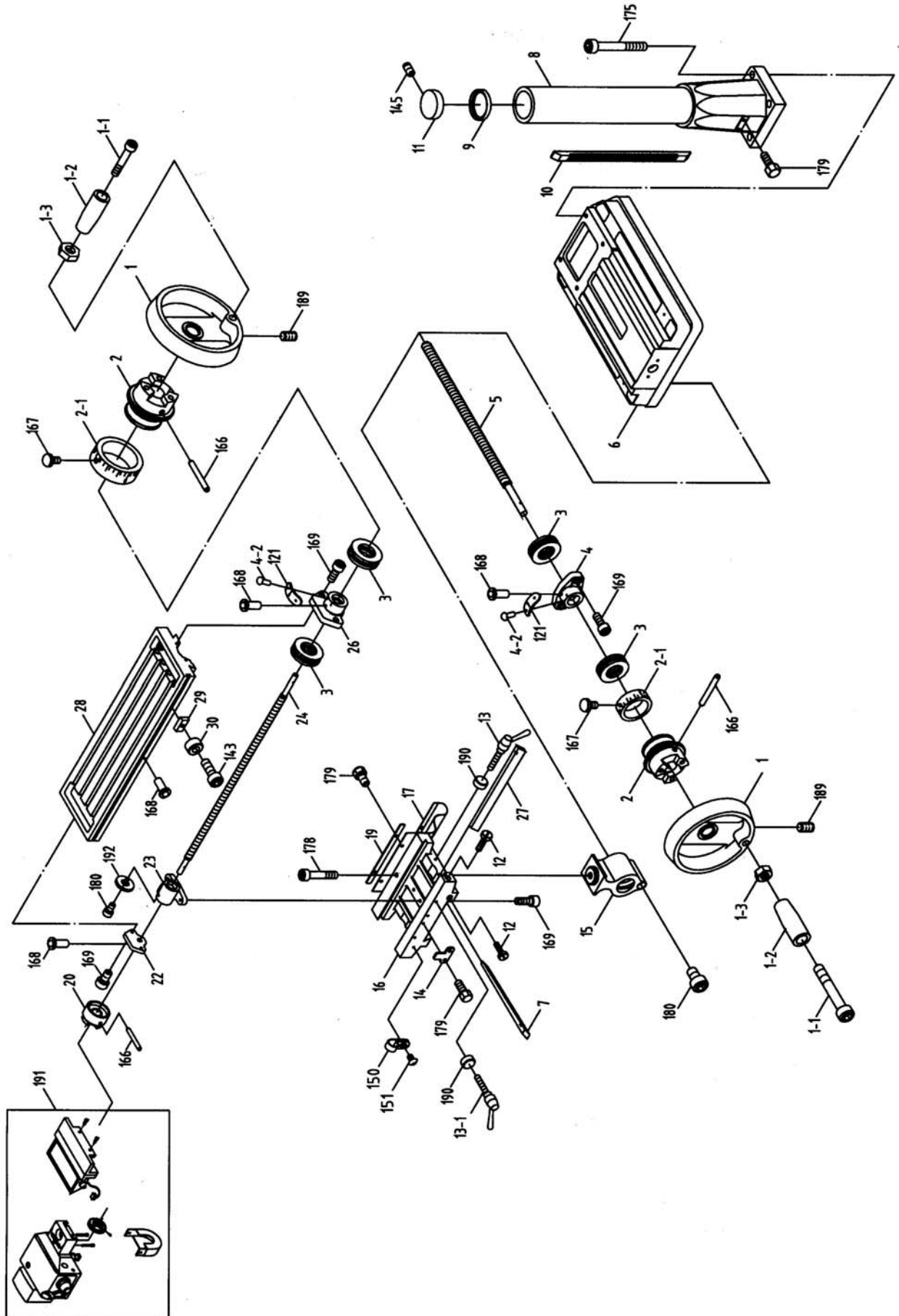
Index No.	Part No.	Description	Size	Qty.
70.....	JMD15-070.....	Motor Pulley .....		1
71.....	VB-A30 .....	V-Belt.....	A30.....	1
72.....	BB-6204Z .....	Ball Bearing.....	6024Z.....	2
73.....	JMD15-073.....	Inter Pulley .....		1
74.....	VB-A38 .....	V-Belt.....	A38.....	1
75.....	JMD15-075.....	Inter Pulley Shaft.....		1
76.....	JMD15-076.....	Speed Change Inter Pulley Base.....		1
79.....	JMD18-079.....	Rubber Collar .....		1
85.....	JMD18-085.....	Screw w/Plumb Knob .....		1
86.....	JMD15-086.....	Cutter.....		1
.....	JMD15-086Cl .....	Cutter Insert ( not shown ) .....		4
87.....	JMD15-087.....	Drill Chuck.....	B16.....	1
88.....	JMD15-088.....	Chuck Key .....		1
90.....	JMD15-090.....	Self Tapping Screw .....		2
103.....	JMD18-103.....	Spring Cover .....		1
104.....	JMD18-104.....	Spring .....		1
105.....	JMD18-105.....	Spring Base.....		1
106.....	JMD15-106.....	Pinion Shaft.....		1
107.....	JMD18-107.....	Worm Gear.....		1
108.....	JMD18-108.....	Gear Housing .....		1
110.....	JMD18-110.....	Hub.....		1
115.....	JMD18-115.....	Spring .....		1
122.....	JMD18-077.....	Clip Plate .....		1
131.....	TS-0813032.....	Pan Head Screw .....	1/4"x1/2"	4
132.....	TS-0680021.....	Washer .....	1/4"	4
133.....	JMD18-133.....	Round Head Screw .....	1/4"x3/8"	3
134.....	TS-0050091.....	Hex Head Bolt .....	1/4"x2"	1
135.....	TS-0561011.....	Hex Nut .....	1/4"	1
136.....	TS-0561051.....	Hex Nut .....	1/2"	2
137.....	JMD15-137.....	Lock Washer .....		1
138.....	JMD15-138.....	Rivet .....		2
139.....	JMD18-139.....	Round Head Screw .....	3/16"x3/4"	3
140.....	JMD18-140.....	Spring Pin.....	3x12"	2
141.....	TS-0561031.....	Hex Nut .....	3/8	3
142.....	JMD18-142.....	Key .....	7x7x20.....	1
143.....	TS-0208041.....	Hex Socket Cap Screw .....	5/16"x3/4"	2
144.....	TS-0680021.....	Washer .....	1/4"	1
145.....	TS-0270021.....	Set Screw .....	5/16"x5/16"	3
146.....	TS-0267031.....	Set Screw .....	1/4"x5/16"	1
147.....	JMD18-147.....	Round Head Screw .....	3/16"x1/2"	2
148.....	JMD18-148.....	C-Retainer Ring .....		1
150.....	TS-0561051.....	Hex Nut .....	1/2"	2
151.....	TS-0680061.....	Washer .....	1/2"	2
152.....	JMD15-152.....	Round Head Screw .....	M6x1.25	6
153.....	TS-0271061.....	Set Screw .....	3/8"x5/8"	3
154.....	TS-0561071.....	Hex Nut .....	5/8"	2
155.....	TS-0680031.....	Washer .....	5/16"	8
156.....	TS-0051051.....	Hex Head Bolt .....	5/16"x1"	4
157.....	TS-0060051.....	Hex Head Bolt .....	3/8"x1/2"	2
158.....	TS-0561021.....	Hex Nut .....	5/16"	4
159.....	JMD18-159.....	Key .....	7x7x40.....	1
160.....	TS-0051071.....	Hex Head Bolt .....	5/16"x1-1/2"	2
161.....	TS-0680031.....	Washer .....	5/16"	2
164.....	JMD15-164.....	Round Head Screw .....		2
187.....	TS-0680021.....	Washer .....	1/4"	2
188.....	JMD18-188.....	Pan Head Screw .....	3/16"x3/8"	1
208.....	TS-0561031.....	Hex Nut .....	3/8"	1

Index No.	Part No.	Description	Size	Qty.
209.....		Working Lamp Base.....		1
210.....		Cross Round Head Screw.....	M4X35L.....	2
211.....		Working Lamp.....		1
.....	JMD15-SC.....	Speed Chart Label (not shown) .....		1
.....	JMD15-JL.....	Jet Label (not shown).....		1
.....	JMD15-ID.....	ID Label (not shown).....		1
.....	JMD15-AP.....	Accessory Package (not shown)* .....		1
.....	JMD15-303.....	Thermal Relay (not shown).....	15A,115V .....	1
.....	JMD18N-116.....	Lamp Assembly (not shown).....	115V.....	1

**\* Contents of the Accessory Package (JMD 15-AP) :**

.....	JMD15-020.....	Cutter Abort.....		1
.....	JMD15-039.....	Handle Rod .....		3
.....	JMD15-040.....	Knob.....		3
.....	JMD15-087.....	Drill Chuck.....		1
.....	JMD15-087A.....	Chuck Key.....		1
.....	JMD15-086.....	Cutter.....		1
.....	365534 .....	Angle Vise .....		1
.....	JMD15-022.....	Handle .....		4
.....	JMD15-201.....	Wheel .....		3
.....	JMD15-058.....	Handle Crank .....		1
.....	TS-152704.....	Hex Wrench.....	3mm .....	1
.....	TS-152705.....	Hex Wrench.....	4mm .....	1
.....	TS-152706.....	Hex Wrench.....	5mm .....	1
.....	JMD15-381.....	Washer .....		1
.....	JMD15-380.....	Hex Bolt.....		1
.....	JMD15-377.....	Hex Bolt.....		2
.....	JMD15-378.....	Hex Nut .....		2
.....	JMD15-379.....	Washer .....		2
.....	MP-007 .....	Touch Up Paint .....		1

# JMD-15 Table, Base, and Column Assembly



**Parts List for JMD-15  
Table, Base, and Column Assembly**

Index No.	Part No.	Description	Size	Qty.
1.....	JMD18-201.....	Table Hand Wheel .....		3
1-1 .....	JMD18-201-1.....	Bolt .....		3
1-2 .....	JMD18-201-2.....	Handle .....		3
1-3 .....	JMD18-201-3.....	Nut.....		3
2.....	JMD18-202.....	Dial Clutch .....		2
2-1 .....	JMD18-202-1.....	Graduated Dial .....		2
3.....	BB-51103 .....	Thrust Bearing.....	51103 .....	4
4.....	JMD15-204.....	Square Flange.....		1
4-2 .....	JMD18-204-2.....	Rivet .....		4
5.....	JMD15-205.....	Table Screw .....		1
6.....	JMD15-206.....	Base .....		1
7.....	JMD15-207.....	Gib Strip .....		1
8.....	JMD15-208.....	Column Base.....		1
9.....	JMD15-209.....	Column Flange Ring .....		1
10.....	JMD15-210.....	Rack .....		1
11.....	JMD15-211.....	Column Cap .....		1
12.....	JMD15-212.....	Adjustment Screw .....		2
13.....	JMD18-213.....	Leaf Screw .....		2
13-1 .....	JMD18-213.....	Locking Handle .....		2
14.....	JMD18-214.....	Block.....		1
15.....	JMD18-215.....	Table Base Nut .....		1
16.....	JMD15-216.....	Center Base .....		1
17.....	JMD15-217.....	Way Cover.....		1
19.....	JMD18-219.....	Bracket Plate .....		1
20.....	JMD18-220.....	Table Clutch .....		1
22.....	JMD15-222.....	Left Flange .....		1
23.....	JMD18-223.....	Table Nut.....		1
24.....	JMD15-224.....	Table Screw .....		1
26.....	JMD15-226.....	Right Flange.....		1
27.....	JMD15-227.....	Gib Strip .....		1
28.....	JMD15-228.....	Table .....		1
29.....	JMD18-229.....	Block.....		2
30.....	JMD18-230.....	Ring.....		2
121.....	JMD15-121.....	Indicator Plate .....		2
143.....	TS-0207021.....	Hex Socket Cap Screw .....	1/4"x1/2" .....	2
145.....	TS-0270021.....	Set Screw .....	5/16"x5/16" .....	1
150.....	.....	Binder .....		1
151.....	.....	Cross Round Head Screw.....	3/16"X1/2"L .....	1
166.....	JMD18-366.....	Spring Pin.....		3
167.....	JMD18-367.....	Zero Indicator w/ Screw .....	1/4"x3/8" .....	2
168.....	JMD18-368.....	Oil Ball .....		5
169.....	TS-0209031.....	Hex Socket Cap Screw .....	3/8"x3/4" .....	8
175.....	TS-0061071.....	Hex Head Bolt .....	7/16"x2" .....	4
178.....	TS-0208111.....	Hex Cap Bolt .....	5/16"x2-1/4" .....	1
179.....	TS-0051011.....	Hex Cap Bolt .....	5/16"x1/2" .....	6
180.....	TS-1502041.....	Hex Socket Cap Screw .....	M5x16 .....	2
189.....	TS-0267041.....	Set Screw .....	1/4"x3/8" .....	3
190.....	.....	Bushing .....		2
191.....	.....	Power down feed Table (Option) .....		1
192.....	.....	Washer .....	M5 .....	2

JMD-15

350017M

	colour of strands	Litzenfarben	couleur des cordons
BK	black	schwarz	noir
BU	blue	blau	bleu
BN	brown	braun	brun
GR	GRAY		
GNYE	green-yellow	grün-gelb	vert-jaune

	meaning of symbol	Bedeutung der Zeichen	interprétation
E	main motor	Hauptmotor	moteur principal
S1	Start switch	Ein-Schalter	bouton marche
S2	off switch	Aus-Schalter	bouton arrêt
A	Cover limit switch	Positionsendschalter	micro
B	Chuck guard limit switch	Positionsendschalter	micro
C	Magnetic contactor	Hauptschütz	contacteur moteur
D	Forward & reverse switch		
F	Motor overload		

230/50/1

