

JET

JMD-16A

METALWORKING
Milling / Drilling Machine

JMD-16A... 50001016M 1~230V, 50Hz

PARTS LIST

JPW (Tool) AG.
Tämperlistrasse 5
CH-8117 Fällanden
Switzerland

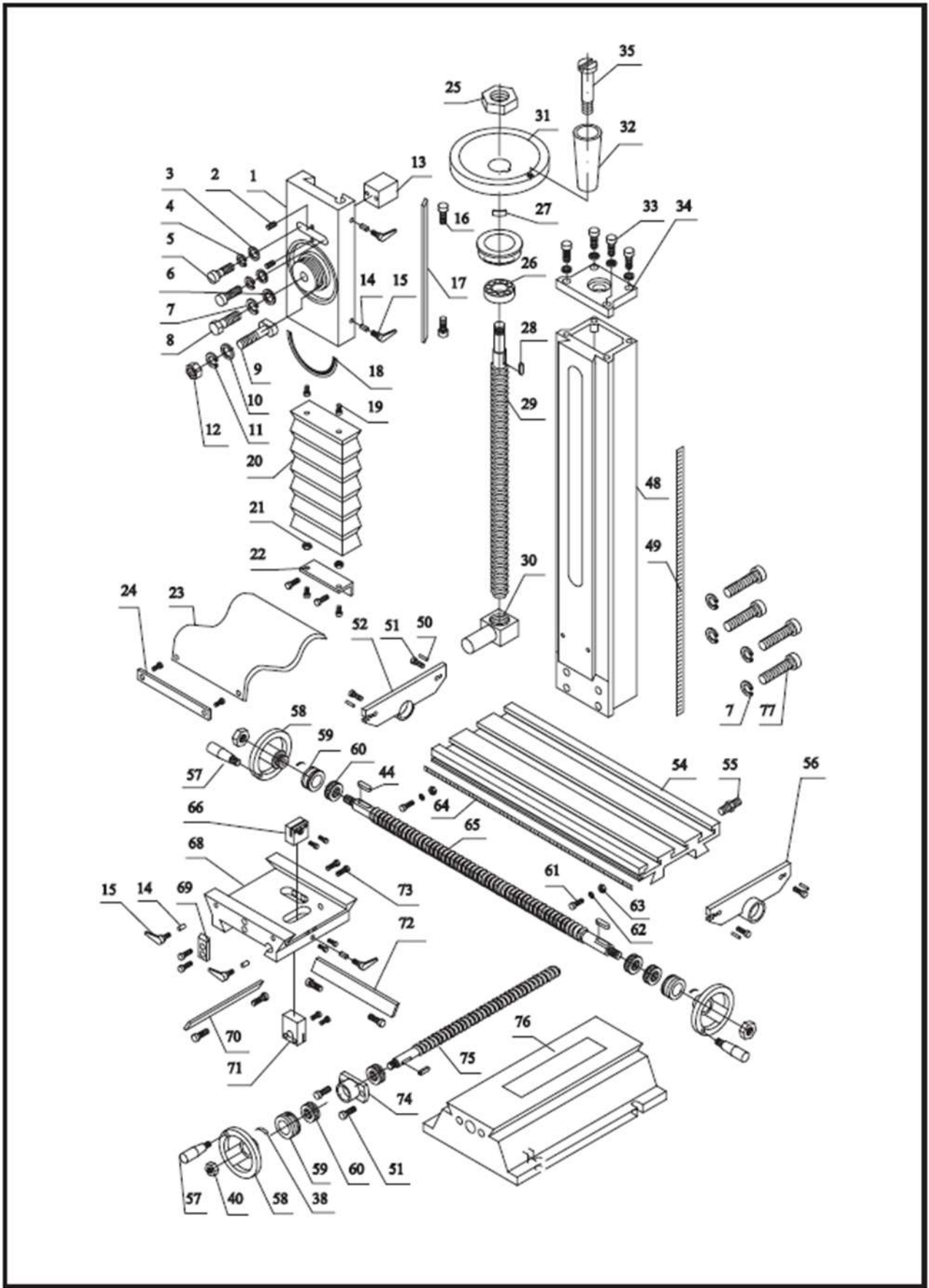
Phone +41 44 806 47 48
Fax +41 44 806 47 58

www.jettools.com

P-50001016M

2015-03

JMD-16A Column, Table, Base Assembly



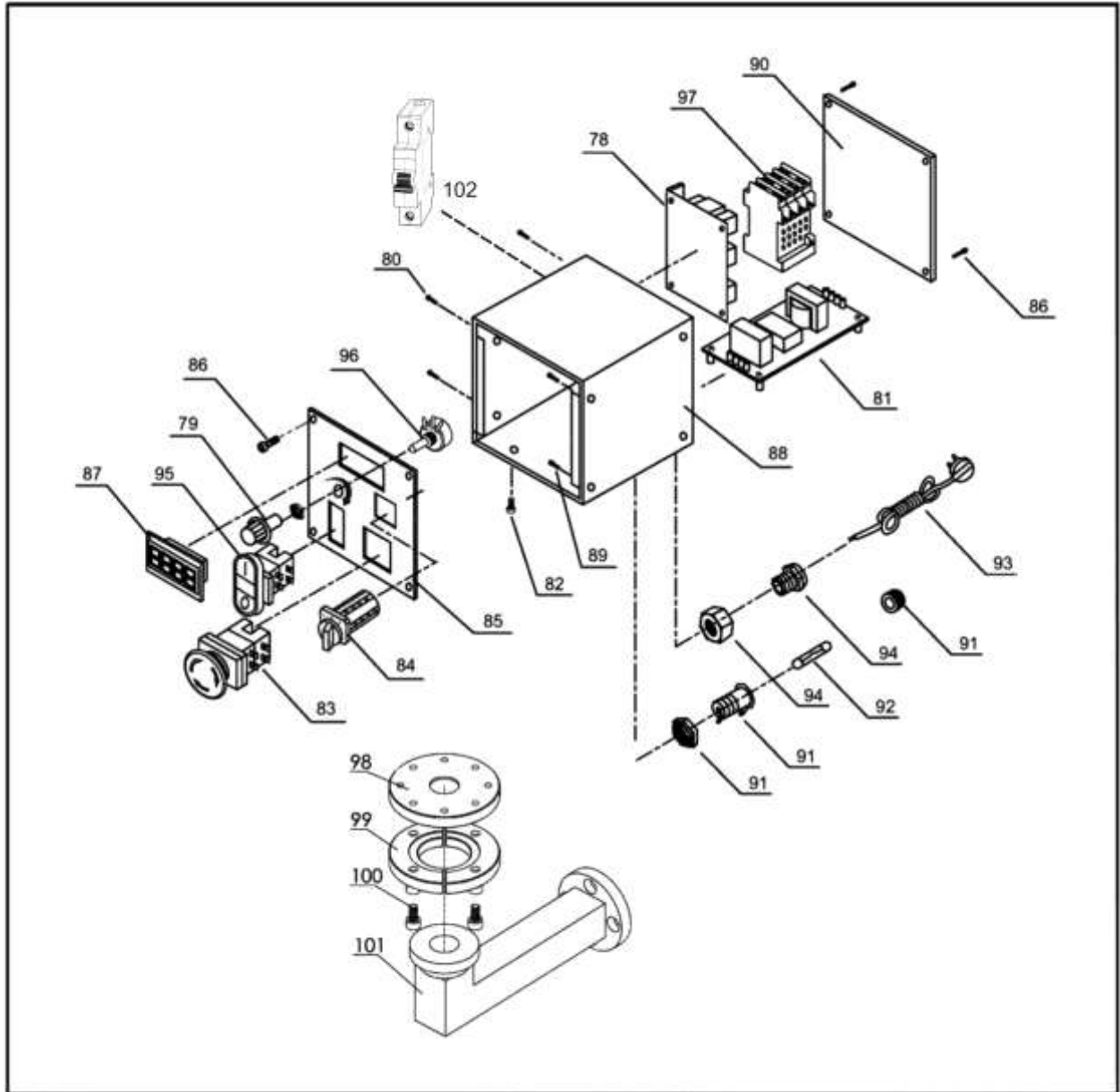
JMD-16A Column, Table, Base Assembly Part List

Index No.	Part No.	Description	Size	Qty
1	JMD-16A-01	Vertical Slide		1
2	TS-1523051	Screw	M6x16	2
3	TS-1550041	Washer	M6	2
4	TS-2361061	Spring Washer	M6	6
5	TS-1504051	Screw	M8x25	2
6	TS-1506051	Screw	M12x40	1
7	TS-2361121	Spring Washer	M12	5
8	JMD-16A-08	T-Nut	12	1
9	JMD-16A-09	Bolt		1
10	TS-1550071	Washer	M10	1
11	TS-2361101	Spring Washer	M10	1
12	TS-2311101	Nut	M10	1
13	JMD-16A-13	Block		1
14	JMD-16A-14	Brass Pin		5
15	JMD-16A-15	Locking Lever	M6x16	5
16	JMD-16A-16	Gib Screw		1
17	JMD-16A-17	Gib		1
18	JMD-16A-18	Angle Indication Label		1
19	TS-1502021	Screw	M5x10	12
20	JMD-16A-20	Dust Cover		1
21	TS-1540031	Nut	M5	2
22	JMD-16A-22	Connect Rib		1
23	JMD-16A-23	Dust Cover		1
24	JMD-16A-24	Connect Rib		1
25	TS-2310162	Nut	M16x1.5	2
26	JMD-16A-26	Bearing		1
27	JMD-16A-27	Spring Kits		1
28	JMD-16A-28	Key	4x16	2
29	JMD-16A-29	Vertical Leadscrew		1
30	JMD-16A-30	Nut		1
31	TS-1501051	Handwheel	M4x16	4
32	JMD-16A-32	Sleeve		1
33	TS-1504041	Screw	M8x20	4
34	JMD-16A-34	Bracket		1
35	JMD-16A-35	Handle		1
38	JMD-16A-38	Spring Piece		2
40	JMD-16A-40	Nut		1
44	JMD-16A-44	Key		3
48	JMD-16A-48	Column		1
49	JMD-16A-49	Label	A5x25	1
50	JMD-16A-50	Pin	M6x16	10
51	JMD-16A-51	Screw		1
52	JMD-16A-52	Left Bracket		1
54	JMD-16A-54	Working Table		1
55	JMD-16A-55	Screw		1
56	JMD-16A-56	Right Bracket		1
57	JMD-16A-57	Handle	M8x63	3
58	JMD-16A-58	Handwheel		3
59	JMD-16A-59	Dial		3
60	JMD-16A-60	Bearing	51200	3
61	TS-1503021	Screw	M6x10	2
62	JMD-16A-62	Bush		2
63	JMD-16A-63	T-Nut		1
64	JMD-16A-64	Scale		1
65	JMD-16A-65	Longitudinal Leadscrew		1
66	JMD-16A-66	Longitudinal Nut		1
67	JMD-16A-67	Adjusted Screw	M4x20	4
68	JMD-16A-68	Cross Slide		1
69	JMD-16A-69	Position Block		1
70	JMD-16A-70	Cross Gib		1
71	JMD-16A-71	Cross Nut		1

Index No.	Part No.	Description	Size	Qty
72	JMD-16A-72	Longitudinal Gib		1
73	TS-1503061	Screw	M6x25	2
74	JMD-16A-74	Bearing Housing		1
75	JMD-16A-75	Cross Leadscrew		1
76	JMD-16A-76	Base		1
77	TS-1506141	Screw	M12x90	4

JMD-16A Electrical Box Assembly

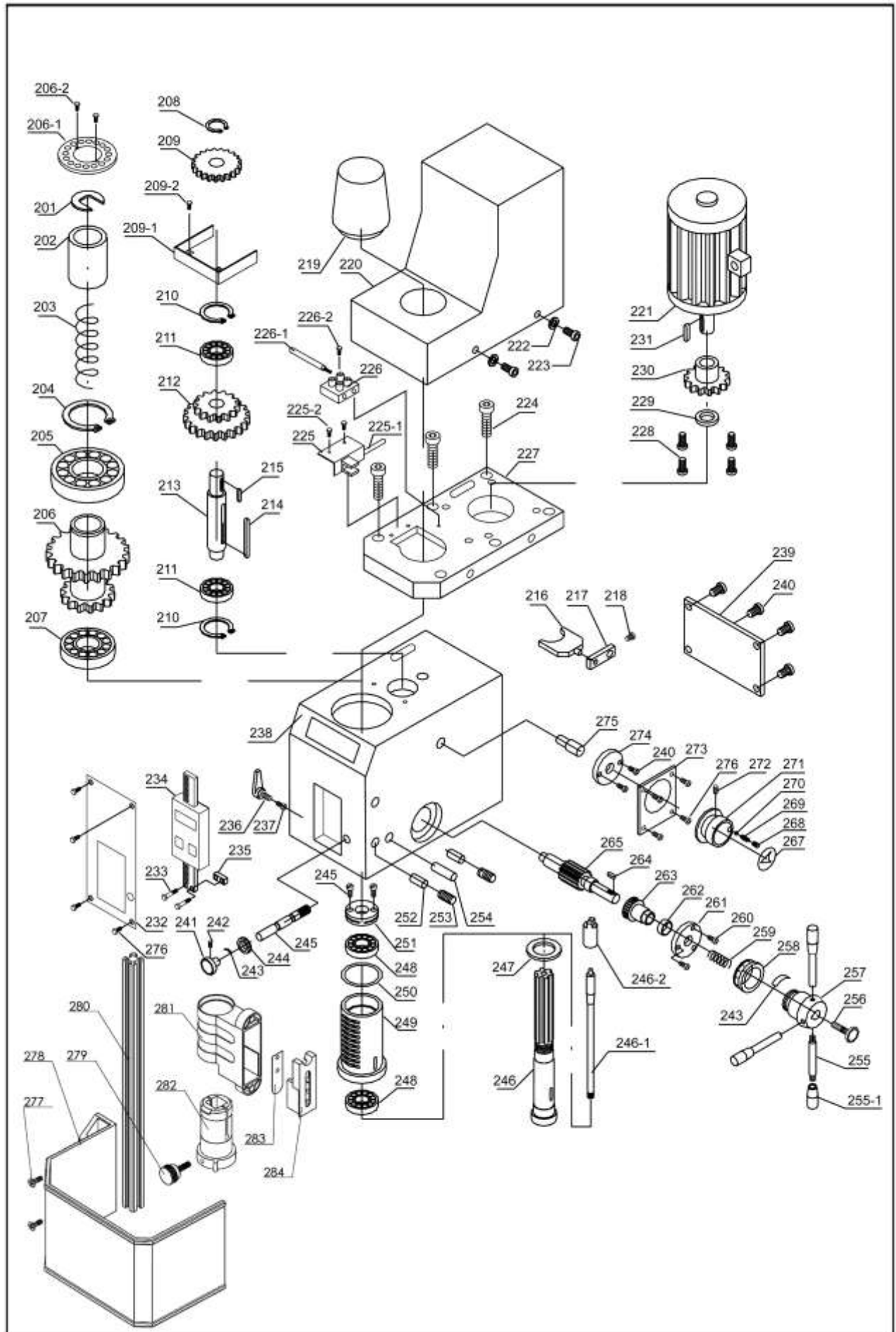
Electrical Box



JMD-16A Electrical Box Assembly Part List

Index No.	Part No.	Description	Size	Qty
78	JMD-16A-78	Speed Control		1
79	JMD-16A-79	Timing Knob		1
80	TS-1520031	Screw	M3x8	4
81	JMD-16A-81	Filter		1
82	JMD-16A-82	Screw	M3x16	4
83	JMD-16A-83	Emergency Switch		1
84	JMD-16A-84	R/F Switch		1
85	JMD-16A-85	Electrical Plate		1
86	TS-1501011	Screw	M4x6	8
87	JMD-16A-87	Speed Display		1
88	JMD-16A-88	Electrical Box		1
89	TS-1502011	Screw	M5x8	4
90	JMD-16A-90	Cover		1
91	JMD-16A-91	Fuse Holder		1
92	JMD-16A-92	Fuse		1
93	JMD-16A-93	Plug		1
94	JMD-16A-94	Strand Relief		1
95	JMD-16A-95	ON/OFF Switch		1
96	JMD-16A-96	Potentiometer		1
97	JMD-16A-97	Contacto		1
98	JMD-16A-98	Fixed block		1
99	JMD-16A-99	Hough flange		1
100	JMD-16A-100	Screw		2
101	JMD-16A-101	Stents		1
102	JMD-16A-102	Circuit breaker	DZ47-63 C10	1

JMD-16A Head Assembly



JMD-16A Head Assembly Part List

Index No.	Part No.	Description	Size	Qty
201	JMD-16A-201	Position Washer		1
202	JMD-16A-202	Bush		1
203	JMD-16A-203	Spring	2.5x28x100	1
204	JMD-16A-204	Snap Ring	Φ 45	1
205	JMD-16A-205	Bearing	6209	1
206	JMD-16A-206	Gears	60/70T	1
206-1	JMD-16A-206-1	Raster Ring	16 Bore	1
206-2	TS-1520031	Screw	M3x8	2
207	JMD-16A-207	Bearing	7007	1
208	JMD-16A-208	Snap Ring	Φ 15	1
209	JMD-16A-209	Gears	37T	1
209-1	JMD-16A-209-1	Guard		1
209-2	TS-1520021	Screw	M3x6	2
210	JMD-16A-210	Snap Ring	Φ 32	2
211	JMD-16A-211	Bearing	6002	2
212	JMD-16A-212	Shafting Gear	42/62T	1
213	JMD-16A-213	Shaft		1
214	JMD-16A-214	Key	5X50	1
215	JMD-16A-215	Key	C5x12	1
216	JMD-16A-216	Fork		1
217	JMD-16A-217	Fork Arm		1
218	TS-1522021	Set Screw	M5x8	1
219	JMD-16A-219	Drawbar Cover		1
220	JMD-16A-220	Motor Cover		1
221	JMD-16A-221	Motor	1~230V 50Hz	1
222	TS-1550021	Washer	M4	6
223	TS-1501021	Screw	M4x8	6
224	JMD-16A-224	Screw	M6x14	6
225	JMD-16A-225	Bracket for finder	(Optional)	1
225-1	JMD-16A-225-1	Electrical wire		1
225-2	TS-1520021	Screw	M3x6	2
226	JMD-16A-226	Terminal	(Optional)	1
226-1	JMD-16A-226-1	Electrical wire	(Optional)	1
226-2	JMD-16A-226-2	Screw	M3x12	1
227	JMD-16A-227	Motor Plate		1
228	TS-1502031	Screw	M5x12	6
229	TS-1550071	Snap Ring	M10	1
230	JMD-16A-230	Gear	25T	1
231	JMD-16A-231	Key	C4X6	1
232	JMD-16A-232	Label		1
233	TS-1520021	Screw	M3x6	2
234	JMD-16A-234	e	(Optional)	1
235	JMD-16A-235	Base		1
236	JMD-16A-236	Locking Lever	M8x20	1
237	JMD-16A-237	Brass Pin		1
238	JMD-16A-238	Mill Head		1
239	JMD-16A-239	Plate for Head		1
240	TS-1501021	Screw	M4x8	6
241	JMD-16A-241	Knob		1
242	TS-1522011	Set Screw	M5x6	1
243	JMD-16A-243	Spring Piece		2
244	JMD-16A-244	Dial		1
245	JMD-16A-245	Worm Shaft		1
246	JMD-16A-246	Spindle		1
246-1	JMD-16A-246-1	Drawbar		1
247	JMD-16A-247	Ring		1
248	JMD-16A-248	Bearing		2
249	JMD-16A-249	Sleeve		1
250	JMD-16A-250	Rubber Ring	58x2.65	1
251	JMD-16A-251	Adjusted Nut		1
252	JMD-16A-252	Brass Pin	B4x20	4
253	TS-1522041	Set Screw	M5X12	4
254	JMD-16A-254	Pin	A6x30	1

Index No.	Part No.	Description	Size	Qty
255	JMD-16A-255	Handle (Include #255-1)		3
256	JMD-16A-256	Knob		1
257	JMD-16A-257	Base		1
258	JMD-16A-258	Dial		1
259	JMD-16A-259	Spring	1.2x12x2.5	1
260	JMD-16A-260	Screw	M4X40	3
261	JMD-16A-261	Flange		1
262	JMD-16A-262	Washer		1
263	JMD-16A-263	Worm Gear		1
264	JMD-16A-264	Key	4x12	1
265	JMD-16A-265	Gear Shaft		1
267	JMD-16A-267	H/L Speed Indication Label		1
268	TS-1524011	Set Screw	M8x8	1
269	JMD-16A-269	Spring	0.8x5x25	1
270	JMD-16A-270	Ball	Φ 6.5	1
271	JMD-16A-271	Knob		1
272	TS-1522051	Set Screw	M5x16	1
273	JMD-16A-273	H/L Speed Label		1
274	JMD-16A-274	Flange		1
275	JMD-16A-275	Fork Shaft		1
276	JMD-16A-276	Screw	M3x6	10
277	JMD-16A-277	Screw	M4x10	2
278	JMD-16A-278	Shield		1
279	JMD-16A-279	Screw		1
280	JMD-16A-280	Power outages rod		1
281	JMD-16A-281	Power outages seat		1
282	JMD-16A-282	Set of		1
283	JMD-16A-283	Leaf spring		1
284	JMD-16A-284	Switch box		1

Wiring Diagram

