

# **JET**

**JMS-10S**

**Slide Miter Saw**

**10000825M/U**  
**230/50/1**

**PARTS LIST**  
**ERSATZTEILLISTE**  
**LISTE DE PIECES**

**WMH Tool Group AG**

Bahnstrasse 24, CH – 8603 Schwerzenbach

[www.wmhtoolgroup.ch](http://www.wmhtoolgroup.ch); [info@wmhtoolgroup.ch](mailto:info@wmhtoolgroup.ch)

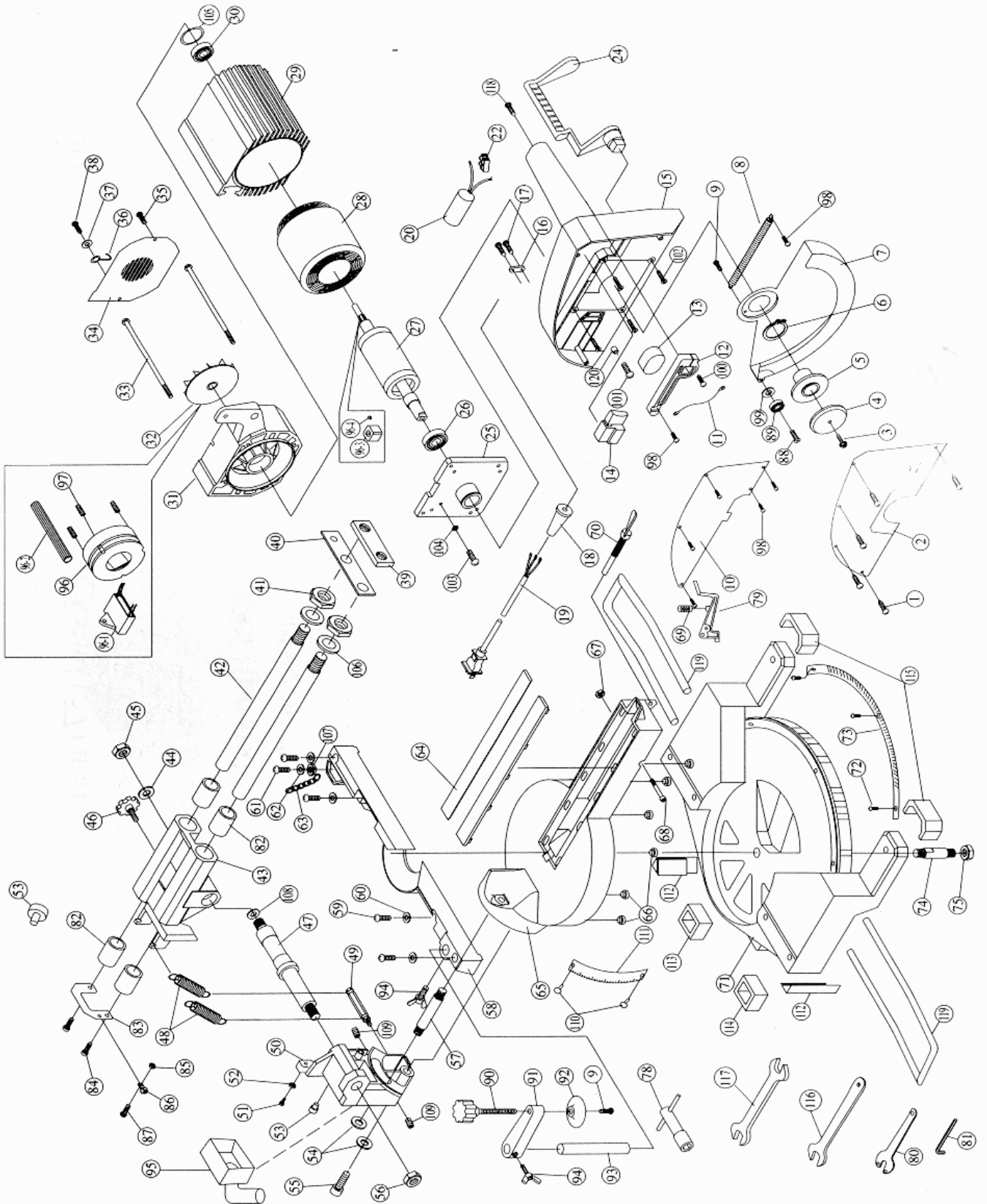
Tel +41 (0) 44 806 47 48

Fax +41 (0) 44 806 47 58



P-10000825M/U 07/05

# Parts Breakdown for JMS-10S Slide Miter Saw



## Parts List for JMS-10S Slide Miter Saw

Index	Part	Description	Size	Qty.
1	JMS10S-001	Pan Head Screw	M4x12	5
2	JMS10S-002	Blade Cover		1
3	JMS10S-003	Arbor Bolt	M8x20	1
4	JMS10S-004	Counter Flange		1
5	JMS10S-005	Arbor Flange		1
6	JMS10S-006	Circlip	S-28	1
7	JMS10S-007	Safety Cover		1
8	JMS10S-008	Blade Guard Return Spring		1
9	JMS10S-009	Flat Head Screw	M5x16	2
10	JMS10S-010	Cover Plate		1
11	JMS10S-011	Blade Guard Wire		1
12	JMS10S-012	Wire Lever Arm		1
13	JMS10S-013	Switch Mount		1
14	JMS10S-014	Switch		1
15	JMS10S-015	Motor Head Cover		1
16	JMS10S-016	Cord Clip		1
17	JMS10S-017	Pan Head Tapping Screw	M4x14	6
18	JMS10S-018	Cord Guard		1
19	JMS10S-019	Power Supply Cord Assembly		1
20	JMS10S-020	Capacitor		1
21	JMS10S-021	N.A.		
22	JMS10S-022	Wire Connector Block		2
23	JMS10S-023	Capacitor Cover		1
24	JMS10S-024	Blade Guard Lever		1
25	JMS10S-025	Bearing Plate		1
26	JMS10S-026	Ball Bearing	6203ZZ	1
27	JMS10S-027	Rotor Assembly		1
28	JMS10S-028	Stator Assembly		1
29	JMS10S-029	Motor Housing		1
30	JMS10S-030	Ball Bearing	6202ZZ	1
31	JMS10S-031	Motor End Casting		1
32	JMS10S-032	Fan		1
33	JMS10S-033	Pan Head Screw	M5x170	2
34	JMS10S-034	Motor Fan Cover		1
35	JMS10S-035	Pan Head Screw	M5x8	1
36	JMS10S-036	Hook		1
37	JMS10S-037	Flat Washer	M5	1
38	JMS10S-038	Pan Head Screw	M5x15	1
39	JMS10S-039	Mounting Plate		1
40	JMS10S-040	Cover Plate		1
41	JMS10S-041	Hex Nut	M16	2
42	JMS10S-042	Telescopic Rod		2
43	JMS10S-043	Telescopic Arm Casting		1
44	JMS10S-044	Flat Washer	30x17x3	1
45	JMS10S-045	Hex Nut	M16	1
46	JMS10S-046	Slide Lock		1
47	JMS10S-047	Motor Head Axle		1
48	JMS10S-048	Tension Spring		2
49	JMS10S-049	Spring Bolt		1
50	JMS10S-050	Swivel Casting		1
51	JMS10S-051	Hex Head Screw	M6x20	1
52	JMS10S-052	Hex Nut	M6	2
53	JMS10S-053	Rubber Pad		2
54	JMS10S-054	Flat Washer	M12	2
55	JMS10S-055	Hex Head Bolt	M12x60	1
56	JMS10S-056	Hex Nut	M16	1
57	JMS10S-057	Metal End Stud	M12	1
58	JMS10S-058	Fence		1
59	JMS10S-059	Pan Head Screw	M8x20	4
60	JMS10S-060	Spring Washer	M8	4
61	JMS10S-061	Pan Head Screw	M6x20	1

Index	Part	Description	Size	Qty.
62	JMS10S-062	Flat Washer	M6	1
63	JMS10S-063	Chain		1
64	JMS10S-064	Kerf Plate		2
65	JMS10S-065	Turn Table		1
66	JMS10S-066	Rubber Washer		6
67	JMS10S-067	Hex Nut	M8	1
68	JMS10S-068	Hex Bolt	M8x40	1
69	JMS10S-069	Pressure Spring		1
70	JMS10S-070	Lock Tab		1
71	JMS10S-071	Table		1
72	JMS10S-072	Pan Head Screw	M3.5x10	3
73	JMS10S-073	Miter Scale		1
74	JMS10S-074	Turn Table Axle		1
75	JMS10S-075	Hex Nut	M12	1
76	JMS10S-076	Wrench	M13	1
77	JMS10S-077	Lock Bar		1
78	JMS10S-078	Bevel Lock Lever		1
79	JMS10S-079	Miter Lock Lever		1
80	JMS10S-080	Lock Nut Wrench		1
81	JMS10S-081	Hex Wrench	M6	1
82	JMS10S-082	Linear Bearing	LM20	4
83	JMS10S-083	Slide Limit Plate		1
84	JMS10S-084	Hex Bolt	M6x16	2
85	JMS10S-085	Nut	M4	1
86	JMS10S-086	Cord Clamp		1
87	JMS10S-087	Pan Head Screw	M4x12	1
88	JMS10S-088	Flat Head Screw	M4x15	1
89	JMS10S-089	Ball Bearing	626ZZ	1
90	JMS10S-090	Clamp Knob Bolt		1
91	JMS10S-091	Clamp Arm		1
92	JMS10S-092	Clamp Face		1
93	JMS10S-093	Clamp Shaft		1
94	JMS10S-094	Butterfly Bolt	M6x12	2
95	JMS10S-095	Dust Collector Attachment		1
96	JMS10S-096	Motor Brake (Optional)		1
96-1	JMS10S-096-1	Brake Rectifier		1
96-2	JMS10S-096-2	Brake Wiring Sheath	25cm	1
96-3	JMS10S-096-3	Brake Block		1
96-4	JMS10S-096-4	Brake Woodruff Key	M4x12	1
97	JMS10S-097	Set Screw	M5x25	3
98	JMS10S-098	Pan Head Screw	M4x8	7
99	JMS10S-099	Flat Washer	M4	1
100	JMS10S-100	Pan Head Tapping Screw	M5x30	1
101	JMS10S-101	Pan Head Tapping Screw	M4x16	1
102	JMS10S-102	Flat Head Screw	M5x20	4
103	JMS10S-103	Pan Head Tapping Screw	M4x6	1
104	JMS10S-104	Star Washer	M4	1
105	JMS10S-105	O-Ring	M31x2	1
106	JMS10S-106	O-Ring	M18x3	2
107	JMS10S-107	Nyloc Nut	M6	1
108	JMS10S-108	Flat Washer	M25.4x35x2	1
109	JMS10S-109	Set Screw	M8x10	2
110	JMS10S-110	Rivet	M2.5	2
111	JMS10S-111	Bevel Scale Sticker		1
112	JMS10S-112	Base Stabilizer Leg		2
113	JMS10S-113	Right-Rear Rubber Foot		1
114	JMS10S-114	Left-Rear Rubber Foot		1
115	JMS10S-115	Front Rubber Foot		2
116	JMS10S-116	Wrench	M10	1
117	JMS10S-117	Wrench	M24/M27	1
118	JMS10S-118	Pan Head Tapping Screw	M5x20	1
119	JMS10S-119	Table Extension Bar (Optional )		2
120	JMS10S-120	Rubber Bump Stop		1