

J E T

JOVS-10

Oscillating Spindle Sander

708411M

230/50/1

**PARTS LIST
ERSATZTEILLISTE
LISTE DE PIECES**

WMH Tool Group AG

Bahnstrasse 24, CH – 8603 Schwerzenbach
www.wmhtoolgroup.ch; info@wmhtoolgroup.ch

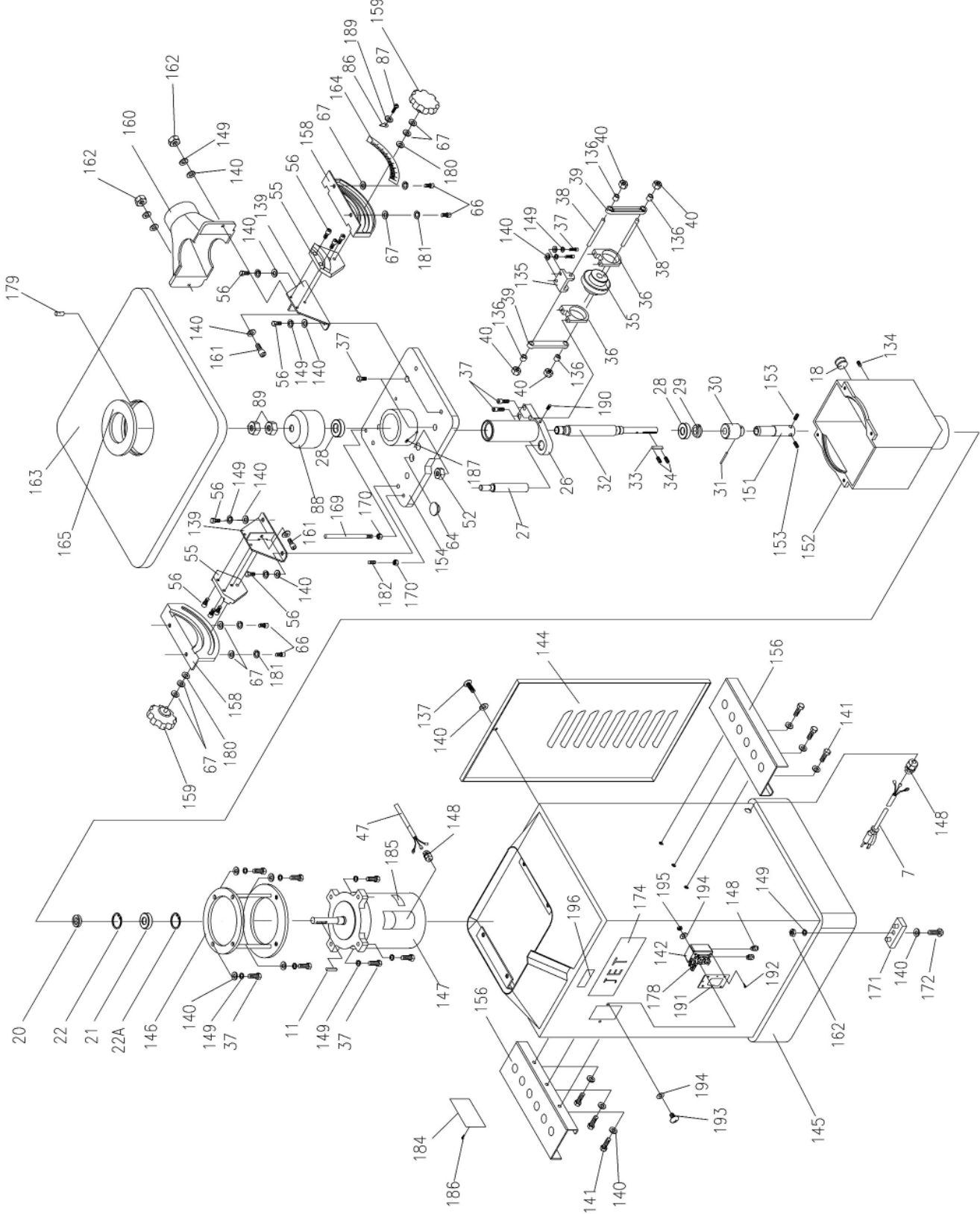
Tel +41 (0) 1 806 47 48

Fax +41 (0) 1 806 47 58



P-708411M 11/02

Breakdown for the JET Oscillating Spindle Sander



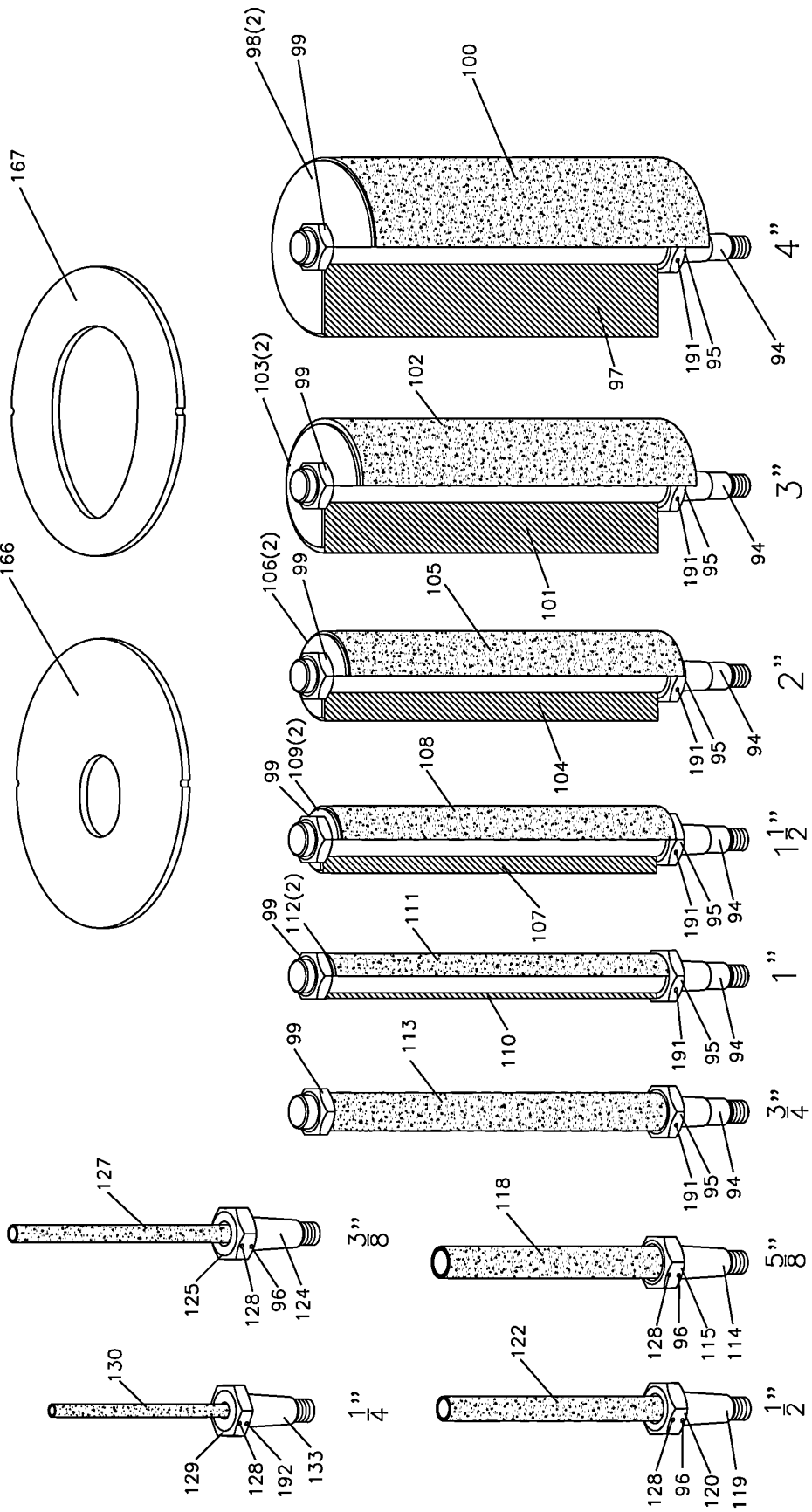
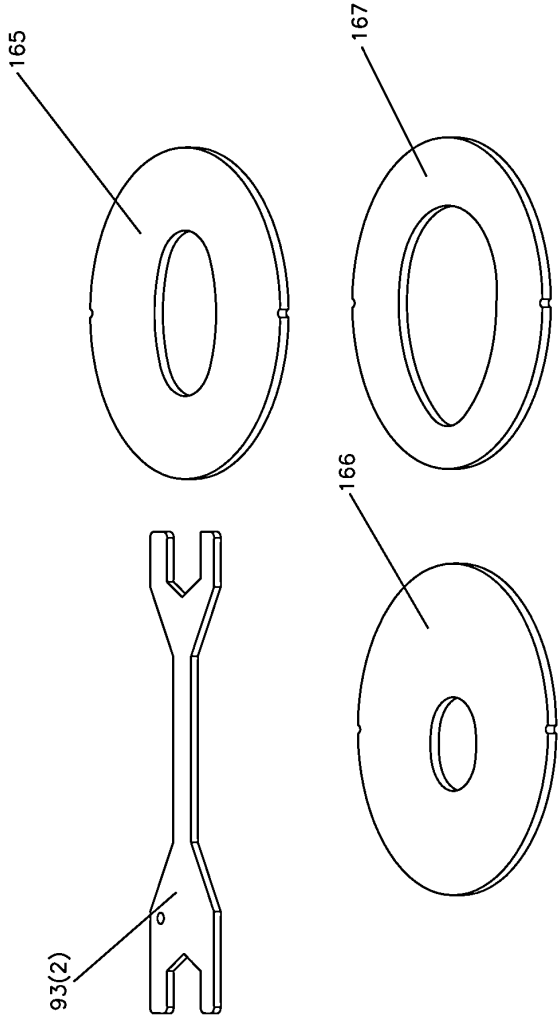
Parts List for the JET JOVS-10

Oscillating Spindle Sander

| Index No. | Part No. | Description | Size | Qty. |
|-----------|---------------|-----------------------------|-------------------|------|
| 7 | OVS10-007E | Power Cord | | 1 |
| 11 | KEY5525 | Key | | 1 |
| 18 | OVS10-18 | Oil Indicator | | 1 |
| 20 | OS-30628 | Oil Seal | | 1 |
| 21 | BB-6206ZZ | Ball Bearing | 6206ZZ | 1 |
| 22 | OVS10-022 | C-Ring | RA63 | 1 |
| 22A | OVS10-022A | C-Ring | RA62 | 1 |
| 26 | OVS10-026 | Sleeve | | 1 |
| 27 | OVS10-027 | Guide Rail Shaft | | 1 |
| 28 | BB-6205ZZ | Ball Bearing | 6205LU | 2 |
| 29 | OVS10-029 | Locking Nut | | 1 |
| 30 | OVS10-030 | Worm | | 1 |
| 31 | OVS10-031 | Spring Pin | 5x30 | 1 |
| 32 | OVS10-032 | Main Shaft | | 1 |
| 33 | KEY5550 | Key | 5x5x50 | 1 |
| 34 | OVS10-034 | Set Screw | M3x12 | 2 |
| 35 | OVS10-035 | Spur Gear | | 1 |
| 36 | OVS10-036 | Brass Bushing | | 2 |
| 37 | TS-0208061 | Socket Head Cap Screw | 5/16" - 18x1" | 16 |
| 38 | OVS10-038 | Transmission Rod Shaft | | 2 |
| 39 | OVS10-039 | Transmission Rod | | 2 |
| 40 | TS-0640091 | Hex Nut, Nylon Lock | 3/8" - 16 | 4 |
| 47 | OVS10-047E | Switch Cord | | 1 |
| 52 | OVS10-052 | Locking Nut | 5/8" - 11 | 1 |
| 55 | OVS10-055 | Rear Trunnion Bracket | | 2 |
| 56 | TS-0208082 | Socket Head Cap Screw | 5/16" - 24x1-1/2" | 10 |
| 64 | OVS10-064 | Oil Lid | | 1 |
| 66 | OVS10-066 | Hex Socket Cap Screw | 3/8" - 16x3/4" | 4 |
| 67 | TS-0680042 | Flat Washer | 3/8" | 8 |
| 86 | OVS10-086 | Angle Pointer | | 1 |
| 87 | OVS10-087 | Pan Head Machine Screw | 10-24x1/4" | 1 |
| 88 | OVS10-088 | Cap | | 1 |
| 89 | OVS10-089 | Nut | 15/16" - 24 R.H | 2 |
| 134 | JOVS10-134 | Oil Plug | PT1/4" | 1 |
| 135 | JOVS10-135 | Brass Bushing Bracket | | 1 |
| 136 | JOVS10-136 | Shaft Brass Bushing | | 4 |
| 137 | JOVS10-137E | Pan Head Screw | 5/16" - 18x3/4" | 1 |
| 139 | JOVS10-139W | Bracket Base | | 2 |
| 140 | TS-0680032 | Flat Washer | 5/16" | 24 |
| 141 | TS-0051021 | Cap Screw | 5/16" - 18x5/8" | 6 |
| 142 | JOVS10-142E | Switch Box | | 1 |
| 144 | JOVS10-144W | Vent Cover | | 1 |
| 145 | JOVS10-145WE | Base | | 1 |
| 146 | JOVS10-146 | Motor Bracket | | 1 |
| 147 | JOVS10-147E | Motor | | 1 |
| | JOVS10-147MF | Motor Fan (not shown) | | 1 |
| | JOVS10-147MFC | Motor Fan Cover (not shown) | | 1 |
| | JOVS10-147CC | Capacitor Cover (not shown) | | 1 |

| Index No. | Part No. | Description | Size | Qty. |
|-----------|--------------|--------------------------------|-----------------|------|
| | JOVS10-147RC | Running Capacitor (not shown) | 45uf, 250V | 1 |
| | JOVS10-147SC | Starting Capacitor (not shown) | 300MFD, 125VAC | 1 |
| 148 | JOVS10-148E | Strain Relief Bushing | | 4 |
| 149 | TS-0720081 | Lock Washer | 5/16" | 20 |
| 151 | JOVS10-151 | Coupling Head | | 1 |
| 152 | JOVS10-152 | Tank | | 1 |
| 153 | TS-0267041 | Set Screw | 1/4"-20x3/8" | 2 |
| 154 | JOVS10-154 | Tank Lid | | 1 |
| 156 | JOVS10-156W | Sanding Assembly Rack | | 2 |
| 158 | JOVS10-158W | Rear Trunnion | | 2 |
| 159 | JOVS10-159 | Locking Knob | 3/8"-16x3/4" | 2 |
| 160 | JOVS10-160W | Dust Cover | | 1 |
| 161 | TS-0051061 | Hex Bolt | 5/16"-18x1-1/4" | 2 |
| 162 | TS-0561021 | Hex Nut | 5/16"-18 | 6 |
| 163 | JOVS10-163W | Working Table | | 1 |
| 164 | JOVS10-164 | Scale | | 1 |
| 169 | JOVS10-169 | Fixed Rod | | 1 |
| 170 | TS-0561031 | Hex Nut | 3/8"-16 | 2 |
| 171 | JOVS10-171 | Rubber Feet | | 4 |
| 172 | JOVS10-172 | Sinking Head Screw | 5/16"-18x3/4" | 4 |
| 174 | JOVS10-174 | JET Logo | | 1 |
| 177 | JOVS10-177E | Pan Head Screw | 3/16"-24x3/8" | 2 |
| 178 | JOVS10-178E | Switch | | 1 |
| 179 | JOVS10-179 | Spring Pin | 3x22 | 1 |
| 180 | JOVS10-180 | Fiber Washer | 3/8" | 2 |
| 181 | TS-0720091 | Lock Washer | 3/8" | 4 |
| 182 | TS-0271071 | Set Screw | 3/8"-16x3/4" | 1 |
| 184 | JOVS10-184E | I.D Label | | 1 |
| 185 | JOVS10-185E | Motor Label | | 1 |
| 186 | JOVS10-186 | Rivet | | 4 |
| 187 | TS-0267041 | Set Screw | 1/4"-20x3/8" | 1 |
| 189 | TS-0680011 | Flat Washer | 3/16" | 1 |
| 190 | TS-0267021 | Set Screw | 1/4"-20x1/4" | 2 |
| 191 | JOVS10-191E | Switch Cover | | 1 |
| 192 | JOVS10-192E | Machine Screw | | 4 |
| 193 | JOVS10-193E | Pan Head Screw | 1/4"-20x3/8" | 2 |
| 194 | TS-0680021 | Flat Washer | 1/4" | 4 |
| 195 | TS-0561011 | Nut | 1/4"-20 | 2 |
| 196 | JOVS10-196E | Direction Label | | 1 |

Sanding Assemblies



Sanding Assemblies

| Index No. | Part No. | Description | Size | Qty. |
|-----------|------------|---------------------------|---------------|------|
| 93 | OVS10-093 | Wrench | | 2 |
| 94 | OVS10-094A | Arbor | 3/4" | 6 |
| 95 | OVS10-095 | Hex Nut | | 6 |
| 96 | OVS10-096 | Spring Pin | 3.5x25 | 3 |
| 97 | 30105000J | P.V.C | 4" | 1 |
| 98 | OVS10-098 | Washer | 4" | 2 |
| 99 | OVS10-099 | Nut | 3/4"-16" | 6 |
| 100 | 575834 | Sanding Sleeve (60 Grit) | 4" | |
| | 575835 | Sanding Sleeve (80 Grit) | 4" | |
| | 575836 | Sanding Sleeve (100 Grit) | 4" | |
| 101 | 30105000I | P.V.C | 3" | 1 |
| 102 | 575830 | Sanding Sleeve (60 Grit) | 3" | |
| | 575831 | Sanding Sleeve (80 Grit) | 3" | |
| | 575832 | Sanding Sleeve (100 Grit) | 3" | |
| 103 | OVS10-103 | Washer | 3" | 2 |
| 104 | 30105000H | P.V.C | 2" | 1 |
| 105 | 575826 | Sanding Sleeve (60 Grit) | 2" | |
| | 575827 | Sanding Sleeve (80 Grit) | 2" | |
| | 575828 | Sanding Sleeve (100 Grit) | 2" | |
| 106 | OVS10-106 | Washer | 2" | 2 |
| 107 | 30105000G | P.V.C | 1-1/2" | 1 |
| 108 | 575822 | Sanding Sleeve (60 Grit) | 1-1/2" | |
| | 575823 | Sanding Sleeve (80 Grit) | 1-1/2" | |
| | 575824 | Sanding Sleeve (100 Grit) | 1-1/2" | |
| 109 | OVS10-109 | Washer | 1-1/2" | 2 |
| 110 | 30105000F | P.V.C | 1" | 1 |
| 111 | 575818 | Sanding Sleeve (60 Grit) | 1" | |
| | 575819 | Sanding Sleeve (80 Grit) | 1" | |
| | 575820 | Sanding Sleeve (100 Grit) | 1" | |
| 112 | OVS10-112 | Washer | 1" | 2 |
| 113 | 575814 | Sanding Sleeve (60 Grit) | 3/4" | |
| | 575815 | Sanding Sleeve (80 Grit) | 3/4" | |
| | 575816 | Sanding Sleeve (100 Grit) | 3/4" | |
| 114 | OVS10-114A | Arbor | 5/8" | 1 |
| 115 | OVS10-115 | Hex Nut | | 1 |
| 118 | 575810 | Sanding Sleeve (60 Grit) | 5/8" | |
| | 575811 | Sanding Sleeve (80 Grit) | 5/8" | |
| | 575812 | Sanding Sleeve (100 Grit) | 5/8" | |
| | 575813 | Sanding Sleeve (120 Grit) | 5/8" | |
| 119 | OVS10-119A | Arbor | 1/2" | 1 |
| 120 | OVS10-120 | Hex Nut | | 1 |
| 122 | 575806 | Sanding Sleeve (60 Grit) | 1/2" | |
| | 575807 | Sanding Sleeve (80 Grit) | 1/2" | |
| | 575808 | Sanding Sleeve (100 Grit) | 1/2" | |
| | 575809 | Sanding Sleeve (120 Grit) | 1/2" | |
| 124 | OVS10-124A | Arbor | | 1 |
| 125 | OVS10-125 | Hex Nut | | 1 |
| 127 | 575802 | Sanding Sleeve (60 Grit) | 3/8" | |
| | 575803 | Sanding Sleeve (80 Grit) | 3/8" | |
| | 575804 | Sanding Sleeve (100 Grit) | 3/8" | |
| 128 | OVS10-117 | Set Screw | 3/16"-24x1/4" | 4 |
| 129 | OVS10-129 | Arbor | | 1 |

| Index No. | Part No. | Description | Size | Qty. |
|------------------|-----------------|---------------------------|-------------|-------------|
| 130 | 575800 | Sanding Sleeve (100 Grit) | 1/4" | 1 |
| | 575801 | Sanding Sleeve (120 Grit) | 1/4" | 1 |
| 133 | OVS10-133A | Spindle | | 1 |
| 165 | JOVS10-165 | Table Insert (medium) | | 1 |
| 166 | JOVS10-166 | Table Insert (small) | | 1 |
| 167 | JOVS10-167 | Table Insert (Large) | | 1 |
| 191 | JOVS10-191 | Spring Pin | 5x25 | 6 |
| 192 | JOVS10-192 | Spring Pin | 3x25 | 1 |

**JOVS-10
708411M**

230/50/1

| | colour of strands | Litzenfarben | couleur des cordons |
|------|-------------------|--------------|---------------------|
| BK | black | schwarz | noir |
| WH | white | weiß | blanc |
| BU | blue | blau | bleu |
| YE | yellow | gelb | jaune |
| RD | red | rot | rouge |
| BN | brown | braun | brun |
| GY | grey | grau | gris |
| GNYE | green-yellow | grün-gelb | vert-jaune |
| OG | orange | orange | orange |
| VT | violet | violett | violet |

| | meaning of symbol | Bedeutung der Zeichen | interprétation |
|----|--------------------|------------------------|------------------------|
| M | motor | Motor | moteur |
| S | switch | Schalter | interrupteur |
| C | condenser | Kondensator | condensateur |
| E | electronic unit | Elektronik Einheit | unité électronique |
| F | fuse | Sicherung | fusible |
| RS | reversing switch | Drehrichtungsschalter | commu. droite/gauche |
| S | centrifugal switch | Fliehkraftschalter | déclencheur centrifuge |
| OL | overload cut-off | Überlastschutzschalter | déclencheur surcharge |
| LS | limit switch | Positionsendschalter | micro |

