

JET

JPF-3/34/48 Power feeder

JPF-3...230/50/1...10000258M

JPF-3...400/50/3...10000258T

JPF-34..400/50/3...10000259T

JPF-48..400/50/3...10000270T

PARTS LIST

JPW (Tool) AG
Tämplerlistrasse 5
CH-8117 Fällanden
Switzerland

Phone +41 44 806 47 48

Fax +41 44 806 47 58

www.jettools.com

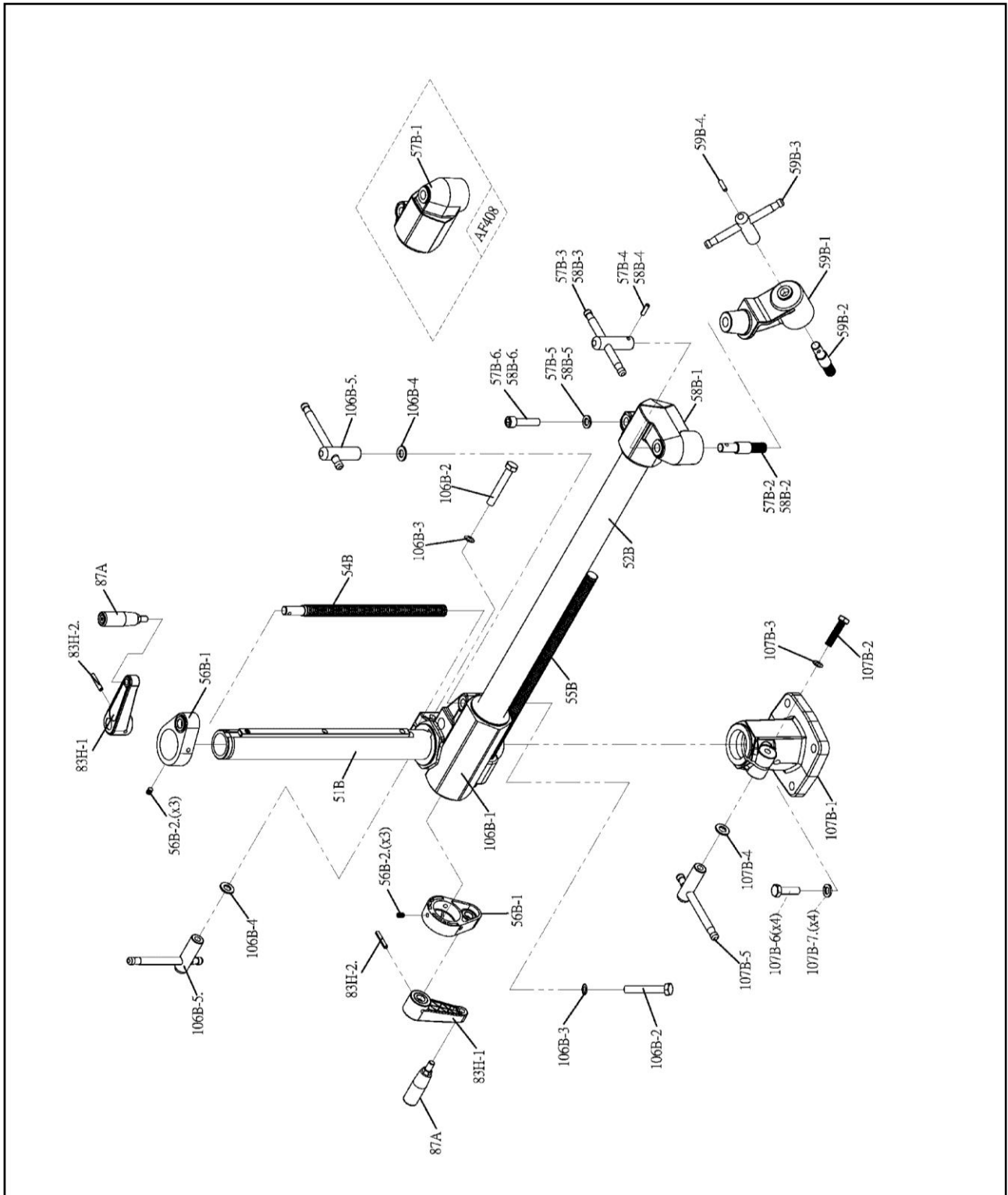
P-10000258M/T-10000270T 2014-05



JPF-3 Partlist and breakdown

Part No.	Code No.	Description	Q'ty	Part No.	Code No.	Description	Q'ty	Part No.	Code No.	Description	Q'ty
B076203	B076203	Bearing(#6203)	1	08B-2	G320008	Roller Spindle	1	18A	U010051	Knob (M6-1.0Px30L)	2
01B	01B	Sprocket Case Kit (M.Lt)	1	08B-3	N030012	Spring Washer (M12)	1	18B	18B	Wormgear Cover Kit (308)	1
01B-1	T315106	Grease Nipple (M6-1.0Px1.0)	1	08B-4.	N11012H	Nut (M12-1.75P)	1	18B-1	U210005	Oil Seal	1
01B-2	C020009	Sprocket Case	1	09B	09B	Housing Frame Kit (308)	1	18B-2	C020308	Wormgear Cover	1
01B-3	N950002	Spring (φ37x10.5)	1	09B-1	C020311	Housing Frame (308)	1	18B-3	Q021701	Oil Seal (17x32x7t)	1
01B-4.	U010065	Case Cover	1	09B-2	A500301	Bushing (29Dx23Dx(9+3))	1	18B-4.	S060616	Cap Screw (M6-1.0Px16L)	4
02B	02B	Sprocket Case Kit (M.Rt)	1	09B-3.	S100610	Set Screw (M6-1.0Px10L)	3	19B	19B	Gear Kit (20T/40T)	1
02B-1	T315106	Grease Nipple (M6-1.0Px1.0)	1	11B	U010027	Housing Cover (308)	1	19B-1	A500316	Gear (20T)	1
02B-2	C020009	Sprocket Case	1	13B	13B	Taper Cone Kit (308)	1	19B-2.	A500313	Gear (40T)	1
02B-3	N950002	Spring (φ37x10.5)	1	13B-1	A200319	Taper Cone	1	20B	20B	Gear Kit (26T/34T)	1
02B-4.	U010065	Case Cover	1	13B-2	N030008	Spring Washer (8.3x1.8t)	3	20B-1	A500314	Gear (34T)	1
03B	03B	Roller Base Kit	3	13B-3.	S900825	Cap Screw (M8-1.25Px25L)	3	20B-2.	A500315	Gear (26T)	1
03B-1	A200320	Roller Supporter	1	14B	14B	Transmission Kit (308)	1	21A	21A	Oil-Cap Kit (M16)	1
03B-2	A500312	Sprocket (17T)	1	14B-1	A500303	Sprocket (12Tx3/8")	1	21A-1	U010008	Oil Cap (16mm)	1
03B-3	S070516	Cap Screw (M5-0.8Px16L)	2	14B-2	A500307	Double-Sprocket (12T)	3	21A-2.	Q010012	"O" Ring (P12)	1
03B-4	N050058	Lock Washer (5/16"x1.4t)	2	14B-3	A500308	Bushing	1	25M1	25M1	Motor w/ Switch 1/2HP.1PH	1
03B-5.	S900825	Cap Screw (M8-1.25Px25L)	2	14B-4	K330036	Chain (36S)	1	25M3	25M3	Motor w/ Switch 1/2HP.3PH	1
04B	K330022	Chain (22S)	3	14B-5.	K330022	Chain (22S)	1	26B	26B	Switch Kit	1
05B	05B	Tube Kit	3	16B	16B	Wormgear Shaft Kit 50Hz	1	39A	39A	Brush Kit	2
05B-1	E270002	Tube (φ27xφ19x81L)	1	16B-1	C120010	Worm Gear (39T, 50Hz)	1	39A-1	U010088	Brush	1
05B-2	N510026	Snap Ring (26)	1	16B-2	G320009	Wormgear Shaft	1	39A-2	S600612	Hex Screw (M6-1.0Px12)	2
06B	06B	Sprocket Shaft Kit	2	16B-3	K420612	Key (6x6x12L)	1	39A-3.	N050057	Lock Washer (1/4"x1.4t)	2
06B-1	G320006	Sprocket Shaft	1	16B-4	N011225	Flat Washer (M12x25D)	1	46A	46A	Switch Box	1
06B-2.	N510015	Snap Ring (15)	1	16B-5.	N11012H	Nut (M12-1.75P)	1	103B	103B	Sprocket Case (308.Rt)	1
07B	07B	Main Sprocket Shaft Kit	1	17B	17B	Wormgear Shaft Kit 60Hz	1	103B-1	T315106	Grease Nipple (M6-1.0Px1.0)	1
07B-1	G320007	Main Sprocket Shaft	1	17B-1	C120004	Worm Gear (45T, 60Hz)	1	103B-2	C020059	Sprocket Case	1
07B-2	N011225	Flat Washer (M12x25D)	1	17B-2	G320009	Wormgear Shaft	1	103B-3	N950002	Spring (φ37x10.5)	1
07B-3.	N11012H	Nut (M12-1.75P)	1	17B-3	K420612	Key (6x6x12L)	1	103B-4.	U010065	Case Cover	1
08B	08B	Roller Spindle Kit	3	17B-4	N011225	Flat Washer (M12x25D)	1	RO101	C020304	Roller (φ100x50x1)	3
08B-1	T315106	Grease Nipple (M6-1.0Px1.0)	1	17B-5.	N11012H	Nut (M12-1.75P)	1				

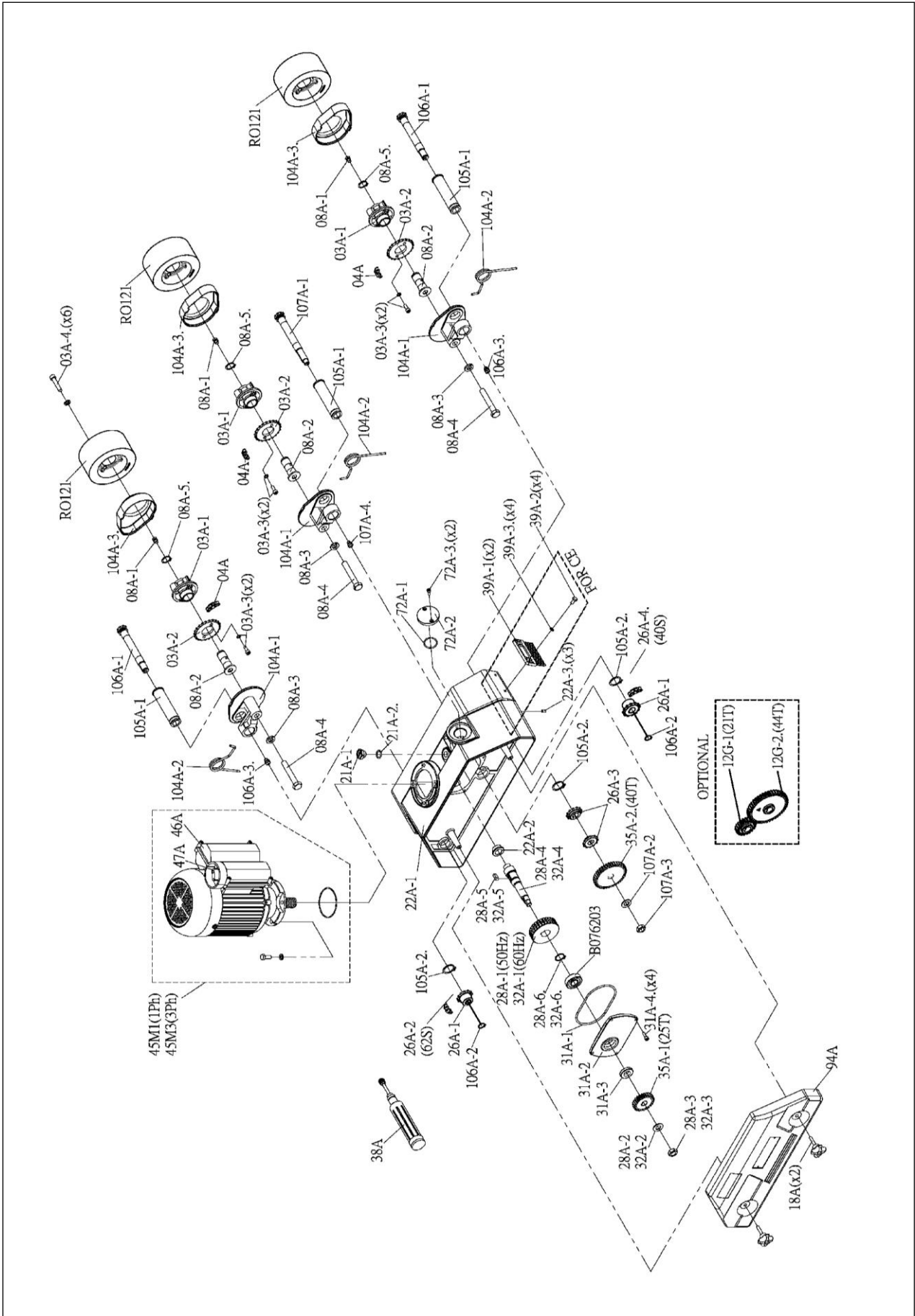
JPF-3 Universal stand Partlist and breakdown



JPF-3 Universal stand Partlist and breakdown

Part No.	Code No.	Description	Qty	Part No.	Code No.	Description	Qty	Part No.	Code No.	Description	Qty
51B	E50001A	Vertical Column Kit	1	58B-1	A200317	Overarm Cone	1	106B	106B	Elevating Bracket Kit	1
52B	E50002A	Overarm Kit	1	58B-2	G020005	Stud (M16-1.5P)	1	106B-1	A200316	Elevating Bracket	1
54B	G320093	Elevating Screw (T19-4Px330L)	1	58B-3	G020007A	Handle	1	106B-2	S601270	Hex Screw (M12-1.75Px70L)	2
55B	G320094	Extension Screw (T19-P4x500L)	1	58B-4	N810622	Lock Pin (6x22L)	1	106B-3	N050012	Lock Washer (M12)	2
56B	56B	Column Cap Kit	2	58B-5	N030012	Spring Washer (M12)	1	106B-4	N011225	Flat Washer (M12x25D)	2
56B-1	C020305A	Column Cap	1	58B-6.	S901250	Cap Screw (M12-1.75Px50L)	1	106B-5.	G020006A	Handle	2
56B-2.	G000005	Set Screw (M8-1.25Px12L)	3	59B	59B	Swivel Cone Kit	1	107B	107B	Base Kit	1
57B	57B	Overarm Cone Kit (408)	1	59B-1	A200318	Swivel Cone	1	107B-1	A200315	Column Base	1
57B-1	A200322	Overarm Cone (408)	1	59B-2	G020005	Stud (M16-1.5P)	1	107B-2	S601270	Hex Screw (M12-1.75Px70L)	1
57B-2	G020005	Stud (M16-1.5P)	1	59B-3	G020007A	Handle	1	107B-3	N050012	Lock Washer (M12)	1
57B-3	G020007A	Handle	1	59B-4.	N810622	Lock Pin (6x22L)	1	107B-4	N011225	Flat Washer (M12x25D)	1
57B-4	N810622	Lock Pin (6x22L)	1	83H	83H	Handle Kit	2	107B-5	G020006A	Handle	1
57B-5	N030012	Spring Washer (M12)	1	83H-1	U010139A	Handle w/ Bushing	1	107B-6	S601250	Hex Screw (M12-1.75Px50L)	4
57B-6.	S901250	Cap Screw (M12-1.75Px50L)	1	83H-2.	N810636	Lock Pin (6x36L)	1	107B-7.	N030012	Spring Washer (M12)	4
58B	58B	Overarm Cone Kit (308)	1	87A	U010011	Handle-Grip (M10-P1.5x70L)	2				

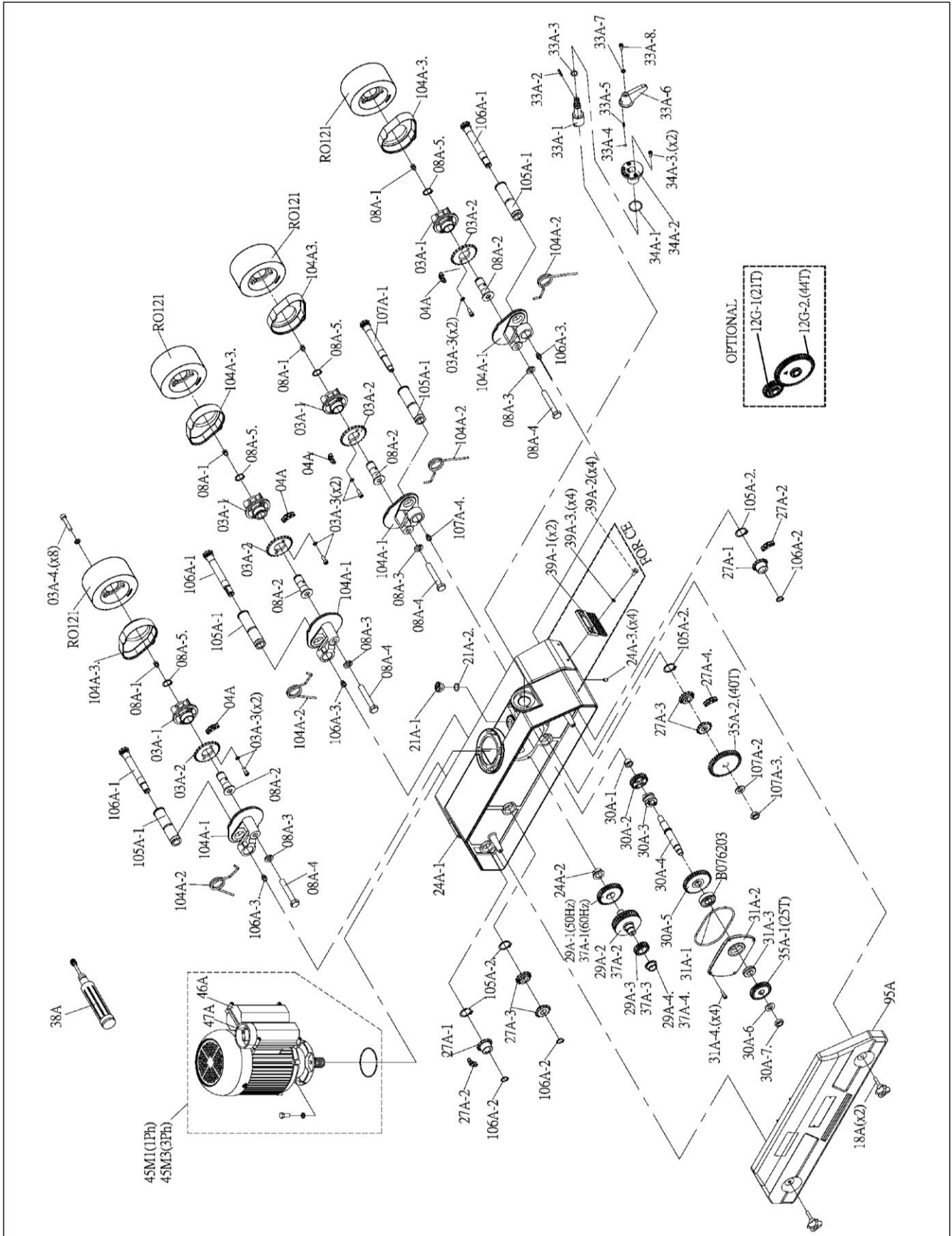
JPF-34 Partlist and breakdown



JPF-34 Partlist and breakdown

Part No.	Code No.	Description	Q'ty	Part No.	Code No.	Description	Q'ty	Part No.	Code No.	Description	Q'ty
B076203	B076203	Bearing(#6203)	1	26A-3	A500307	Double-Sprocket(12T)	2	39A-3.	N050057	Lock Washer (1/4"x1.4t)	2
03A	03A	Roller Supporter Kit	3	26A-4.	K330040	Chain (40S)	1	45M1	45M1	Motor w/ Switch 1HP.1	1
03A-1	C020333A	Roller Supporter	1	28A	28A	Worm Gear Kit 50Hz	1	45M3	45M3	Motor w/ Switch 1HP.3	1
03A-2	A500309	Sprocket	1	28A-1	C120008	Worm Gear (30T, 50Hz)	1	46A	46A	Switch Box	1
03A-3	S060616	Cap Screw (M6-1.0Px16L)	2	28A-2	N011225	Flat Washer (M12x25D)	1	47A	47A	Switch Kit	1
03A-4.	S060840	Cap Screw (M8-1.25Px40L)	2	28A-3	N11012H	Nut (M12-1.75P)	1	72A	72A	Gearbox Cap Kit (4S)	1
04A	K330026	Chain (26S)	3	28A-4	G320014	Wormgear Shaft	1	72A-1	Q010028	"O" Ring (S28)	1
08A	08A	Roller Spindle Kit	3	28A-5	K420618	Key (6x6x18L)	1	72A-2	U010037	Gearbox Cap	1
08A-1	T315106	Grease Nipple (M6-1.0Px1.0)	1	28A-6.	N510022	Snap Ring (22)	1	72A-3.	S900512	Cap Screw (M5-0.8Px12L)	2
08A-2	G320028	Roller Spindle	1	31A	31A	Wormgear-Box Cover Kit	1	94A	U010071-1	Housing Cover (3R)	1
08A-3	N030012	Spring Washer (M12)	1	31A-1	Q010102	"O" Ring (G102)	1	104A	104A	Sprocket Case Kit	3
08A-4	S601275	Hex Screw (M12-1.75Px75L)	1	31A-2	C020345	Wormgear Box Cover	1	104A-1	C020332-1	Sprocket Case	1
08A-5.	N510020	Snap Ring (20)	1	31A-3	Q021701	Oil Seal (17x32x7t)	1	104A-2	N950001	Spring (φ38x11.4)	1
12G	12G	GEAR SET (21T/44T)	1	31A-4.	S070516	Cap Screw (M5-0.8Px16L)	4	104A-3.	U010052	Case Cap	1
12G-1	A500344	Gear (21T)	1	32A	32A	Worm Gear Kit 60Hz	1	105A	105A	Tube Kit	3
12G-2.	A500345	Gear (44T)	1	32A-1	C120001	Worm Gear (38T, 60Hz)	1	105A-1	E270006	Tube	1
18A	U010051	Knob	2	32A-2	N011225	Flat Washer (M12x25D)	1	105A-2.	N510026	Snap Ring (26)	1
21A	21A	Oil-Cap Kit (M16)	1	32A-3	N11012H	Nut (M12-1.75P)	1	106A	106A	Sprocket Shaft Kit	2
21A-1	U010008	Oil Cap (16mm)	1	32A-4	G320014	Wormgear Shaft	1	106A-1	G320132	Sprocket Shaft	1
21A-2.	Q010012	"O" Ring (P12)	1	32A-5	K420618	Key (6x6x18L)	1	106A-2	N510015	Snap Ring (15)	1
22A	22A	Housing Frame Kit	1	32A-6.	N510022	Snap Ring	1	106A-3.	T315106	Grease Nipple (M6-1.0Px1.0)	1
22A-1	C020017	Housing Frame, 3R	1	35A	35A	Gear Kit (25T/40T)	1	107A	107A	Main Sprocket Shaft Kit	1
22A-2	A500301	Bushing (29DX23DX(9+3))	1	35A-1	A500310	Gear (25T)	1	107A-1	G320133	Main Sprocket Shaft	1
22A-3.	S100610	Set Screw (M6-1.0Px10L)	3	35A-2.	A500311	Gear (40T)	1	107A-2	N011225	Flat Washer (M12x25D)	1
26A	26A	Transmission Kit (3R)	1	38A	T344001	Grease Gun	1	107A-3	N11012H	Nut (M12-1.75P)	1
26A-1	A500303	Sprocket (12Tx3/8")	2	39A	39A	Brush Kit	2	107A-4.	T315106	Grease Nipple (M6-1.0Px1.0)	1
26A-2	K330062	Chain (62S)	1	39A-1	U010088	Brush	1	RO121	RO121	Roller (120D x 60, PCs)	3
				39A-2	S600612	Hex Screw (M6-1.0Px12)	2				

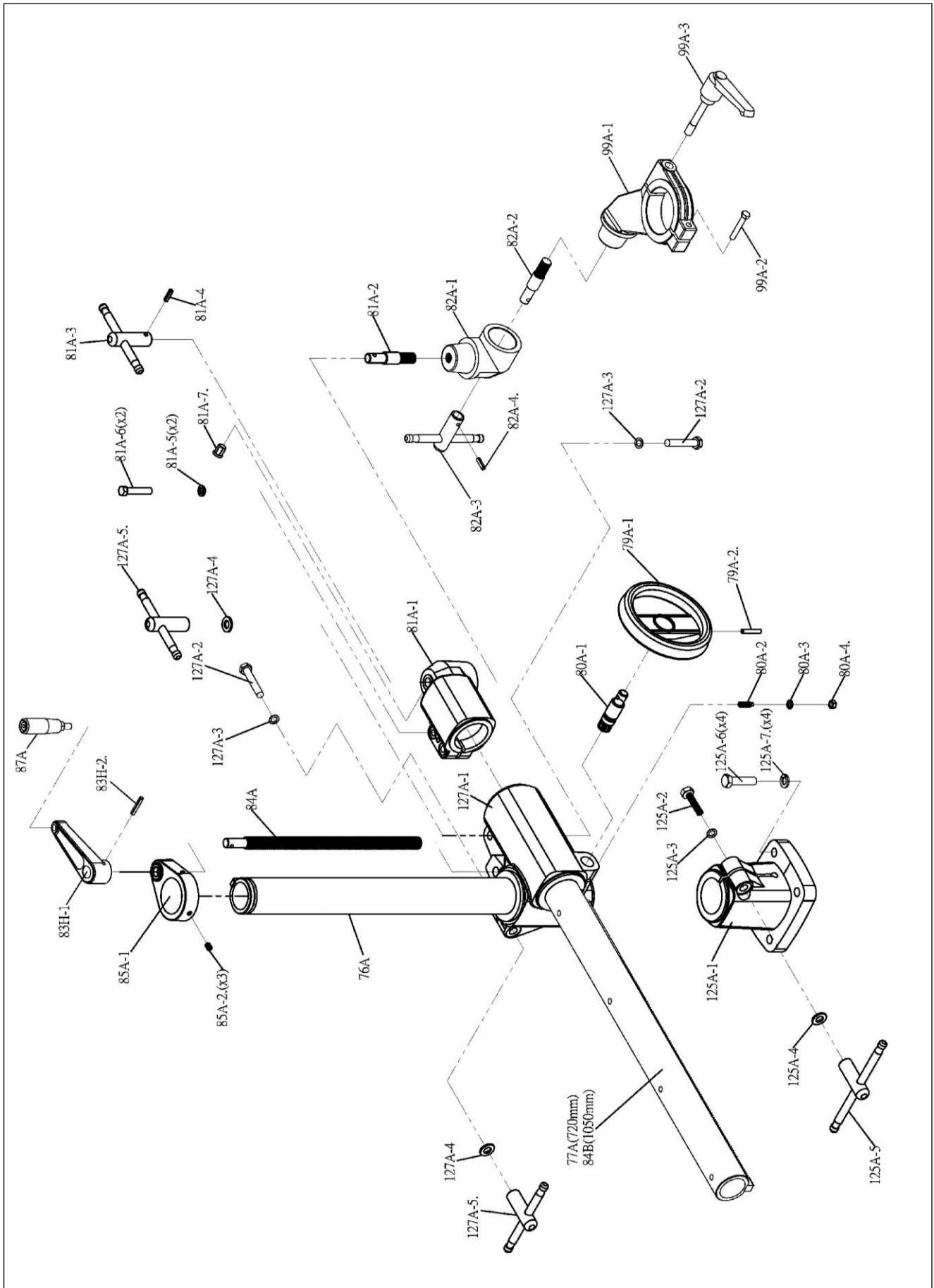
JPF-48 Partlist and breakdown



JPF-48 Partlist and breakdown

Part No.	Code No.	Description	Q'ty	Part No.	Code No.	Description	Q'ty	Part No.	Code No.	Description	Q'ty
B076203	B076203	Bearing 6203	1	29A-3	A500330	Gear (17T)	1	37A-1	A500329	Gear (31T)	1
03A	03A	Roller Supporter Kit	4	29A-4.	A500301	Bushing (29Dx23Dx(9+3))	1	37A-2	A460001	Worm Gear (60Hz, 38T)	1
03A-1	C020333A	Roller Supporter	1	30A	30A	Transmission Shaft Kit, 8S	1	37A-3	A500330	Gear (17T)	1
03A-2	A500309	Sprocket	1	30A-1	A500305	Bushing (20Dx17Dx(10+2))	1	37A-4.	A500301	Bushing (29Dx23Dx(9+3))	1
03A-3	S060616	Cap Screw (M6-1.0Px16L)	2	30A-2	A500320	Gear (20T)	1	38A	T344001	Grease Gun	1
03A-4.	S060840	Cap Screw (M8-1.25Px40L)	2	30A-3	A500318	Clutch	1	39A	39A	Brush Kit	2
04A	K330026	Chain (26S)	4	30A-4	G320069	Transmission Shaft	1	39A-1	U010088	Brush	1
08A	08A	Roller Spindle Kit(L)	4	30A-5	A500319	Gear (34T)	1	39A-2	S600612	Hex Screw (M6-1.0Px12)	2
08A-1	T315106	Grease Nipple	1	30A-6	N011225	Flat Washer (M12x25D)	1	39A-3.	N050057	Lock Washer (1/4"x1.4t)	2
08A-2	G320028	Roller Spindle	1	30A-7.	N11012H	Nut (M12-1.75P)	1	45M1	45M1	Motor w/ Switch 1HP.1	1
08A-3	N030012	Spring Washer	1	31A	31A	Wormgear Box Cover Kit	1	45M3	45M3	Motor w/ Switch 1HP.3	1
08A-4	S601275	Hex Screw	1	31A-1	Q010102	"O" Ring (G102)	1	46A	46A	Switch Box Kit (L)	1
08A-5.	N510020	Snap Ring	1	31A-2	C020345	Wormgear Box Cover	1	47A	47A	Switch Kit	1
12G	12G	GEAR SET (21T/44T, HD)	1	31A-3	Q021701	Oil Seal (17x32x7t)	1	95A	U010072-1	Housing Cover (AP4R, B)	1
12G-1	A500344	Gear (21T)	1	31A-4.	S070516	Cap Screw (M5-0.8Px16L)	4	104A	104A	Sprocket Case Kit	4
12G-2.	A500345	Gear (44T)	1	33A	33A	Speed Lever Kit (8S)	1	104A-1	C020332-1	Sprocket Case	1
18A	U010051	Knob (M6-1.0Px30L)	2	33A-1	G320015	Gear Lever	1	104A-2	N950001	Spring (φ38x11.4)	1
21A	21A	Oil-Cap Kit (M16)	1	33A-2	N810420	Lock Pin (4x20L)	1	104A-3.	U010052	Case Cap (L)	1
21A-1	U010008	Oil Cap (16mm)	1	33A-3	Q010012	"O" Ring (P12)	1	105A	105A	Tube Kit	4
21A-2.	Q010012	"O" Ring (P12)	1	33A-4	R090005	Steel Ball (5mm)	1	105A-1	E270006	Tube	1
24A	24A	Housing Frame Kit (4R)	1	33A-5	N930004	Comp. Spring (φ4.5xφ3.3)	1	105A-2.	N510026	Snap Ring (26)	1
24A-1	C020018	Housing Frame, 4R	1	33A-6	U010040	Speed Lever	1	106A	106A	Sprocket Shaft Kit	3
24A-2	A500301	Bushing (29Dx23Dx(9+3))	1	33A-7	N050005	Lock Washer	1	106A-1	G320132	Sprocket Shaft	1
24A-3.	S100610	Set Screw (M6-1.0Px10L)	4	33A-8.	S900512	Cap Screw (M5-0.8Px12L)	1	106A-2	N510015	Snap Ring (15)	1
27A	27A	Transmission Kit (4R)	1	34A	34A	Speed Lever Sleeve Kit, 8S	1	106A-3.	T315106	Grease Nipple (M6-1.0Px1.0)	1
27A-1	A500303	Sprocket (12Tx3/8")	2	34A-1	Q010028	"O" Ring (S28)	1	107A	107A	Main Sprocket Shaft Kit	1
27A-2	K330040	Chain (40S)	2	34A-2	C020085	Speed Lever Sleeve	1	107A-1	G320133	Main Sprocket Shaft	1
27A-3	A500307	Double-Sprocket (12T)	4	34A-3.	S900512	Cap Screw (M5-0.8Px12L)	2	107A-2	N011225	Flat Washer (M12x25D)	1
27A-4.	K330062	Chain (62S)	1	35A	35A	Gear Kit (25T/40T)	1	107A-3	N11012H	Nut (M12-1.75P)	1
29A	29A	Worm Gear Kit 50Hz, 8S	1	35A-1	A500310	Gear (25T)	1	107A-4.	T315106	Grease Nipple (M6-1.0Px1.0)	1
29A-1	A500329	Gear (31T)	1	35A-2.	A500311	Gear (40T)	1	RO121	RO121	Roller (120D x 60, PCs)	4
29A-2	A460002	Worm Gear (50Hz, 30T)	1	37A	37A	Worm Gear Kit 60Hz, 8S	1				

JPF-34/48 Universal stand Partlist and breakdown



JPF-34/48 Universal stand Partlist and breakdown

Part No.	Code No.	Description	Q'ty	Part No.	Code No.	Description	Q'ty	Part No.	Code No.	Description	Q'ty
76A	E580001A	Vertical Column Kit(560mm)	1	81A-7.	U010119	Cord Sheath	1	99A-2	S600850	Screw	1
77A	E580002A	Over Arm Kit (720mm)	1	82A	82A	Swivel Cone Kit	1	99A-3	T060003	Pull Handle	1
79A	79A	Handwheel Kit	1	82A-1	A200304	Swivel Cone	1	125A	125A	Base Kit	1
79A-1	U010082	Handwheel	1	82A-2	G020005	Stud	1	125A-1	A250401	Column Base	1
79A-2.	N810636	Lock Pin	1	82A-3	G020007A	Handle	1	125A-2	S601275	Hex Screw (M12-1.75Px75L)	1
80A	80A	Pinion Kit	1	82A-4.	N810622	Lock Pin	1	125A-3	N050012	Lock Washer (M12)	1
80A-1	G020001	Pinion	1	83H	83H	Handle Kit	1	125A-4	N011225	Washer	1
80A-2	G000007	Screw	1	83H-1	U010139A	Handle w/ Bushing	1	125A-5	G020010A	Handle(200mmL)	1
80A-3	N030008	Spring Washer	1	83H-2.	N810636	Lock Pin	1	125A-6	S601250	Hex Screw	4
80A-4.	N11008R	Nut	1	84A	G320090	Elevating Screw	1	125A-7.	N030012	Spring Washer	4
81A	81A	Over Arm Cone Kit	1	84B	E580003A	Over Arm Kit (1050mm)	1	127A	127A	Elevating Bracket Kit	1
81A-1	A250403	Over Arm Cone	1	85A	85A	Column Cape Kit	1	127A-1	A250402	Elevating Bracket	1
81A-2	G020005	Stud	1	85A-1	C020314A	Column Cape	1	127A-2	S601275	Hex Screw (M12-1.75Px75L)	2
81A-3	G020007A	Handle	1	85A-2.	G000005	Screw	3	127A-3	N050012	Lock Washer (M12)	2
81A-4	N810622	Lock Pin	1	87A	U010011	Handle-Grip (M10-P1.5x70L)	1	127A-4	N011225	Washer	2
81A-5	N030010	Washer	2	99A	99A	Motor Clamp kit	1	127A-5.	G020006A	Handle	2
81A-6	S601050	Screw	2	99A-1	A200305	Motor Clamp	1				