

JET

JPL-358

PEN LATHE

708329M

230/50/1

**PARTS LIST
ERSATZTEILLISTE
LISTE DE PIECES**

WMH Tool Group AG

Bahnstrasse 24, CH – 8603 Schwerzenbach

www.wmhtoolgroup.ch; info@wmhtoolgroup.ch

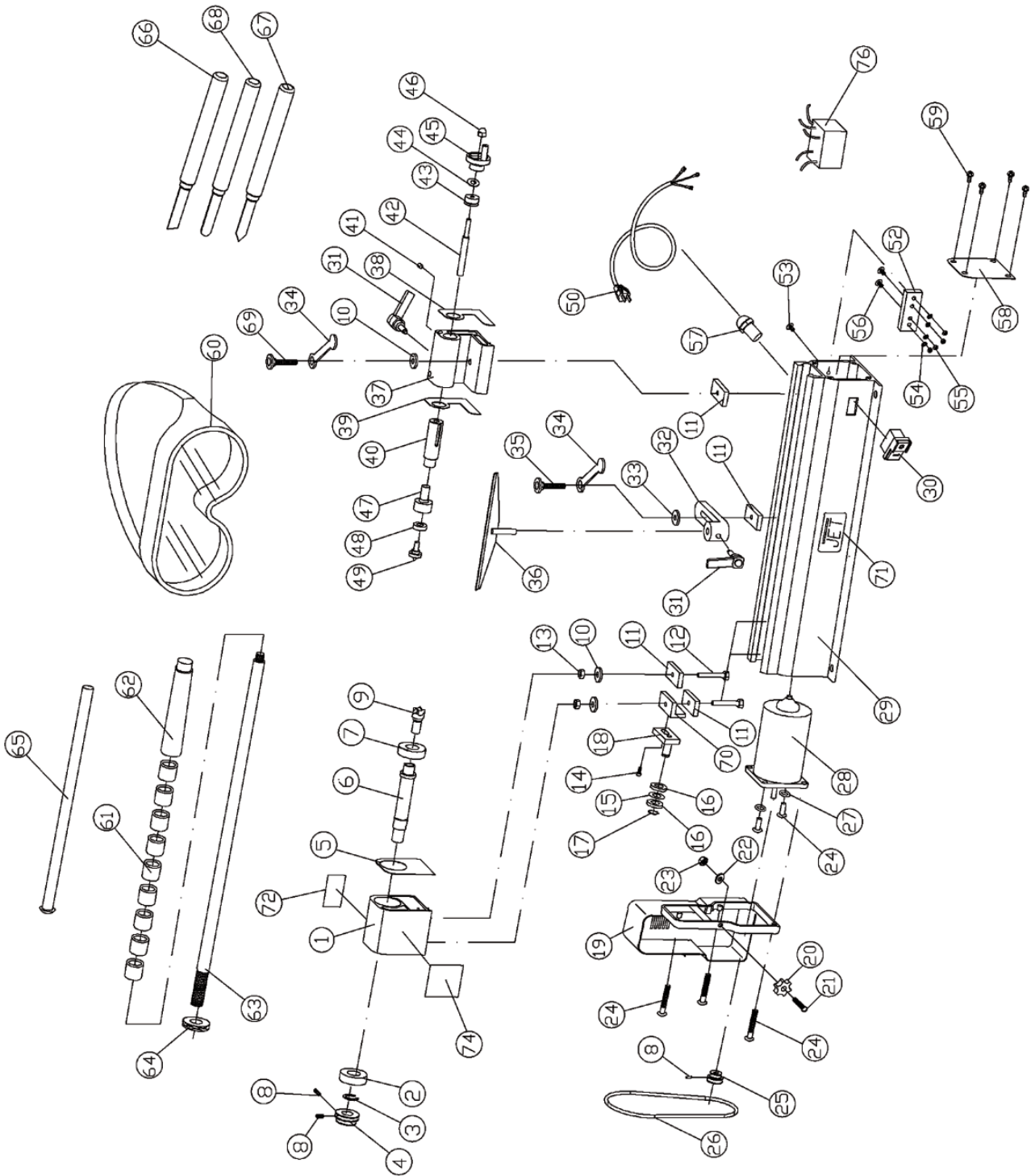
Tel +41 (0) 1 806 47 48

Fax +41 (0) 1 806 47 58

P-708329M 01/04



Parts Breakdown for JPL-358 Pen Lathe



Parts List for JPL-358 Pen Lathe

Index No.	Part No.	Description	Size	Quantity
	JPL358-HA	Headstock Assembly (Items 1 thru 8)		1
1	JPL358-101	Headstock		1
2	BB-6003ZZ	Ball Bearing	6003ZZ	1
3	JPL358-103	C-Ring	S-17	1
4	JPL358-104	Spindle Pulley		1
5	JPL358-105	End Cover		1
6	JPL358-106	Main Spindle		1
7	BB-6003VV	Ball Bearing	6003VV	1
8	TS-1521031	Socket Set Screw	M4x0.7Px8	3
9	JPL358-109	Spur Center		1
10	JPL358-110	Flat Washer	M6x16D	3
11	JPL358-111	Connect Plate		4
12	TS-1482061	Hex Cap Screw	M6x1.0Px30	2
13	TS-1540041	Hex Nut	M6x1.0Px30	2
14	TS-1502021	Socket Head Cap Screw	M5x0.8Px10	1
15	TS-1550061	Flat Washer	M8	1
16	BB-608ZZ	Ball Bearing	608ZZ	2
17	JPL358-117	C-Ring	S-8	1
18	JPL358-118	Joint Plate		1
19	JPL358-119	Pulley Cover		1
20	JPL358-120	Knob		1
21	TS-2284202	Phillips Pan Head Machine Screw	M4x0.7Px20	1
22	TS-1550021	Flat Washer	M4	1
23	TS-1541001	Nylon Nut	M4x0.7P	1
24	TS-2285162	Phillips Pan Head Machine Screw	M5x0.8Px16	5
25	JPL358-125	Motor Pulley		1
26	JPL358-126	Poly-V Belt	112H	1
27	TS-2361041	Lock Washer	M4	2
28	JPL358-128E	Motor		1
29	JPL358-129E	Bed		1
30	JWL1442-118E	Switch		1
31	JPL358-131	Handle Lock		2
32	JPL358-132	Tool Rest Base		1
33	JPL358-133	Flat Washer	M6x19D	1
34	JPL358-134	Special Wrench		2
35	JPL358-135	Bolt	M6x1.0Px25	1
36	JPL358-136	Tool Rest		1
37	JPL358-137	Tailstock		1
38	JPL358-138	Cover		1
39	JPL358-139	Cover		1
40	JPL358-140	Quill		1
41	JPL358-141	Threaded Stud	M6x1.0Px14	1
42	JPL358-142	Lead Screw		1
43	JPL358-143	Bush		1
44	JPL358-144	Copper Washer		1
45	JPL358-145	Handwheel		1
46	TS-2331051	Cap Nut	M5x0.8P	1

Parts List for JPL-358 Pen Lathe (continued)

Index No.	Part No.	Description	Size	Qty.
	JPL358-LCK	Live Center Kit (Items 47 thru 49)		1
47	JPL358-147	Live Center Body		1
48	BB-626VV	Ball Bearing	626VV	1
49	JPL358-149	Tip		1
50	JPL358-150E	Power Cord		1
52	JPL358-152	Copper Plate		1
53	TS-1532042	Phillips Pan Head Machine Screw	M4x0.7Px12	2
54	JPL358-154	Star Washer	M4	4
55	TS-1540021	Hex Nut	M4x0.7P	4
56	TS-1532032	Pan Head Screw	M4x0.7Px10	2
57	JPL358-157	Clamp		1
58	JPL358-158	Cover		1
59	TS-1533032	Phillips Pan Head Machine Screw	M5x0.8Px10	4
60	JML-79	Goggles		1
	JPL358-PMA	Pen Mandrel Assembly (Items 61 thru 64)		1
61	JPL358-161	Spacer		9
62	JPL358-162	Taper		1
63	JPL358-163	Shaft		1
64	JPL358-164	Lock Nut		1
65	JPL358-165	Knockout Rod		1
66	JPL358-166	Skew Chisel		1
67	JPL358-167	Parting Chisel		1
68	JPL358-168	Domed Scraper Chisel		1
69	JPL358-169	Bolt	M6x1.0Px30	1
70	JPL358-170	L Plate		1
71	JPL358-171	JET Logo		1
72	JPL358-172E	I.D Label		1
74	JPL358-174E	Speed Label		1
75	JPL358-175E	Motor Label		1
76	JPL358-176E	EMC		1

JPL-358 708329M

230/50/1

	colour of strands	Litzenfarben	couleur des cordons
BK	black	schwarz	noir
WH	white	weiß	blanc
BU	blue	blau	bleu
YE	yellow	gelb	jaune
RD	red	rot	rouge
BN	brown	braun	brun
GY	grey	grau	gris
GNYE	green-yellow	grün-gelb	vert-jaune
OG	orange	orange	orange
VT	violet	violett	violet

	meaning of symbol	Bedeutung der Zeichen	interprétation
M	motor	Motor	moteur
S	switch	Schalter	interrupteur
C	condenser	Kondensator	condensateur
E	electronic unit	Elektronik Einheit	unité électronique
F	fuse	Sicherung	fusible
RS	reversing switch	Drehrichtungsschalter	commu. droite/gauche
S	centrifugal switch	Fliehkraftschalter	déclencheur centrifuge
OL	overload cut-off	Überlastschuttschalter	déclencheur surcharge
LS	limit switch	Positionsendschalter	micro

