

# **J E T**

**JSMS-10L Slide miter saw**

**10000826M/U  
230/50-60/1**

**PARTS LIST  
ERSATZTEILLISTE  
LISTE DE PIECES**

**WMH Tool Group AG**

Bahnstrasse 24, CH – 8603 Schwerzenbach

[www.wmhtoolgroup.ch](http://www.wmhtoolgroup.ch); [info@wmhtoolgroup.ch](mailto:info@wmhtoolgroup.ch)

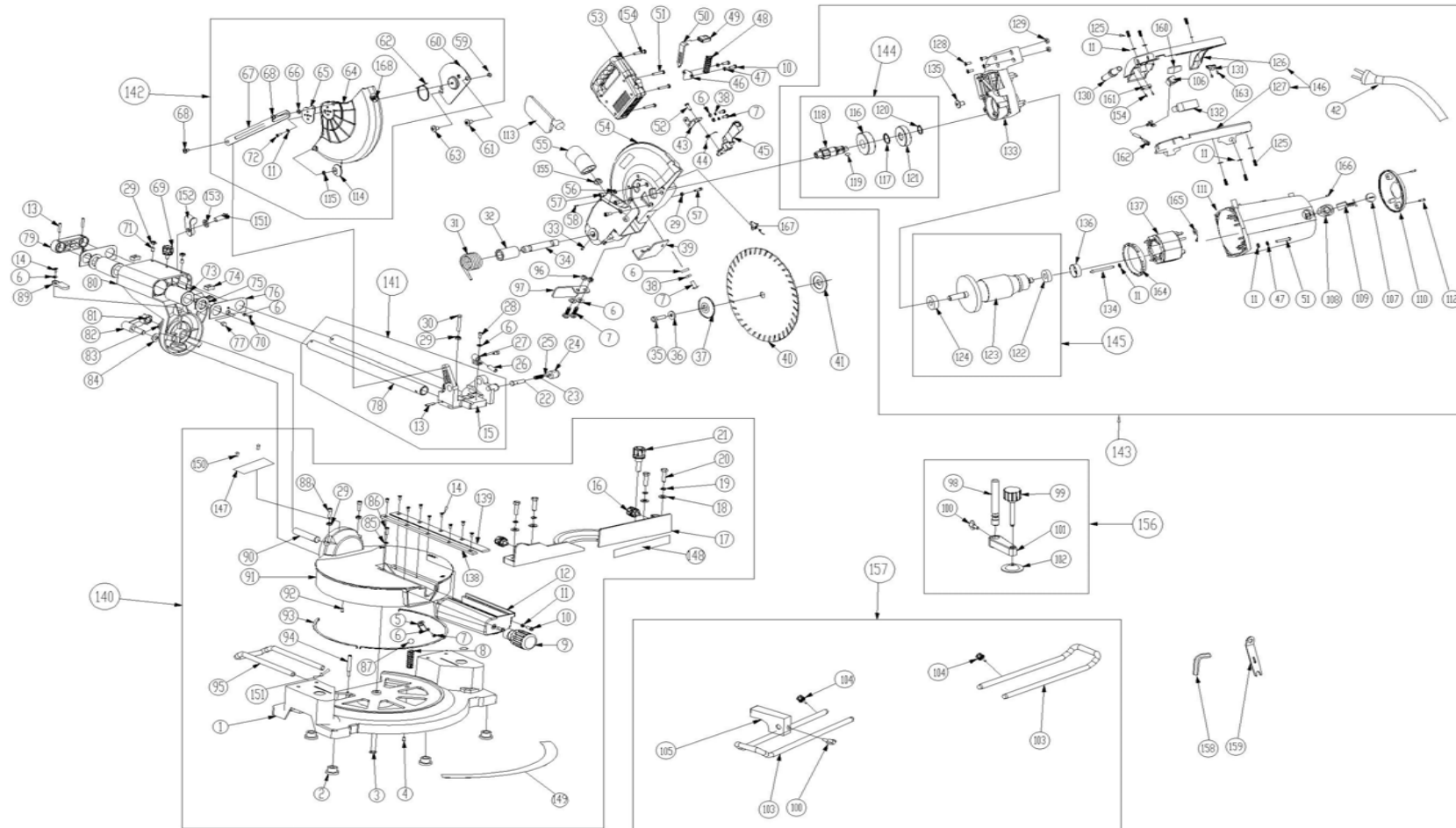
Tel +41 (0) 44 806 47 48

Fax +41 (0) 44 806 47 58



P-10000826M/U 05/06

# JSMS-10L 10Inch Slide Compound Mitre Saw with Laser



## Parts List For JSMS-10L Slide Miter Saw

| Index | Part No.     | Description        | Size   | Qty. |
|-------|--------------|--------------------|--------|------|
| 1     | JSMS10L -001 | Base               |        | 1    |
| 2     | JSMS10L -002 | Rubber feet        |        | 5    |
| 3     | JSMS10L -003 | Position shaft     |        | 1    |
| 4     | JSMS10L -004 | Screw              | M10×10 | 1    |
| 5     | JSMS10L -005 | Indicator          |        | 1    |
| 6     | JSMS10L -006 | Flat washer        | 4      | 10   |
| 7     | JSMS10L -007 | Screw              | M4×15  | 6    |
| 8     | JSMS10L -008 | Compress spring    |        | 1    |
| 9     | JSMS10L -009 | Miter knob         |        | 1    |
| 10    | JSMS10L -010 | Screw              | M5×15  | 4    |
| 11    | JSMS10L -011 | Flat washer        | 5      | 15   |
| 12    | JSMS10L -012 | Sleeve             |        | 1    |
| 13    | JSMS10L -013 | Spring pin         | 5×10   | 4    |
| 14    | JSMS10L -014 | Screw              | M4×10  | 11   |
| 15    | JSMS10L -015 | Body support       |        | 1    |
| 16    | JSMS10L -016 | Knob               |        | 2    |
| 17    | JSMS10L -017 | Fence              |        | 1    |
| 18    | JSMS10L -018 | Flat washer        | 8      | 4    |
| 19    | JSMS10L -019 | Spring washer      | 8      | 4    |
| 20    | JSMS10L -020 | Hex bolt           | M8×30  | 4    |
| 21    | JSMS10L -021 | Adjustable knob    |        | 1    |
| 22    | JSMS10L -022 | Pin                |        | 1    |
| 23    | JSMS10L -023 | Compression spring |        | 1    |
| 24    | JSMS10L -024 | Pin cap            |        | 1    |
| 25    | JSMS10L -025 | Spring pin         | 3×15   | 1    |
| 26    | JSMS10L -026 | Laser              |        | 1    |
| 27    | JSMS10L -027 | Laser holder       |        | 1    |
| 28    | JSMS10L -028 | Screw              | M5×10  | 2    |
| 29    | JSMS10L -029 | Hex nut            | M6     | 6    |
| 30    | JSMS10L -030 | Hex bolt           | M6×40  | 1    |
| 31    | JSMS10L -031 | Torque spring      |        | 1    |
| 32    | JSMS10L -032 | Sleeve             |        | 1    |
| 33    | JSMS10L -033 | Screw              | M5×10  | 2    |
| 34    | JSMS10L -034 | Pin shaft          |        | 1    |
| 35    | JSMS10L -035 | Hex bolt           | M8×25  | 1    |
| 36    | JSMS10L -036 | Washer             |        | 1    |
| 37    | JSMS10L -037 | Out flange         |        | 1    |
| 38    | JSMS10L -038 | Spring washer      | 4      | 3    |
| 39    | JSMS10L -039 | Guard              |        | 1    |
| 40    | JSMS10L -040 | Saw blade          |        | 1    |
| 41    | JSMS10L -041 | Inner flange       |        | 1    |
| 42    | JSMS10L -042 | Power cord         |        | 1    |
| 43    | JSMS10L -043 | Fix plate          |        | 1    |
| 44    | JSMS10L -044 | Torque spring      |        | 1    |
| 45    | JSMS10L -045 | Safety plate       |        | 1    |
| 46    | JSMS10L -046 | Cover              |        | 1    |
| 47    | JSMS10L -047 | Spring washer      | 5      | 6    |
| 48    | JSMS10L -048 | Spring             |        | 1    |
| 49    | JSMS10L -049 | Shaft lock cap     |        | 1    |
| 50    | JSMS10L -050 | Shaft lock         |        | 1    |
| 51    | JSMS10L -051 | Screw              | M5×30  | 8    |
| 52    | JSMS10L -052 | Screw              | M4X14  | 1    |
| 53    | JSMS10L -053 | Handle             |        | 1    |

|     |              |                  |        |   |
|-----|--------------|------------------|--------|---|
| 54  | JSMS10L -054 | Blade case       |        | 1 |
| 55  | JSMS10L -055 | Dust port        |        | 1 |
| 56  | JSMS10L -056 | Spring washer    | 6      | 3 |
| 57  | JSMS10L -057 | Screw            | M6×20  | 3 |
| 58  | JSMS10L -058 | Tapping screw    | M4×52  | 1 |
| 59  | JSMS10L -059 | Nut              | M5     | 1 |
| 60  | JSMS10L -060 | Fix plate        |        | 1 |
| 61  | JSMS10L -061 | Screw            |        | 1 |
| 62  | JSMS10L -062 | Torque spring    |        | 1 |
| 63  | JSMS10L -063 | Screw            |        | 1 |
| 64  | JSMS10L -064 | Movable guard    |        | 1 |
| 65  | JSMS10L -065 | Center plate     |        | 1 |
| 66  | JSMS10L -066 | Washer           |        | 1 |
| 67  | JSMS10L -067 | Rod              |        | 1 |
| 68  | JSMS10L -068 | Screw            |        | 2 |
| 69  | JSMS10L -069 | Knob             |        | 1 |
| 70  | JSMS10L -070 | Screw            | M4×10  | 2 |
| 71  | JSMS10L -071 | Screw            | M6×15  | 4 |
| 72  | JSMS10L-072  | Screw            | M5×15  | 1 |
| 73  | JSMS10L -073 | Linear bearing   | LM25UU | 2 |
| 74  | JSMS10L -074 | Cushion          |        | 4 |
| 75  | JSMS10L -075 | Wool felt        |        | 4 |
| 76  | JSMS10L -076 | Plate            |        | 2 |
| 77  | JSMS10L -077 | Pin              |        | 2 |
| 78  | JSMS10L -078 | Sliding bar      |        | 2 |
| 79  | JSMS10L -079 | Joint holder     |        | 1 |
| 80  | JSMS10L -080 | Pivot            |        | 1 |
| 81  | JSMS10L -081 | Nut              | M16    | 1 |
| 82  | JSMS10L -082 | Bevel knob       |        | 1 |
| 83  | JSMS10L -083 | Flat washer      | 16     | 1 |
| 84  | JSMS10L -084 | Flat washer      | 10     | 1 |
| 85  | JSMS10L -085 | Washer           | 6      | 1 |
| 86  | JSMS10L -086 | Screw            | M6     | 1 |
| 87  | JSMS10L -087 | Steel ball       | φ8     | 1 |
| 88  | JSMS10L -088 | Screw            | M6×35  | 2 |
| 89  | JSMS10L -089 | Indicator        |        | 1 |
| 90  | JSMS10L -090 | Shaft            |        | 1 |
| 91  | JSMS10L -091 | Work table       |        | 1 |
| 92  | JSMS10L -092 | Screw            | M6×15  | 1 |
| 93  | JSMS10L -093 | Steel C-washer   |        | 3 |
| 94  | JSMS10L -094 | Screw            |        | 1 |
| 95  | JSMS10L -095 | Support          |        | 1 |
| 96  | JSMS10L -096 | Nut              | M4     | 2 |
| 97  | JSMS10L -097 | Laser guard      |        | 1 |
| 98  | JSMS10L -098 | Pole             |        | 1 |
| 99  | JSMS10L -099 | Knob             |        | 1 |
| 100 | JSMS10L -100 | Butterfly knob   |        | 2 |
| 101 | JSMS10L -101 | Pole holder      |        | 1 |
| 102 | JSMS10L -102 | Clamp plate      |        | 1 |
| 103 | JSMS10L -103 | Extension wing   |        | 2 |
| 104 | JSMS10L -104 | Knob             |        | 2 |
| 105 | JSMS10L -105 | Fence            |        | 1 |
| 106 | JSMS10L -106 | Laser switch     |        | 1 |
| 107 | JSMS10L -107 | Carbon brush cap |        | 2 |
| 108 | JSMS10L -108 | Brush holder     |        | 2 |

|     |              |                              |            |   |
|-----|--------------|------------------------------|------------|---|
| 109 | JSMS10L -109 | Carbon brush                 |            | 2 |
| 110 | JSMS10L -110 | Motor rear cover             |            | 1 |
| 111 | JSMS10L -111 | Motor housing                |            | 1 |
| 112 | JSMS10L -112 | Tapping screw                | ST4.2×10   | 2 |
| 113 | JSMS10L -113 | Dust bag                     |            | 1 |
| 114 | JSMS10L -114 | Roller                       |            | 1 |
| 115 | JSMS10L -115 | Clip                         |            | 1 |
| 116 | JSMS10L -116 | Bearing                      | 6304 – 2RZ | 1 |
| 117 | JSMS10L -117 | Retainer                     | φ20        | 1 |
| 118 | JSMS10L -118 | Spindle                      |            | 1 |
| 119 | JSMS10L -119 | Key                          | 5×10       | 1 |
| 120 | JSMS10L -120 | Retainer                     | φ16        | 1 |
| 121 | JSMS10L -121 | Gear                         |            | 1 |
| 122 | JSMS10L -122 | Bearing                      | 6200       | 1 |
| 123 | JSMS10L -123 | Rotor                        |            | 1 |
| 124 | JSMS10L -124 | Bearing                      | 6201       | 1 |
| 125 | JSMS10L -125 | Tapping screw                | ST4.2×18   | 6 |
| 126 | JSMS10L -126 | Handle upper cover           |            | 1 |
| 127 | JSMS10L -127 | Handle lower cover           |            | 1 |
| 128 | JSMS10L -128 | Screw                        | M5×10      | 4 |
| 129 | JSMS10L -129 | Nut                          | M5         | 4 |
| 130 | JSMS10L -130 | Power cord sleeve            |            | 1 |
| 131 | JSMS10L -131 | Transformer                  |            | 1 |
| 132 | JSMS10L -132 | Switch                       |            | 1 |
| 133 | JSMS10L -133 | Gear box                     |            | 1 |
| 134 | JSMS10L -134 | Screw                        | M5×70      | 2 |
| 135 | JSMS10L -135 | Screw                        |            | 1 |
| 136 | JSMS10L -136 | Anti-vibration cover         |            | 1 |
| 137 | JSMS10L -137 | Stator                       |            | 1 |
| 138 | JSMS10L -138 | Left table insert            |            | 1 |
| 139 | JSMS10L -139 | Right table insert           |            | 1 |
| 140 | JSMS10L -140 | Base assembly                |            | 1 |
| 141 | JSMS10L -141 | Body support assembly        |            | 1 |
| 142 | JSMS10L -142 | Movable guard assembly       |            | 1 |
| 143 | JSMS10L -143 | Motor complete assembly 230V |            | 1 |
| 144 | JSMS10L -144 | Spindle assembly             |            | 1 |
| 145 | JSMS10L -145 | Rotor assembly               |            | 1 |
| 146 | JSMS10L -146 | Handle assembly              |            | 1 |
| 147 | JSMS10L -147 | Bevel scale                  |            | 1 |
| 148 | JSMS10L -148 | Length scale                 |            | 1 |
| 149 | JSMS10L -149 | Miter scale                  |            | 1 |
| 150 | JSMS10L -150 | Rivet                        | Ø2×3       | 2 |
| 151 | JSMS10L -151 | Screw                        | M4×10      | 3 |
| 152 | JSMS10L -152 | Clip                         |            | 1 |
| 153 | JSMS10L -153 | Big washer                   | 4          | 1 |
| 154 | JSMS10L -154 | Tapping screw                | ST4.2×12   | 6 |
| 155 | JSMS10L -155 | Cover                        |            | 1 |
| 156 | JSMS10L -156 | Clamp assembly               |            | 1 |
| 157 | JSMS10L -157 | Extension wing assembly      |            | 1 |
| 158 | JSMS10L -158 | Wrench                       | 6          | 1 |
| 159 | JSMS10L -159 | Wrench                       |            | 1 |
| 160 | JSMS10L -160 | Capacitor                    | CB244-B    | 1 |
| 161 | JSMS10L -161 | Strain relief                |            | 1 |
| 162 | JSMS10L -162 | Wire clip(A) assembly        |            | 1 |
| 163 | JSMS10L -163 | Tapping screw                | ST2.9×8    | 2 |
| 164 | JSMS10L -164 | Baffle plate                 |            | 1 |
| 165 | JSMS10L -165 | Magnet ring Assembly         | Ø8         | 4 |
| 166 | JSMS10L -166 | Screw                        | M5×10      | 2 |
| 167 | JSMS10L -167 | Wire clip(B) assembly        |            | 1 |
| 168 | JSMS10L -168 | Warning label                |            | 3 |