

JET

JTS-250

JTS-250S

CIRCULAR SAW

708775KM / 708775KT
230/50/1 / 400/50/3

708777KM / 708777KT
230/50/1 / 400/50/3

PARTS LIST

ERSATZTEILLISTE

LISTE DE PIECES

WMH Tool Group AG

Bahnstrasse 24, CH – 8603 Schwerzenbach

www.wmhtoolgroup.ch; info@wmhtoolgroup.ch

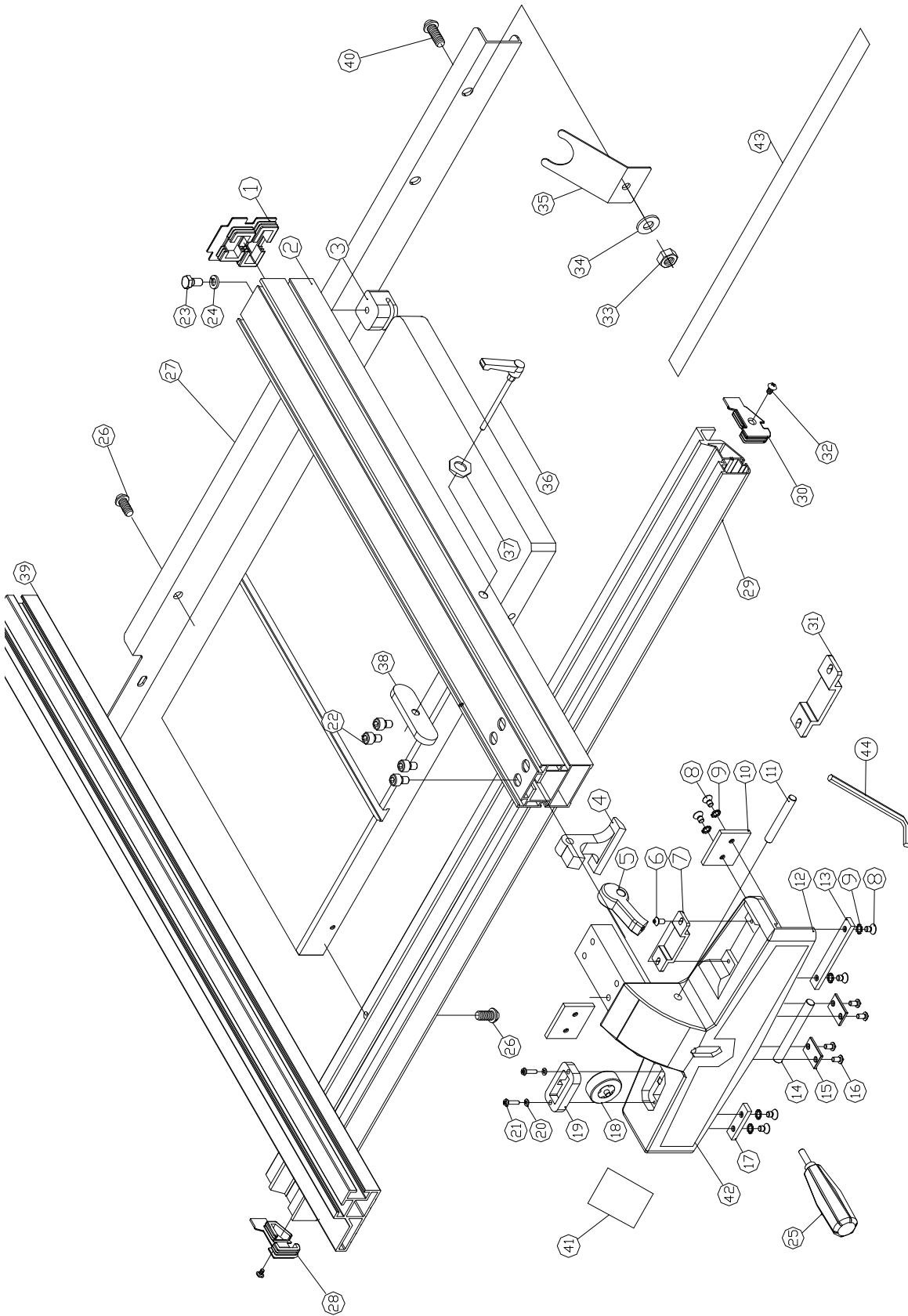
Tel +41 (0) 1 806 47 48

Fax +41 (0) 1 806 47 58



P-708770 12/03

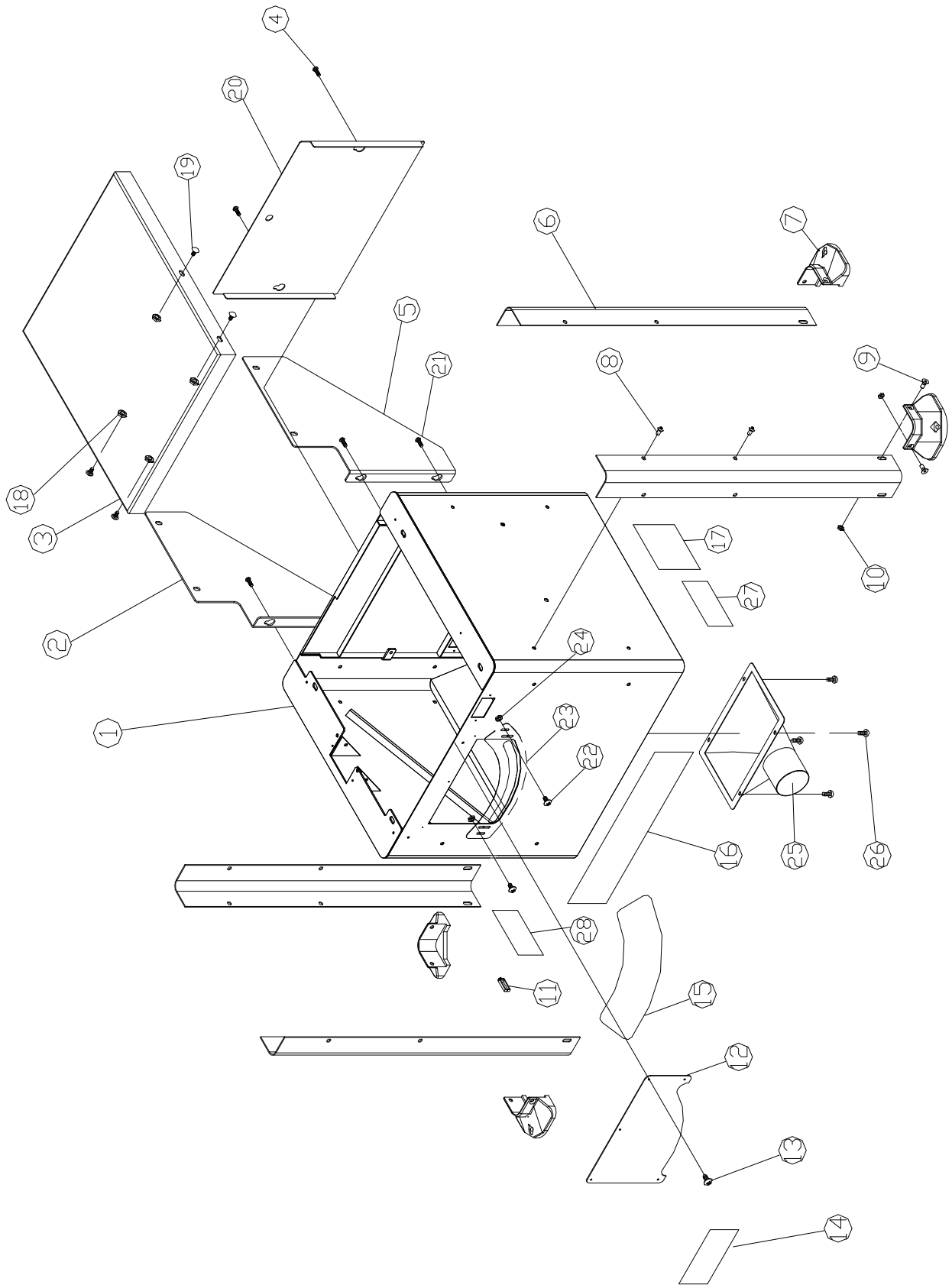
Fence Assembly



**Parts List for the JWSS-10LFR
Fence Assembly**

Index No.	Part No.	Description	Size	Qty
1	200396	Rear Cover		1
2	200507	Fence		1
3	200397	Fence Hook		1
4	200393	Locating Clamp		1
5	200390	Clamp Cam		1
6	SP059200	Socket Head Screw	M5 x 8	2
7	200439	Enlarge Window		1
8	SN059200	Countersunk Head Bolt	M5 x 8	8
9	WE050000	Star Washer	M5	8
10	200384	Wear Pad		2
11	200392	Pin		1
12	200451	Fence Body		1
13	200387	Wear Pad		1
14	200391	Pin		1
15	200394	Plate		2
16	JWSS10-16	Hex Socket Button Screw	M5 x 10	4
17	200386	Wear Pad		1
18	200389	Micro-Adjust Roller		1
19	200388	Upper Block		1
20	TS-1551021	Lock Washer	M4	2
21	SP049400	Hex Socket Button Screw	M4 x 16	2
22	TS-1504031	Hex Socket Cap Screw	M8 x 16	4
23	TS-1490011	Hex Head Bolt	M8 x 12	1
24	TS-1551061	Lock Washer	M8	1
25	200378	Handle		1
26	SJ089400	Socket Head Screw	M8x 16	4
27	200362	U Rear Rail	30"	1
	200429	U Rear Rail	52"	1
28	200508	Side Cover (L)		1
29	200361	Front Rail	30"	1
	200428	Front Rail	52"	1
30	200509	Side Cover (R)		1
31	200438	Enlarge Window		1
32	ST049200	Tapping Screw	M4x 8	2
33	NH081300	Nut	M8	1
34	WF082320	Flat Washer	M8	1
35	200522	U Support		1
36	200534	Lock Knob		1
37	WF083030	Flat Washer	M8	1
38	200527	Moving Plate		1
39	200526	Fence (AL)		1
40	SJ089400	Socket Head Screw	M8x 16	1
41	LM000627	JET Logo		1
42	LM000628	Fence Body Label		1
43	LM000698	30" Scale	30"	1
	JWSS10-FC	Fence Complete (not shown)		1
	AH200395	Hardware Bag (not shown)		1
44	TS080001	Hex "L" Wrench	M8	1

Cabinet Assembly



Cabinet Assembly

Index No.	Part No.	Description	Size	Qty
1	200525	Stand		1
2	200519	Support		1
3	200512	Extension Wing		1
4	TS-1515041	Socket Head Bolt	M8 x 30	2
5	200520	Support		1
6	200401	Leg		4
7	200427	Foot		4
8	SJ089300	Socket Head Bolt	M8 x 12	16
9	SM080400	Countersunk Head Screw	M8 x 20	8
10	NF081300	Flange Nut	M8	8
11	998660	Wire Clips	WS-3	2
12	200432	Front Cover		1
13	ST049200	Tapping Screw	M4x 8(B)	5
14	LM000792	Warning Label		1
15	LM000634	Angle Scale		1
16	LM000629	JET Label		1
17	LM000791	Warning Label		1
18	NF081300	Flange Nut	M8	4
19	SC089300	Carriage Screw	M8x12	4
20	200521	Door Plate		1
21	SG080300	Hex Head Flange Bolt	M8 x 15	4
22	SN050200	Countersunk Head Bolt	M5x10	2
23	200541	To Hide Plate		1
24	NF050800	Flange Nut	M5	2
25	200577	Hopper		1
26	TS-1534032	Pan Head Bolt	M6 x 10	4
27	LM000794	JET I.D. Label	Only 1 Phase	1
	LM000795	JET I.D. Label	Only 3 Phase	1
28	LM000793	Warning Label		1

Table Assembly

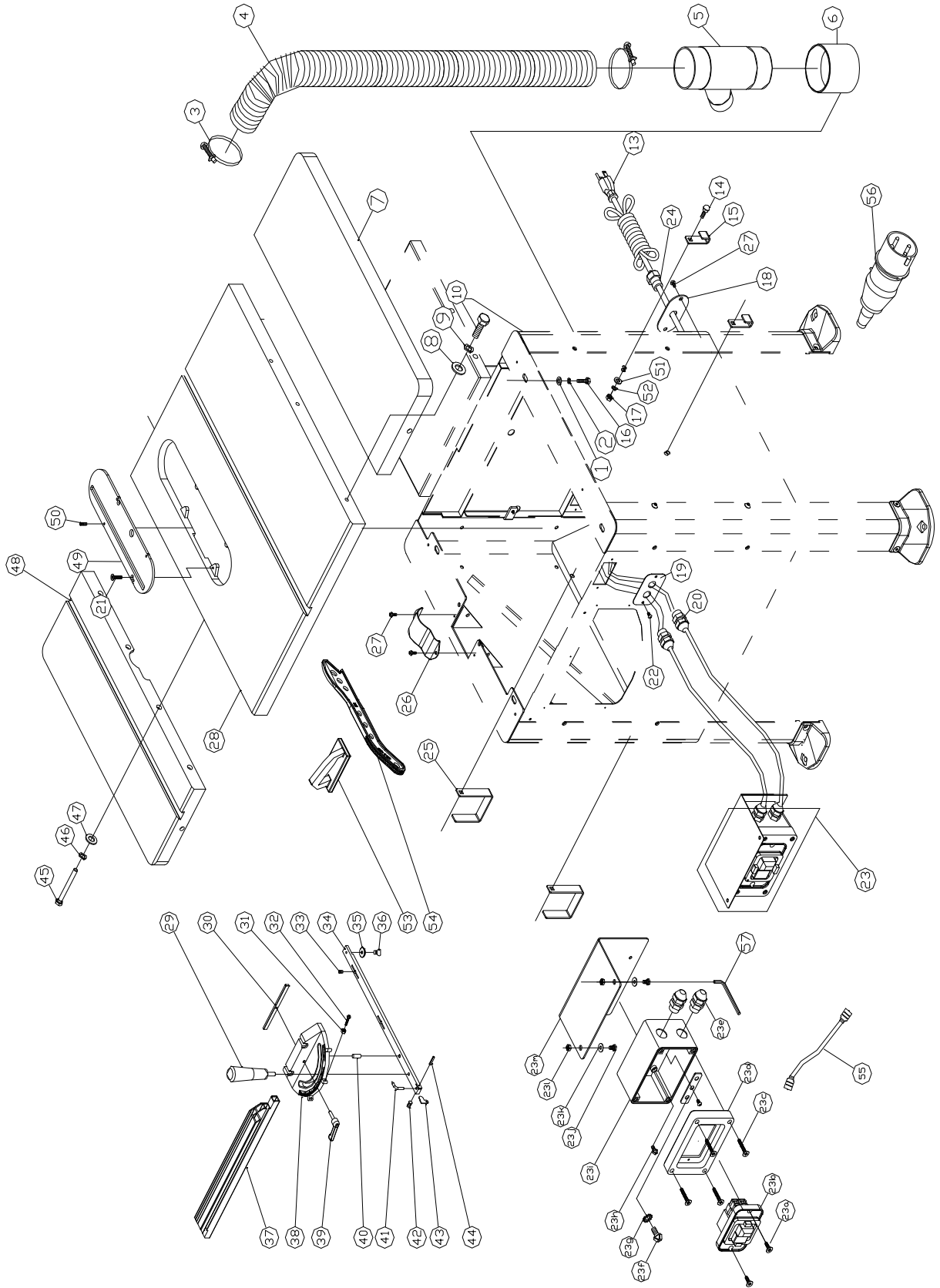
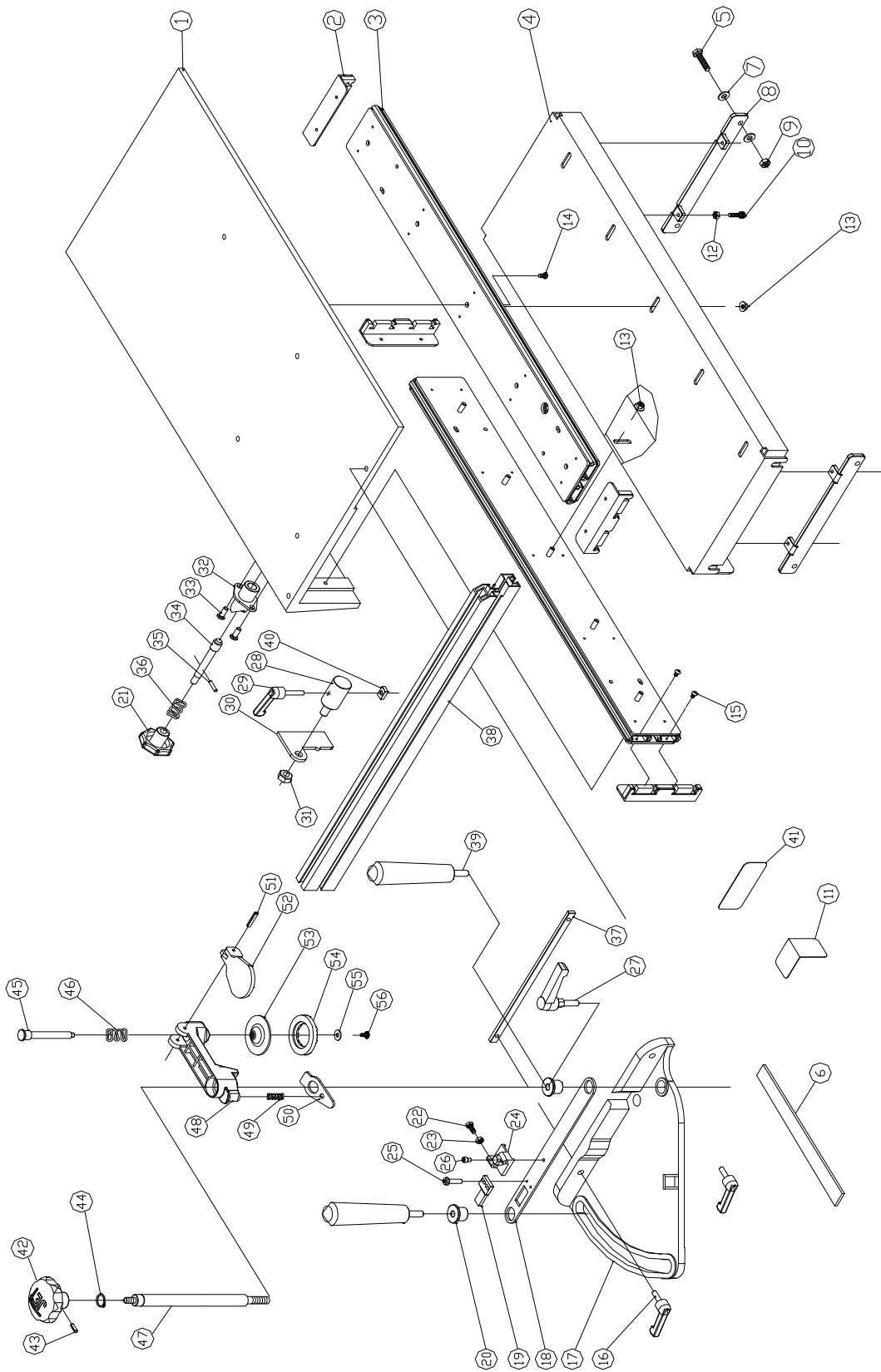


Table Assembly

Index No.	Part No.	Description	Size	Qty
1	TS-1550061	Flat Washer	M8	4
2	TS-1551061	Lock Washer	M8	4
3	200535	Ring Clamp		2
4	200536	Hose		1
5	200515	Adapter		1
6	200516	Adapter		1
7	290004	Extension Wing (R)		1
8	TS-1550071	Flat Washer	M10	3
9	TS-1551071	Lock Washer	M10	3
10	TS-1491041	Hex Cap Bolt	M10 x 30	3
13	IC290003	Power Cord	H05 RN-F3G	1
	IC290004	Power Cord	H07 RN-F4G	1
14	SC089400	Carriage Screw	M8 x 16	4
15	200406	Miter Gauge Hook		2
16	TS-1490031	Hex Head Bolt	M8 x 20	4
17	TS-1540061	Hex Nut	M8	4
18	200538	Strain Relief Plate		2
19	135081	Strain Relief Plate		1
20	709411	Strain Relief		2
21	SN050400	Countersunk Head Bolt	M5x 20	2
22	ST049200	Self Tapping Screw	M4 x 8	2
23	JWSS10-23A	ON/OFF Switch Assembly	230V,50Hz,1Ph	1
	JWSS10-23B	ON/OFF Switch Assembly	400V,50Hz,3Ph	1
23a	ST040204	Self Tapping Screw	M4 x 10	2
23b	60A-419E	KJD-18 Switch	230V, 50Hz, 1Ph	1
	60A-419AE	KJD-18 Switch	400V, 50Hz, 3Ph	1
23c	ST040504	Self Tapping Screw	M4 x 25	4
23d	170237	CE Switch Box Upper Cover		1
23e	709411	Strain Relief		2
23f	SP550200	Pan Head Bolt	3/16"x5/16"	2
23g	WE050000	Start Washer	M5	2
23h	SP050200	Pan Head Bolt	M5x10	4
23i	170238	CE Switch Box		1
23j	SJ060200	Socket Head Screw	M6x10	2
23k	TS1550041	Flat Washer	M6	2
23l	TS1540041	Hex Nut	M6	2
23m	200524	Switch Plate		1
24	709411	Strain Relief		2
25	200547	Fence Hook		2
26	200352	Guard		1
27	SF059200	Pan Head Bolt (Flange)	M5 x 8	4
28	JWSS10CE-28	Table		1
29	612150	Handle		1
30	200405	Fixed Bar		1
31	NH050800	Hex Nut	M5	3
32	SP050400	Pan Head Bolt	M5 x 20	3
33	SS088200	Set Screw	M8 x 6	2
34	200412	Guide Bar		1
35	200156	Guide Ring		1
36	SN069200	Countersunk Head Bolt	M6 x 8	1
37	200571	Miter Gauge Fence		1
38	200416	Miter Gauge Body		1

39	200417	Locking Handle	M6 x 28	1
40	150031	Steel Pin		1
41	200160	Pointer		1
42	TS-1522011	Set Screw	M5 x 5	1
43	200158	Locating Piece		1
44	PS030800	Spring Pin	3 x 8	1
	ZBGRI004	Miter Gauge Assembly(Index No. 29-44)		1
45	SH102604	Hex Head Bolt	M10 x 120	4
46	TS-1551071	Lock Washer	M10	4
47	TS-1550071	Flat Washer	M10	4
48	200398	Extension Wing w/ Miter Slot (L)		1
49	200518	Table Insert		1
50	TS-1523031	Set Screw	M6 x 10	4
51	TS-1550061	Flat Washer	M8	4
52	TS-1551061	Lock Washer	M8	4
53	200546	Push Wood		1
54	200544	Push Stick		1
55	IC290005	Wire		1
56	IC290006	Plug	400V 3Ph CCE type	1
57	TS025001	Hex "L" Wrench	M2.5	1

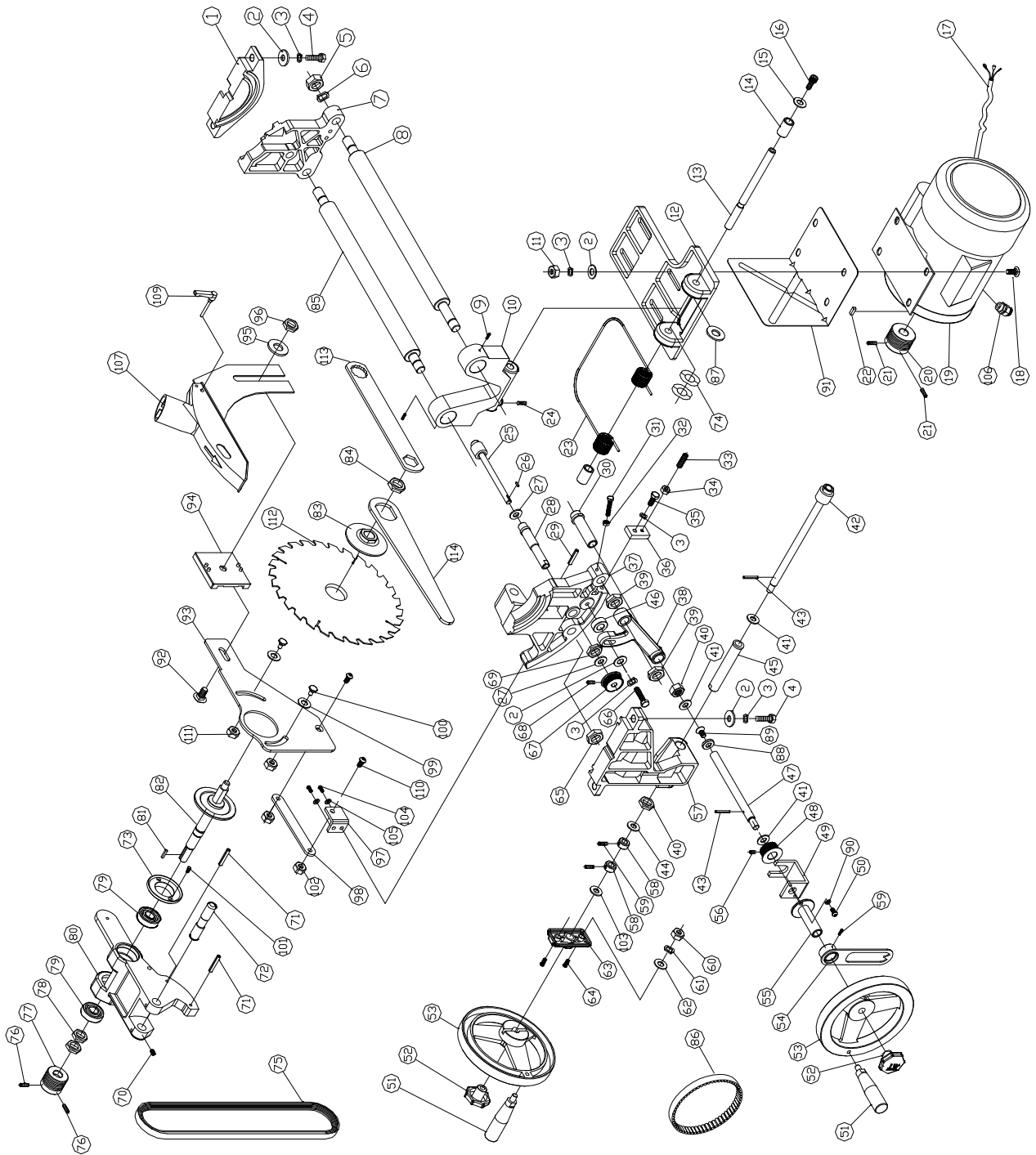
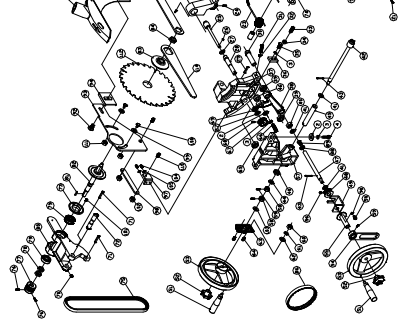
Sliding Table Assembly



Sliding Table Assembly

Index No.	Part No.	Description	Size	Qty
1	200537	Sliding Table		1
2	200411	Wiper Bracket w/Wiper		4
3	200333	Sliding Rail		2
4	200365	Sliding Table Plate		1
5	TS-1490041	Hex Head Bolt	M8 x 25	4
6	200430	Block		1
7	TS-1550061	Flat Washer	M8	8
8	200363	Adjustable Plate		2
9	TS-1540061	Hex Nut	M8	4
10	TS-1503061	Hex Socket Head Bolt	M6 x 25	4
11	200374	90° Adjustable Plate	0.02"	2
12	NH061000	Nut	M6	4
13	NF061000	Flange Nut	M6	10
14	SJ069200	Socket Head Bolt	M6 x 8	10
15	SF049100	Pan Head Bolt	M4 x 6	8
16	200414	Locking Handle	M6 x 22	2
17	200569	Miter Gauge Body		1
18	200336	Indicator Bar		1
19	200337	Cursor		1
20	200335	Bushing		2
21	JWSS10-51	Knob	M8	1
22	SH050400	Hex Head Bolt	M5 x 20	2
23	TS-1540031	Hex Nut	M5	2
24	200344	Stop Block		1
25	SP049200	Pan Head Bolt	M4 x 8	2
26	SR050200	Hex Socket Screw	M5x10	2
27	200426	Lock Knob	M10x33	1
28	200343	Locate Shaft		1
29	200415	Locking Handle	M6 x 30	1
30	200342	Fence Stop		1
31	TS-1541041	Nylon Lock Nut	M10	1
32	200326	Flange		1
33	SJ069300	Socket Head Screw	M6 x 12	2
34	200328	Locating Shaft		1
35	PP03000	Pin	3 x 20	1
36	200379	Spring		1
37	200338	Moving Shaft		1
38	200501	Miter Fence		1
39	200433	Handle	M10 x 33	2
40	NS061000	Square Nut	M6	1
41	200375	Adjustable Plate	0.02"	2
42	JWSS10-51	Knob	M8	1
43	PS032000	Spring Pin	3 x 20	1
44	RS160000	Retaining Ring	S16	1
45	200348	Clamp Rod		1
46	200376	Spring		1
47	200563	Support Shaft		1
48	200349	Clamp Body		1
49	200377	Spring		1
50	200351	Quick Release		1
51	PS042800	Spring Pin	4 x 28	1
52	200350	Clamp Lever		1
53	200347	Clamp Disc		1
54	JWSS10-39	Locate Plate		1

Index No.	Part No.	Description	Size	Qty
55	TS1550031	Flat Washer	M5	1
	AB200349	Work Piece Hold Down Assembly (42-56)		1
56	SF059200	Pan Head Bolt w/Flange	M5 x 8	1
57	LM000633	Angle Label		1
	JWSS10-STMGC	Sliding Table Miter Gauge Complete		1
	AH200364	Hardware Kit (not shown)		1



Motor & Trunnion Assembly

Index No.	Part No.	Description	Size	Qty
1	200310	Rear Trunnion Bracket		1
2	TS-1550061	Flat Washer	M8	9
3	TS-1551061	Lock Washer	M8	10
4	TS-1490051	Hex Head Bolt	M8 x 30	4
5	TS-2310162	Hex Nut	M16 x 1.5	2
6	WS160000	Lock Washer	M16	2
7	200306	Rear Trunnion		1
8	200311	Connecting Shaft		1
9	TS-1523031	Set Screw	M6 x 10	2
10	200313	Motor Bracket		1
11	TS-1540061	Hex Nut	M8	4
12	200327	Motor Plate		1
13	200329	Motor Plate Shaft		1
14	200357	Spring Bushing		2
15	TS-1550061	Flat Washer	M8	2
16	SR089400	Countersunk Head Bolt	M8 x 16	2
17	IM290002	Motor Cord	Φ1 Motor	1
	IM290003	Motor Cord	Φ3 Motor	1
18	SC080500	Carriage Bolt	M8 x 25	4
19	MA290002	Motor	1-3/4HP (230/50/1)	1
	MA290003	Motor	2 HP (400/50/3)	1
	MF290011	Motor Fan (not shown)		1
	MF290012	Motor Fan Cover (not shown)		1
	994602AE	Centrifugal Break Assembly (not shown)		1
	CA005020	Running Capacitor (not shown)	25uF, 450VAC	1
	CA030011	Capacitor Cover (not shown)		2
20	200543	Motor Pulley		1
21	TS-1523031	Set Screw	M6 x 10	2
22	KP050540	Key	5 x 5 x 40	1
23	200420	Torsion Spring		1
24	TS-1523031	Set Screw	M6 x 10	1
25	200316	Elevating Worm		1
26	KS030312	Key	3 x 3 x 12	1
27	200069	Fiber Washer		2
28	200366	Eccentric Shaft		1
29	PS052400	Spring Pin	5 x 24	1
30	200367	Bushing		1
31	SS061000	Set Screw	M6 x 50	1
32	TS-1540061	Hex Nut	M8	1
33	SS060600	Set Screw	M6 x 30	1
34	TS-1540041	Hex Nut	M6	1
35	SH060500	Hex Head Bolt	M6 x 25	1
36	200061	Locating Block		1
37	200533	Front Trunnion		1
38	200368	Bracket		1
39	NH162405	Nut	M16 x 1.5	2
40	NH182601	Nut	M18 x 1.5	2
41	200423	Fiber Washer		3
42	200314	Tilt Worm		1
43	PS043000	Spring Pin	4 x 30	2
44	200422	Fiber Washer		1
45	200315	Eccentric Shaft (Long)		1
46	JWSS10-46	Washer		1

Index No.	Part No.	Description	Size	Qty
47	200539	Raising Shaft		1
48	200470	Timing Pulley	36T	1
49	200380	Pressure Block		1
50	SR050200	Hex Socket Bolt	M5 x 10	2
51	200404	Handle		2
52	150045	Knob	M10	2
53	200403	Hand Wheel		2
54	200382	Pointer		1
55	200540	Spacer		1
56	SS059200	Set Screw	M5 x 8	2
57	200312	Front Trunnion Bracket		1
58	200410	Collar		2
59	SS069200	Set Screw	M6 x 8	3
60	TS-1540061	Hex Nut	M8	2
61	TS-1551061	Lock Washer	M8	2
62	TS-1550061	Flat Washer	M8	2
63	200418	Bearing Bracket		1
64	JWSS10-64	Pan Head Bolt	M8 x 20	2
65	TS-2310162	Hex Nut	M16 x 1.5	1
66	SH080800	Hex Head Bolt	M8 x 40	1
67	200371	Timing Pulley	36T	1
68	SS059200	Set Screw	M5 x 8	2
69	TS-2310162	Hex Nut	M16 x 1.5	1
70	TS-1523021	Set Screw	M6 x 8	1
71	PS052400	Spring Pin	5 x 24	2
72	200109	Arbor Bracket Shaft		1
73	200528	Fixed Ring		1
74	WW300383	Wave Space Washer	18 x 32	2
75	VB-270J8	Poly V-Belt	270J8	1
76	TS-1523031	Set Screw	M6 x 10	2
77	200308	Arbor Pulley		1
78	NH162406	Hex Nut	M16 x 1.5	2
79	BB-6203LLU	Ball Bearing	6203LLU	2
80	200529	Arbor Bracket		1
81	KS050530	Key	5 x 5 x 30	1
82	200530	Arbor		1
83	200517	Flange		2
84	NH121900	Nut	M12	1
85	200307	Connecting Shaft		1
86	993105	Timing Belt	384-3GT-10MM	1
87	WF132625	Flat Washer	M13 x 26	1
88	200156	Washer		1
89	SN069300	Countersunk Head Bolt	M6 x 12	1
90	WS05000	Lock Washer	M5	2
91	200482	Pulley Guard		1
92	SC100500	Carriage Bolt	M10 x25	1
93	200503	Spindle Extend Plate		1
94	200504	Moving Plate		1
95	WF102825	Washer	M10x28	1
96	NH101700	Nut	M10	1
97	200532	Fix Plate		1
98	200531	Link		1
99	200505	Fiber Washer		2
100	200511	Stud		2
101	SN049200	Countersunk Head Bolt	M4x8	2

102	NL0610000	Nylon Nut	M6	2
103	200471	Fiber Washer		1
104	TS-1482021	Hex Head Bolt	M6x12	2
105	WS060000	Lock Washer	M6	2
106	709411	Strain Relief	PG-11	1
107	AB200514	Blade Guard Assy		1
108	200506	Splitter		1
109	200513	Lock Knob	M6	1
110	SN069400	Countersunk Head Bolt	M6x16	2
111	NL0810000	Nylon Nut	M8	2
112	709733E	Saw Blade		1
113	200542	Arbor Nut Wrench		1
114	200510	Flange Lock Wrench		1

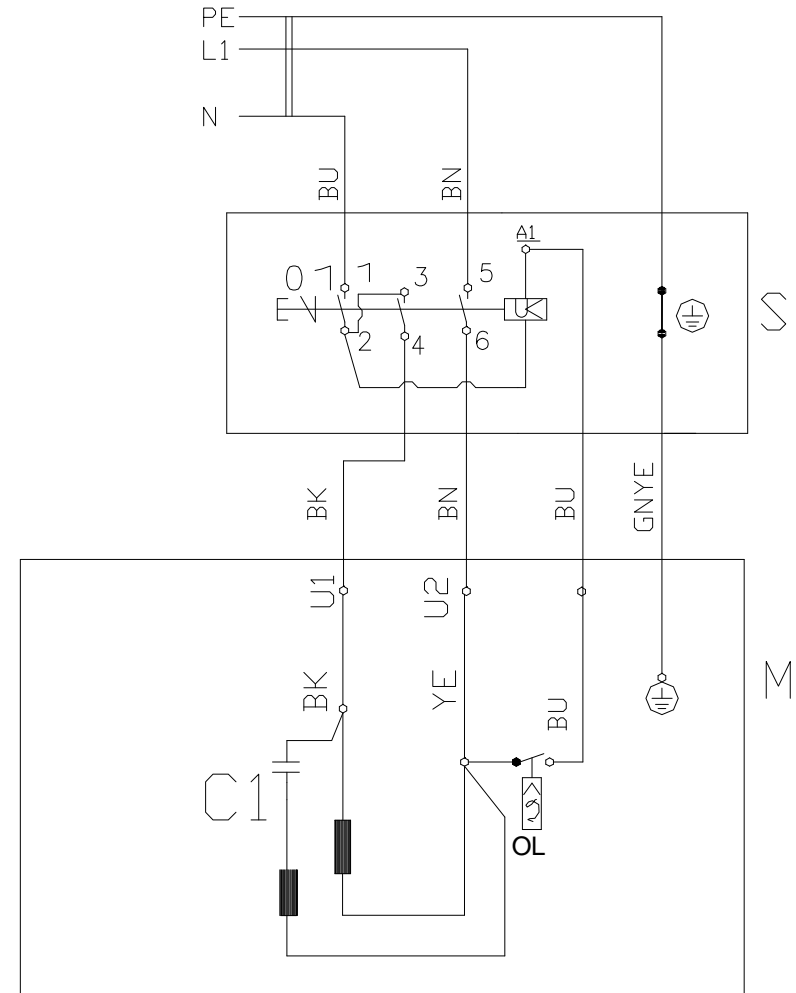
JTS-250 / JTS-250S

708775KM /708777KM

230/50/1

	colour of strands	Litzenfarben	couleur des cordons
BK	black	schwarz	noir
WH	white	weiß	blanc
BU	blue	blau	bleu
YE	yellow	gelb	jaune
RD	red	rot	rouge
BN	brown	braun	brun
GY	grey	grau	gris
GNYE	green-yellow	grün-gelb	vert-jaune
OG	orange	orange	orange
VT	violet	violett	violet

	meaning of symbol	Bedeutung der Zeichen	interprétation
M	motor	Motor	moteur
S	switch	Schalter	interrupteur
C	condenser	Kondensator	condensateur
E	electronic unit	Elektronik Einheit	unité électronique
F	fuse	Sicherung	fusible
RS	reversing switch	Drehrichtungsschalter	commu. droite/gauche
CS	centrifugal switch	Fliehkraftschalter	déclencheur centrifuge
OL	overload cut-off	Überlastschuttschalter	déclencheur surcharge
LS	limit switch	Positionsendschalter	micro



JTS-250 / JTS-250S

708775KT /708777KT

400/50/3

	colour of strands	Litzenfarben	couleur des cordons
BK	black	schwarz	noir
WH	white	weiß	blanc
BU	blue	blau	bleu
YE	yellow	gelb	jaune
RD	red	rot	rouge
BN	brown	braun	brun
GY	grey	grau	gris
GNYE	green-yellow	grün-gelb	vert-jaune
OG	orange	orange	orange
VT	violet	violett	violet

	meaning of symbol	Bedeutung der Zeichen	interprétation
M	motor	Motor	moteur
S	switch	Schalter	interrupteur
C	condenser	Kondensator	condensateur
E	electronic unit	Elektronik Einheit	unité électronique
F	fuse	Sicherung	fusible
RS	reversing switch	Drehrichtungsschalter	commu. droite/gauche
CS	centrifugal switch	Fliehkraftschalter	déclencheur centrifuge
OL	overload cut-off	Überlastschuttschalter	déclencheur surcharge
LS	limit switch	Positionsendschalter	micro

