

# **J E T**

**SBR-30N** **Combination Shear, Brake**  
**SBR-40N** **and Roll**

**SBR-30N ....754031**

**SBR-40N ....754041**

**PARTS LIST**  
**ERSATZTEILLISTE**  
**LISTE DE PIECES**

**WMH Tool Group AG**

Bahnstrasse 24, CH – 8603 Schwerzenbach  
[www.wmhtoolgroup.ch](http://www.wmhtoolgroup.ch); [info@wmhtoolgroup.ch](mailto:info@wmhtoolgroup.ch)

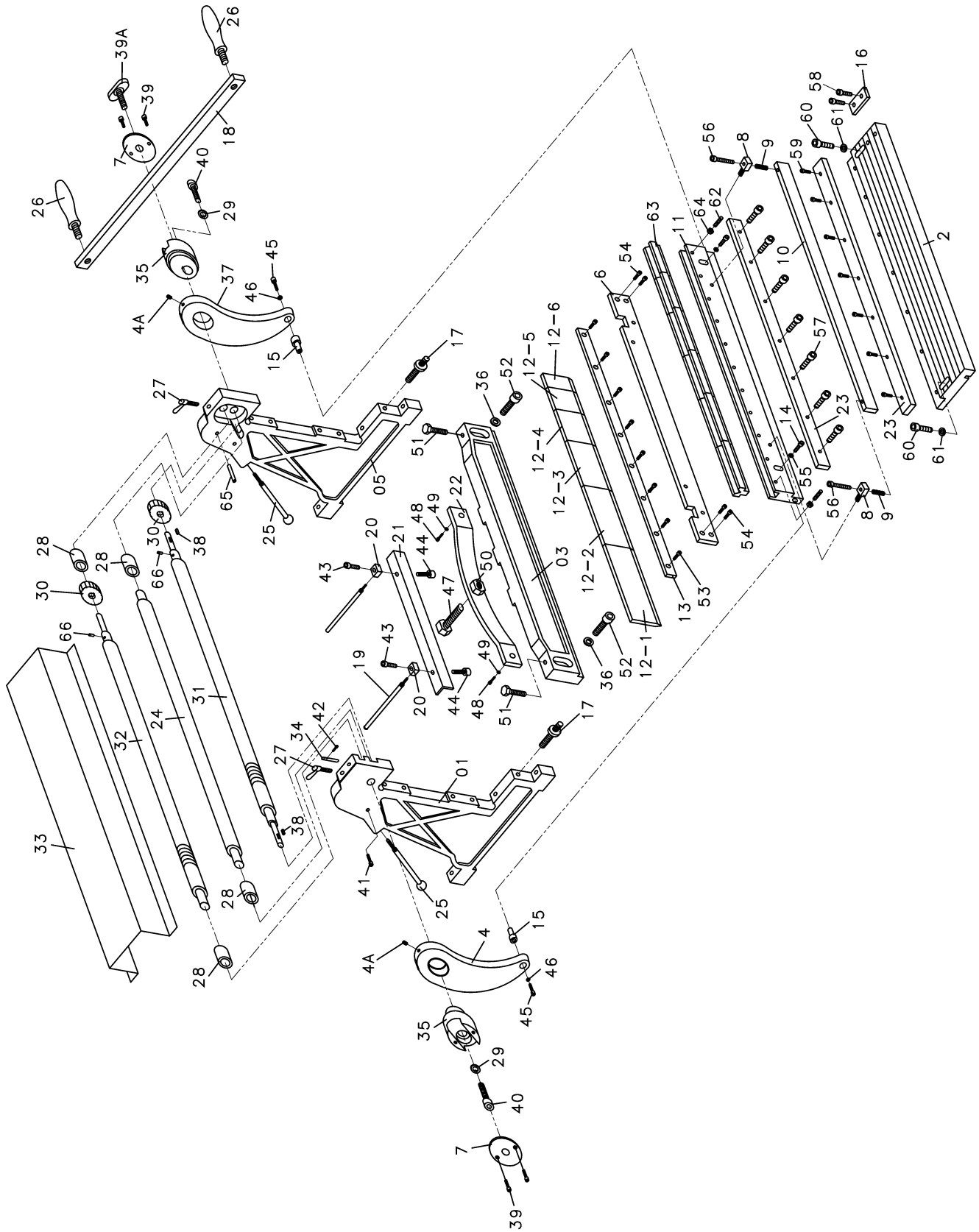
Tel +41 (0) 44 806 47 48

Fax +41 (0) 44 806 47 58

P-754031/ 754041 02/06



# Breakdown For The SBR-30N Shear, Brake, and Roll



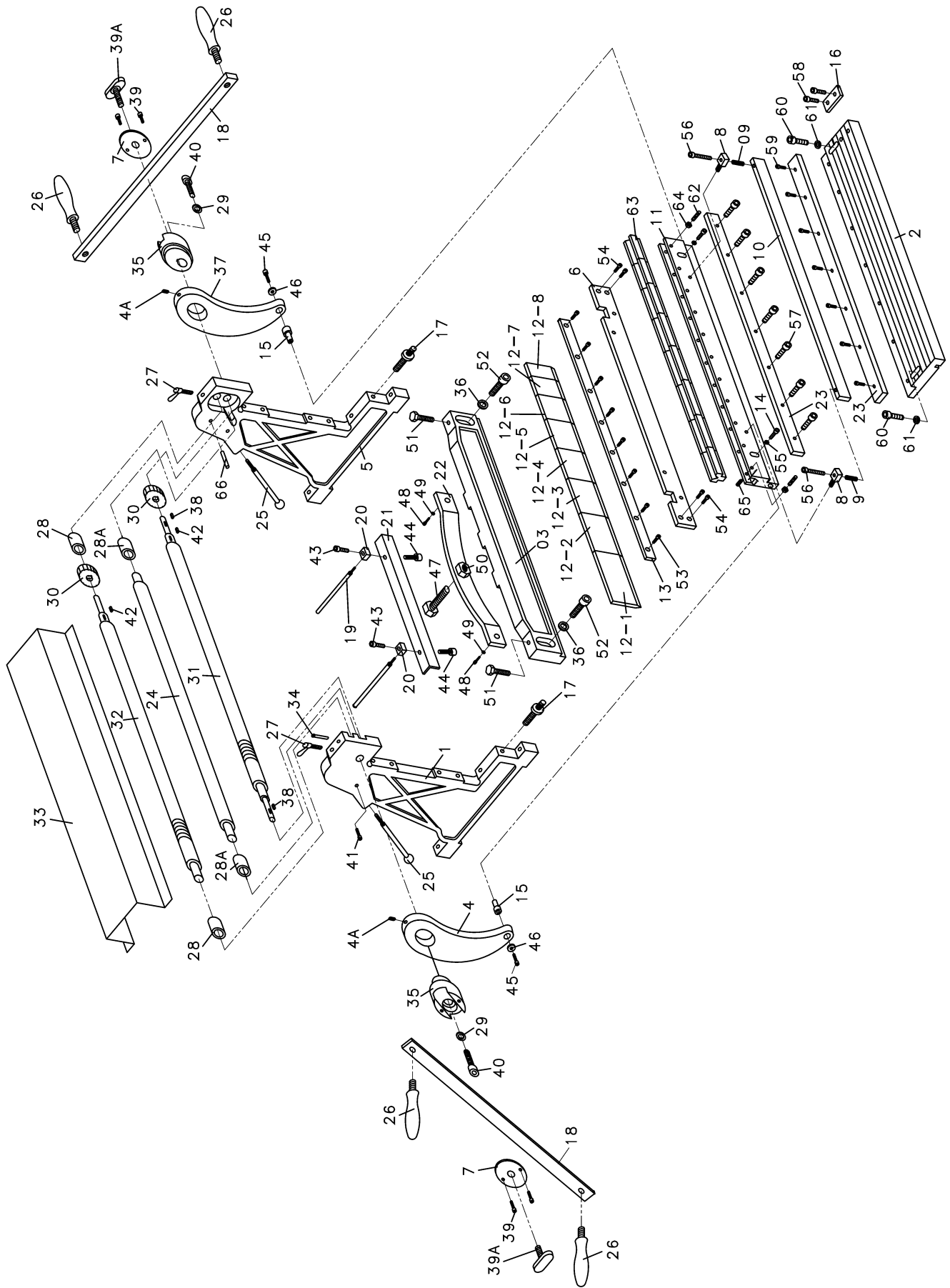
## Parts List For The SBR-30N Shear, Brake, and Roll

Index No.	Part No.	Description	Size	Qty.
1	SBR30N-1	Frame (left)		1
2	SBR30N-2	Table		1
3	SBR30N-3	Cross Beam		1
4	SBR30N-4N	Arm (left)		1
4A	SBR30N-4A	Zerk Fitting		2
5	SBR30N-5	Frame (right)		1
6	SBR30N-6	Spacer Bar		1
7	SBR30N-7	Cover		2
8	SBR30N-8	Pressure Plate Bracket		2
9	SBR30N-9	Spring		2
10	SBR30N-10	Press Plate		1
11	SBR30N-11	Cutter Plate		1
12-1	SBR30N-12-1	Brake Forming Die	10"	1
12-2	SBR30N-12-2	Brake Forming Die	8"	1
12-3	SBR30N-12-3	Brake Forming Die	6"	1
12-4	SBR30N-12-4	Brake Forming Die	3"	1
12-5	SBR30N-12-5	Brake Forming Die	2"	1
12-6	SBR30N-12-6	Brake Forming Die	1"	1
13	SBR30N-13	Press Plate		1
14	TS-1491081	Hex Cap Bolt	M10x50	2
15	SBR30N-15	Pivot Bushing		2
16	SBR30N-16	Block		1
17	SBR30N-17	Adjustable Bolt		2
18	SBR30N-18	Handle Bar		1
19	SBR30N-19	Guide Rod		2
20	SBR30N-20	Guide Block		2
21	SBR30N-21	Guide Plate		1
22	SBR30N-22	Guide Bar		1
23	SBR30N-23	Cutter		2
24	SBR30N-24	Roll		1
25	SBR30N-25	Screw		2
26	SBR30N-26	Handle		2
27	SBR30N-27	Adjustable Bolt		2
28	SBR30N-28	Bushing		4
29	SBR30N-29	Cover		2
30	SBR30N-30	Gear		2
31	SBR30N-31	Lower Pressing Roll		1
32	SBR30N-32	Upper Pressing Roll		1
33	SBR30N-33	Cover		1
34	SBR30N-34	Shaft		1
35	SBR30N-35	Eccentric Shaft		2
36	SBR30N-36N	Washer		2
37	SBR30N-37N	Arm (right)		1
38	SBR30N-38	Key		2
39	TS-1503041	Hex Socket Cap Screw	M6x16	4
39A	SBR30N-39N	Lock Bolt		1
40	TS-1503021	Hex Socket Cap Screw	M6x10	2
41	TS-1503091	Hex Socket Cap Screw	M6x40	2
42	TS-1503031	Hex Socket Cap Screw	M6x12	1

## Parts List For The SBR-30N Shear, Brake, and Roll

Index No.	Part No.	Description	Size	Qty.
43	SBR30N-43	Thumb Screw ???		2
44	TS-1503021	Hex Socket Cap Screw	M6x10	2
45	TS-1505061	Hex Socket Cap Screw	M10x40	2
46	SBR30N-46N	Washer	10.5	2
47	TS-1492051	Hex Cap Bolt	M12x50	1
48	TS-1505021	Hex Socket Cap Screw	M10x20	2
49	SBR30N-46N	Washer	10.5	2
50	SBR30N-50	Adjustable Nut	M12	1
51	TS-1492041	Hex Cap Bolt	M12x40	2
52	TS-1505051	Hex Socket Cap Screw	M10x35	2
53	TS-1504051	Hex Socket Cap Screw	M8x25	9
54	TS-1505031	Hex Socket Cap Screw	M10x25	4
55	SBR30N-46N	Washer	10.5	2
56	SBR30N-56	Hex Socket Cap Screw	M8x90	2
57	TS-1503021	Hex Socket Cap Screw	M6x10	7
58	TS-1503031	Hex Socket Cap Screw	M6x12	2
59	TS-1503031	Hex Socket Cap Screw	M6x12	7
60	TS-1505031	Hex Socket Cap Screw	M10x25	2
61	SBR30N-61	Washer	10.5	2
62	TS-1522031	Socket Set Screw	M5x10	20
63	SBR30N-63	V-Block		5
64	TS-1540031	Hex Nut	M5	20
65 shown on the breakdown but not in part list				.....
66 shown on the breakdown but not in part list				.....

# Breakdown For The SBR-40N Shear, Brake, and Roll



## Parts List For The SBR-40N Shear, Brake, and Roll

Index No.	Part No.	Description	Size	Qty.
1	SBR40N-1	Frame (left)		1
2	SBR40N-2	Table		1
3	SBR40N-3	Cross Beam		1
4	SBR40N-4	Arm (right)		1
4A	SBR40N-4A	Zerk Fitting		2
5	SBR40N-5	Frame (right)		1
6	SBR40N-6	Spacer Bar		1
7	SBR40N-7	Cover		2
8	SBR40N-8	Pressure Plate Bracket		2
9	SBR40N-9	Spring		2
10	SBR40N-10	Press Plate		1
11	SBR40N-11	Cutter Plate		1
12-1	SBR40N-12-1	Brake Forming Die	15"	1
12-2	SBR40N-12-2	Brake Forming Die	10"	1
12-3	SBR40N-12-3	Brake Forming Die	7"	1
12-4	SBR40N-12-4	Brake Forming Die	4"	1
12-5	SBR40N-12-5	Brake Forming Die	2-1/2"	1
12-6	SBR40N-12-6	Brake Forming Die	2"	1
12-7	SBR40N-12-7	Brake Forming Die	1-1/2"	1
12-8	SBR40N-12-8	Brake Forming Die	1"	1
13	SBR40N-13	Press Plate		1
14	TS-1506061	Hex Socket Cap Screw	M12x45	2
15	SBR40N-15	Pivot Bushing		2
16	SBR40N-16	Stop Block		1
17	SBR40N-17	Adjustable Bolt		2
18	SBR40N-18	Handle Bar		2
19	SBR40N-19	Guide Rod		2
20	SBR40N-20	Guide Block		2
21	SBR40N-21	Guide Plate		1
22	SBR40N-22	Support Plate		1
23	SBR40N-23	Cutter		2
24	SBR40N-24	Roll		1
25	SBR40N-25N	Screw w/Knob		2
26	SBR40N-26	Handle		4
27	SBR40N-27	Adjustable Bolt		2
28	SBR40N-28	Bushing		2
28A	SBR40N-28A	Bushing		2
29	SBR40N-29	Cover		2
30	SBR40N-30N	Gear		2
31	SBR40N-31	Lower Pressing Roll		1
32	SBR40N-32	Upper Pressing Roll		1
33	SBR40N-33	Cover		1
34	SBR40N-34	Lock Shaft		1
35	SBR40N-35	Eccentric Shaft		2
36	SBR40N-36	Bushing		2
37	SBR40N-37N	Arm (right)		1
38	SBR40N-38N	Key		2
39	TS-1503041	Hex Socket Cap Screw	M6x16	4
39A	SBR40N-39N	Lock Bolt		2

## Parts List For The SBR-40N Shear, Brake, and Roll

Index No.	Part No.	Description	Size	Qty.
40	TS-1503041	Hex Socket Cap Screw	M6x16	2
41	SBR40N-41N	Set Screw		2
42	SBR40N-42N	Key		1
43	TS-1506021	Hex Socket Cap Screw	M12x25	2
44	TS-1506021	Hex Socket Cap Screw	M12x16	2
45	TS-1506111	Hex Socket Cap Screw	M12x70	2
46	SBR40N-46N	Washer	M12	2
47	SBR40N-47N	Hex Cap Bolt	M16x100	1
48	SBR40N-48N	Hex Cap Bolt	M16x30	2
49	SBR40N-49N	Washer	M16	2
50	SBR40N-50N	Adjustable Nut	M16	1
51	TS-1492021	Hex Cap Screw	M12x30	2
52	SBR40N-52N	Hex Socket Cap Screw	M16x55	2
53	TS-1503061	Hex Socket Cap Screw	M6x25	13
54	SBR40N-54N	Hex Socket Cap Screw	M16x35	4
55	SBR40N-55N	Washer	M12	2
56	TS-1506131	Hex Socket Cap Screw	M12x75	2
57	TS-1503041	Hex Socket Cap Screw	M6x16	6
58	TS-1503041	Hex Socket Cap Screw	M6x16	2
59	TS-1503041	Hex Socket Cap Screw	M6x16	6
60	SBR40N-60N	Hex Socket Cap Screw	M16x35	2
61	SBR40N-61N	Washer	M16	2
62	TS-1522041	Hex Socket Screw	M5x12	14
63	SBR40N-63N	V-Block		7
64	TS-1540031	Hex Nut	M5	14
65				
66				